

THE SITZMARKE

SPACE CITY SKI CLUB

HOUSTON, TEXAS

VOLUME 2

APRIL 1970

NUMBER 11

NOMINATED CANDIDATES FOR 1970 - 1971

	<u>Comm. Nominations</u>	<u>Floor Nominations</u>
President:	Jerry Maley	George English
VP-Programs:	Scott Granlund	
VP-Trips:	Ron Rambin	Ed Bogdan
VP-Membership:	Barbara Nix	Leslie Holmes
Secretary:	Mary Beth Jackson	
Treasurer:	Darwin Miller	
PR Director:	Margie Fanette	

CANDIDATES FOR PRESIDENT



JERRY MALEY

Jerry, one of the Club founders, served on the Executive Committee as Treasurer ('67-'68), and as Club Auditor from 1965 to 1967. In 1969 he chaired both the Bylaws Revision Committee and the 1969 Nominating Committee. Jerry has participated in numerous Club trips and was Trip Chairman of the Aspen trip last February. He is employed as Financial and Administrative Assistant to Dr. Denton Cooley and is Treasurer of the Heart Institute.



GEORGE ENGLISH

George has been a member for four years and has been on two trips with the Club. He was Trip Chairman for the February 1970 Ruidoso Trip (cancelled), and has averaged about two full weeks of skiing per year since 1966. George is employed by NASA's Operations Analysis Branch as a Program Analyst. George has skied in Europe, Aspen, Ruidoso, Portillo, Chile, and Crested Butte, Colorado.

Regular Monthly Meeting

MONDAY

April 13, 1970

LOOK'S SIR-LOIN INN

"CROWN ROOM"

(Corner of the South Loop West and South Main)

Gentlemen are requested to wear coats.

The Election Meeting of the SCSC will begin at 8:30 pm on Monday, April 13. There will be social hour before the meeting beginning at 7:30 pm, where members will have an opportunity to talk with the candidates.

Ballots will be given to each dues paid member as he or she enters the meeting and checks in at the membership table. Absentee Ballots must be received by mail before the meeting if they are to be counted.

At 8:30pm the candidates will be introduced to the membership. No new nominations may be offered from the floor at this time. Each candidate will have eight minutes (total maximum time) in which to present his platform and have other club members speak for him. Balloting will follow. While an election committee is counting the ballots, members and guests will be able to enjoy a social-ski story swapping hour. Results will be announced before the meeting adjourns.

FROM THE HEAD OF THE LIFT LINE...

The end of another year for SCSC approaches, and the April election of officers is right around the corner. The job of a Club officer is no small undertaking. Our membership now totals 865, and SCSC has attained a measure of prominence both in our own community and on the national ski scene. The direction the Club takes during the next year will be determined largely by its leadership. Therefore, I urge you to attend the April 13 meeting and vote for the candidates of your choice. If you cannot attend, MAIL IN your absentee ballot so that it will be received prior to the meeting.

At the risk of seeming repetitious, I again remind you: we want to preserve some of those moments from the past year--the trips, the skating parties, the summer activities, the ski school--in the Club Scrapbook for SCSC members to enjoy in the future. So keep those photos and snapshots comin' in!! You can give them to our historian, Charlene Cotton, to your trip chairman, to me, or to any of the other officers. Be sure to identify the trip or activity on the back of each photo.

The Treasurer, Jay Elston, will close the 1969-70 books on April 30. When all the bills are in, a financial statement for SCSC will be published, probably with the June issue of The Sitzmarke.

Ron Crossman
SCSC President



Tony Bell receives a little moral support before the races.

LAKE TAHOE TRIP REPORT

The only way to describe the Lake Tahoe trip is fantastic! There was never a dull moment from the time we got to the airport until we got back! Our charter flight on ClubAmerica was cancelled at the last moment, and we wound up flying by commercial airlines to Reno.

The skiing conditions were excellent. We got about eight inches of fresh snow early in the week. Later in the week

we had clear skies and 60 degree weather.

Two great wine and cheese parties were held on the slopes. Club races were held on Friday afternoon at Heavenly Valley. Jim Porter skied the course like a pro. NASTAR, the people who directed the race, presented Jim with a silver metal. Tony Bell won a bronze metal. Marty Sanford, wearing No. 13, had the best time among the women racing.

Our side trip to Reno went off quite well. A full bus load of skiers took the opportunity to see the Frank Gorshin show at Harold's Club and to explore the casinos in the Reno area.

For those people who have not skied in the Lake Tahoe area, I would like to encourage you to take the trip next year. It's really a great place for an all around vacation -- excellent skiing in the daytime and then gambling and top name performers at night.

Ron Rambin, Trip Chairman

**** THE SITZMARKE ****

published monthly by
the space city ski club
houston, texas

EXECUTIVE COMMITTEE

<u>RON CROSSMAN</u>	621-2190
President	
<u>WAYNE RENTFRO</u>	468-4993
V. P. - Trips	
<u>HARRY BRISTOL</u>	622-4786
V. P. - Programs	
<u>MARJEAN CHRISMAN</u>	668-2739
V. P. - Membership	
<u>JAY ELSTON</u>	465-7240
Treasurer	
<u>ELIZA JANE ADAMS</u>	771-3116
Secretary	
<u>MARTHA SANFORD</u>	523-9626
P. R. Director	

CANDIDATES FOR TRIP VICE PRESIDENT



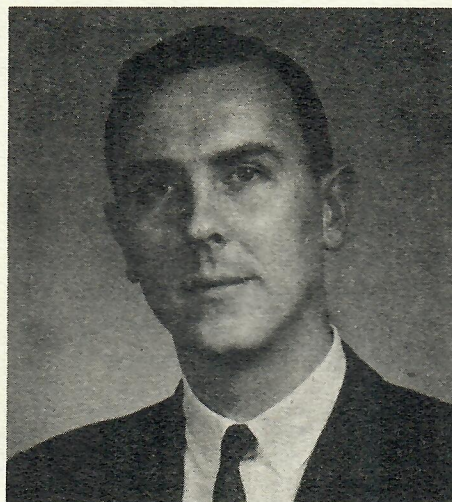
Ron Rambin



Ed Bogdan



Mary Beth Jackson



Scott Granlund



Darwin Miller



Margie Fanette

ED BOGDAN:

Ed, a three year member of SCSC, has made four trips with the Club. He arranged a ski trip to Taos, N.M. over the 1970 New Year's holiday for 12 ski club members(Avg. cost for one week trip-\$135. inclusive). Ed is a Computer Consulting-Technical Rep. for Kinotrol, Inc.

RON RAMBIN:

Ron, who has been a member for four years, has made six trips with the Club and served as Trip Chairman of the last trip to Lake Tahoe. He is a graduate of Texas A&M and holds a Masters from Rice U. He is a Chemical Engineer employed by Petro-Tex Chemical Co.

SCOTT GRANLUND:

Scott, an avid skier, has been on seven trips in the last three years., and has been a member for five years. He is a Chemical Engineer employed as a Market Research Analyst for Jefferson Chemical Co.

DARWIN MILLER

In the four years they have been members Darwin and his wife Sandy have accompanied the Club on six trips. Darwin was Trip Chairman of the Santa Fe Trip this season and helped produce the summer picnic last year. He is employed as a Systems Analyst for TRW at NASA.

MARGIE FANETTE

A member for four years, Margie has worked at the tables at Club meetings and has participated in four trips to the slopes. She is Secretary to the Manager of Dempsey - Tegeler in Houston and holds a Broker's license.



SPACE CITY SKI CLUB

P. O. Box 22567
Houston, Texas 77027

BULK RATE
U.S. Postage
PAID
Houston, Texas
Permit No. 9036

CORRECTED ADDRESS REQUESTED

Page 4

THE SITZMARKE

April, 1970

CALENDAR OF EVENTS

April

April 13 Monthly Meeting
Election Mtg.

May

May 11 Monthly Meeting

SUPPORT THE US SKI TEAM

USSA (United States Ski Association), in connection with FIS (Federation of International Skiing), is offering pins for sale to help support the US Ski Team. These attractive pins will be on sale at the April and May meetings for \$1.00. Buy one and support your US Ski Team.

FOR SALE:

Henke Buckle Boots, size 11 1/2
Purchased last year for \$45.
Worn for four days. Asking \$30.
Call Gene Holland: (office) 224-8381.

* * * * *

Fischer Combi Skis / 205 cm /
Nevada Toe, Tyrol heel / good
condition / Call Ed Bogdan :
day- 944-0500, night-621-3812.

CANDIDATES FOR MEMBERSHIP VICE PRESIDENT

BARBARA NIX:

A six year member who handled the Club's first successful Style Show, Barbara has been a member for six years and has made several trips with the Club. She is an Executive Secretary at Humble Oil where she has also served as an officer of the Humble Club.

(Photos not available for these two lovely ladies. See them at the meeting!)

LESLIE HOLMES

Leslie has been a member for two years and has worked on Club tables at meetings. She has been on one trip with SCSC in the past 12 month and on three independent trips. Leslie is a former active member of the Tulsa Ski Club and the Okla. City Ski Club. She is employed by New England Nuclear as a Technical Representative.

SKI HEADQUARTERS



... in the clothes hamper

Bogner	Meister	Gerry
Head	Sportcaster	Braun
Spinnerin	Edelwis	Duofold
Maggi	Skyr	Select Furs

... from the ski rack

Head	Rossignol
Hart	Fischer

... in the boot shop

Lange	Henke
Rosemount	Koflach
Raichle	

J. RICH SPORTS Ltd.

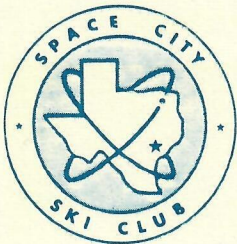
2367 Rice Blvd.

JA 9-8767

Rentals:

Skiis, Boots, Pole,
Pants and Parkas

Charge accounts invited



TRIP CRITIQUE

P. O. BOX 22567, HOUSTON, TEXAS 77027

The following form is to aid in evaluating trips of the present season and to help next year's Executive Committee in their scheduling and planning of future trips. Please be completely frank in all of your answers (don't let snow conditions bias your answering,) but PLEASE take the time to complete this form and mail it to:

SPACE CITY SKI CLUB
P.O. Box 22567
Houston, Texas 77027
Attention: V.P. Trips

TRIP _____ DATE _____ TRIP CHAIRMAN _____

Overall reaction to trip: ___ Great ___ Very Good ___ Good ___ Fair ___ Poor
Transportation: ___ Great ___ Very Good ___ Good ___ Fair ___ Poor
Lodging: ___ Great ___ Very Good ___ Good ___ Fair ___ Poor
Daily transportation: ___ Great ___ Very Good ___ Good ___ Fair ___ Poor
Club-sponsored parties: ___ Great ___ O.K. ___ None ___ Poor
Trip Chairman: ___ Great ___ Very Good ___ Good ___ Fair ___ Poor
Facilities & location: ___ Great ___ Very Good ___ Good ___ Fair ___ Poor
Should we go again? ___ Yes ___ No

Changes: _____

SUMMER EVENTS

No-Snow Preaknes: ___ Yes ___ No
Bar-B-Que: ___ Yes ___ No
Weekend in Lorado: ___ Yes ___ No
Deep Sea Fishing: ___ Yes ___ No

SUGGESTIONS: _____

