

# THE SITZMARKE



SPACE CITY SKI CLUB

HOUSTON, TEXAS

VOLUME 4

DECEMBER 1971

NUMBER 8

REGULAR MONTHLY MEETING  
MONDAY 7:30 P.M.  
DECEMBER 13, 1971

LOOK'S SIR-LOIN INN  
"CROWN ROOM"

(Corner of the South Loop West  
and South Main)

We have a great program lined up for December. A representative of Taos Ski Valley will be here to tell us about Taos and show an excellent movie about the area. Taos has a magical sound to it when it comes to skiing. For years the area was considered the serious skiers dream, for experts only. This is no longer true!

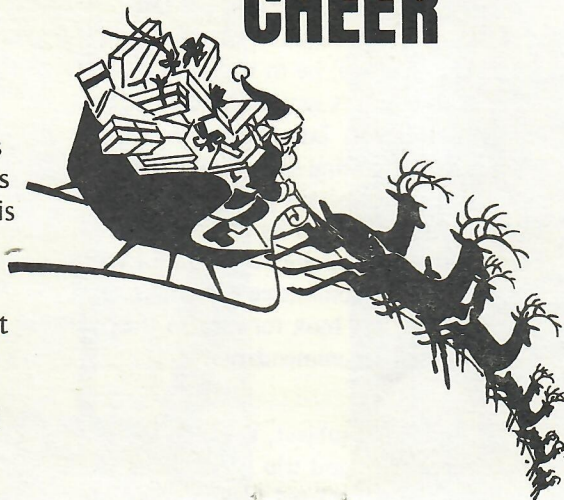
While there still are the best expert runs in the country, the area has considerable facilities for the beginner and intermediate. This will be an excellent chance for you to learn first hand about the area. I don't know of any ski area in the country that can duplicate the charm of Taos. Come see the program and you will understand why.

The November meeting was quite successful. Personal thanks go to *Roxanne McKenzie*, *Ingrid Rich* and *Jay Castille* for making the show a success. Special thanks to *Miles Anderson* and *Gil McKenzie* for all their help. And of course, our chorus, models, and cue card girls were all outstanding. Special mention to *Howard Young* who sang a beautiful solo. The annual Style Show had 603 Space City members in attendance. Plan to attend the December meeting. You

should find it both informative and enjoyable.

Ed Williams  
Vice President-Programs

## CHRISTMAS CHEER



### — NEW REFUND POLICY —

The Executive Committee has approved a minimum \$5.00 refund charge to become effective January 15, 1972. If you drop off a trip prior to January 15th and you are eligible for a refund, you will receive a full refund. Trip participants eligible for refunds will be assessed a \$5.00 refund charge after January 15th. To be eligible for a refund, you must have someone available to replace you on a trip. Participants dropping off a trip who are not eligible for a refund can lose their entire payment.

D. R. Sebesta  
Treasurer

For further clarification of this policy, see the President's column!

### LOVE IS LASTING

Poetry by John Boynton  
One of our SCSC members.

SENSITIVE — INSPIRING

Available at Brown's, Cobblers  
and others

An unforgettable Xmas Gift!

### SPECIAL EVENT

FLASH !!! *B Dalton*, Bookseller in the Northwest Mall is giving a champagne autograph party for John Boynton, Thursday, December 9, from 7:00 to 9:00 p.m., and all SCSC members are invited to share in the fun.

### THE CLUB'S RESIDENT POET

You will all remember the ski club's poet laureate, John Boynton, who did a hilarious takeoff on Henry Gibson in last spring's Variety Show. Well, he is now a published author with his collection of poems, *Love is Lasting*, in the book stores. The poems are very personal, very sensitive, and somewhat along the Rod McKuen style. I have gone back and read many of the poems a second time because they are so beautiful. John has a great writing talent and his book should really sell. *Love is Lasting* is the kind of thought provoking verse that ski people would definitely relate to and enjoy. Although soft bound, the book is very attractive and has his own sketch on the cover - a great Christmas gift for ski bunnies and racers alike. Go by a bookstore and see it. I think you will be as impressed as I am.

Iris Eaton



## \* \* THE SITZMARKE \* \*

Published monthly by the  
SPACE CITY SKI CLUB

Address all correspondence to:  
Space City Ski Club, P. O. Box 22567,  
Houston, Texas 77027

.....

### SPACE CITY SKI CLUB 1971-1972 OFFICERS

JERRY CHILES . . . 626-2697  
President

PAT McLAUGHLAN . . 649-6296  
Vice President - Trips

ED WILLIAMS . . . 433-7359  
Vice President - Programs

JOYCE TESTA . . . 626-2674  
Vice President - Membership

DAN SEBESTA . . . 944-0873  
Treasurer

VIRGINIA BLALOCK . 781-1778  
Secretary

TANNY KOEPEL . . 626-2081  
Public Relations Director

.....

### EXECUTIVE BOARD MEMBERS

<i>Miles Anderson</i>	<i>Mary Beth Jackson</i>
<i>Rolf Beaudry</i>	<i>Jerry Maley</i>
<i>Tom Cronin</i>	<i>Darwin Miller</i>
<i>Ron Crossman</i>	<i>Barbara Nix</i>
<i>Margie Fanette</i>	<i>Ron Rambin</i>
<i>Scott Granlund</i>	<i>Bill Wright</i>

.....

### COMMITTEE CHAIRMEN

Advertising . . . .	Gene Holland	667-0190
Audit. . . . .	Bill Bates	626-1486
Drink Tickets . . . .	Billie Shadid	622-5130
Guests . . . . .	Claudette DeNal	622-8673
Lift Liners . . . . .	Susan McCotter	667-5707
Mem. Verification . .	Chrysta Sykes	622-9897
New Members . . . .	Laura Campion	626-2700
Pins, Patches, Decals .	Pat Dodds	649-2218
Swap Shop . . . . .	Fran Stephenson	668-5805

### FROM THE HEAD OF THE LIFT LINE . . .

I am pleased to report that we had a very good response to our call for volunteers last month to serve on the newly formed Audit Committee. Many members with accounting backgrounds offered to serve, and we want to express our appreciation to all of you who volunteered.

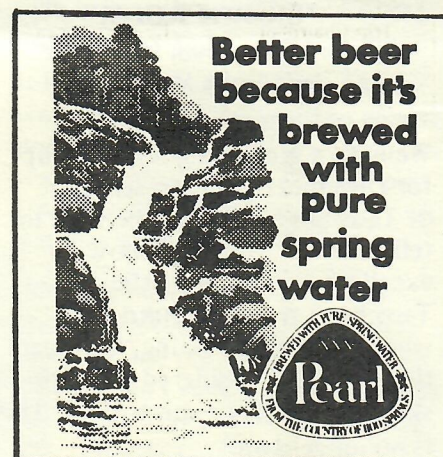
Bill Bates, a manager with the Accounting firm of Arthur Anderson & Company, has agreed to serve as Chairman of this committee. Bill is in the administrative services division of Arthur Anderson and will contribute much valuable experience in the accounting systems and procedures area to this job. He has formed his committee and is in the process now of reviewing the financial records and procedures of our club. As reported in the last Sitzmark, the function of the Audit Committee will be to review and audit the prior year's records, and to work with Treasurer Dan Sebesta, in setting up an accounting system which will contain the necessary controls and procedures needed by a club of our size. Again, we are very grateful to Bill and his committee for taking on this task, and look forward to their reports and recommendations.

On a related subject, the increased volume of trips and trip participants this year with its related large number of cancellations and transfers has caused an undue amount of extra work on the part of the Treasurer and Trip Chairmen in keeping up with all the necessary refunds. To help alleviate this situation, and defray the costs involved in processing, the Executive Committee voted at its last meeting to assess a \$5.00 service charge for any cancellation not due to actions of the club. This rule will not become effective until January 15, 1972, meaning that if you are currently signed up on a trip and cancel before the trip's payment deadline and before January 15, you will not have to pay any penalty. However, any trip participant who cancels after January 15, will have to forfeit the \$5.00 service charge, even though he has cancelled before the trip payment deadline. (Of course,

participants who cancel after the trip deadline may still be subject to the loss of their full deposit if they are not replaced by someone on the waiting list.)

Hats off to Ed Williams and his special events staff for the successful production of the "fabulous" *Annual Space City Ski Club Style Show!* It produced the largest attendance of any meeting in our history - over 600 members and guests!! The show was superb as usual, and again displayed the unusual talents of our members (and the shapeliness of our ski bunnies)!

JERRY CHILES  
President



### — CALENDAR —

#### DECEMBER

<i>Monthly Meeting</i>	13th
<i>Aspen Trip</i>	26-2*

#### JANUARY

<i>Monthly Meeting</i>	10th
<i>Steamboat Springs</i>	14-19
<i>Aspen Trip</i>	29-6*

#### FEBRUARY

<i>Monthly Meeting</i>	14th
<i>Europe Trip</i>	17-28*

#### MARCH

<i>Monthly Meeting</i>	13th
<i>March Musical</i>	
<i>Taos Trip</i>	3-7
<i>Tahoe Trip</i>	11-18
<i>Vail Trip</i>	28-3

#### APRIL

<i>Monthly Meeting</i>	10th
------------------------	------

#### MAY

<i>Monthly Meeting</i>	8th
------------------------	-----

\*Must be a dues paid member 6 months prior to these trips. A deposit of \$50 is required on ALL TRIPS at the time of signing up.



## SPACE CITY SKI CLUB 1971-1972 TRIP CHAIRMEN

### DECEMBER 16 - JANUARY 2 / ASPEN

Trip Chairman Bill Russell  
665-2892  
Asst. Trip Chairman Pat Roberts  
782-5263

### JANUARY 14-19 / STEAMBOAT SPRINGS

Trip Chairman Jim Coyle  
782-6549  
Asst. Trip Chairman Merrie Merritt  
528-3981

### JANUARY 29 - FEBRUARY 6 / ASPEN

Trip Chairman Duke Walker  
524-7387  
Asst. Trip Chairman Ed Fedak  
622-8139

### FEBRUARY 17-28 / EUROPE

Trip Chairman Ron Crossman  
681-1998  
Asst. Trip Chairman Willi Schaufelbuhl  
623-8465

### MARCH 3 - 7 / TAOS

Trip Chairman John Gonnerman  
729-6014  
Asst. Trip Chairman Jim Lilyquist  
921-4054

### MARCH 11-18 / TAHOE

Trip Chairman Jim McIntyre  
782-8991  
Asst. Trip Chairman Margie Fanette  
623-2226

### MARCH 28 - APRIL 3 / VAIL

Trip Chairman, Group A Marty Sanford  
785-8589  
Trip Chairman, Group B Jim Grassman  
498-3228

## ASPEN AT CHRISTMAS

The Aspen-at-Christmas group meets on December 5 for a pre-trip party. It's a casual dress affair at the Holiday Inn at 3131 West Loop. The time is 7:30 p.m. in Post Oak Room A. Drinks will be \$1.15.

The group departs from an American Airlines gate at Houston International Airport at 10:00 p.m. on Sunday, December 26 to finish 1971 in the high country. The flight out is on a Western Airlines charter Boeing 730 airplane that is for members only.

Lodging in Aspen is at the base of Buttermilk Mountain in the Holiday Inn.

Parties at Aspen include an arrival party on December 27th, a wine and cheese party at Aspen Highlands on December 29th, and a New Year's Eve party. The time of year is right. The crowd certainly is.

Physical fitness will be mentioned only once. This is it. Be ready!

Questions? Call:

Bill Russell,  
665-2892 / 521-4100

or

Pat Roberts  
782-5263.

Monday, December 13, the date of the next meeting, so submit your check to maintain your place.

All trip participants are urged to attend the pre-trip party at Rudi's (1728 So. Post Oak, Houston) Friday, January 7 at 8:00 p.m. to meet other trip members, arrange room and apartment mates, discuss trip details, and just generally convive.

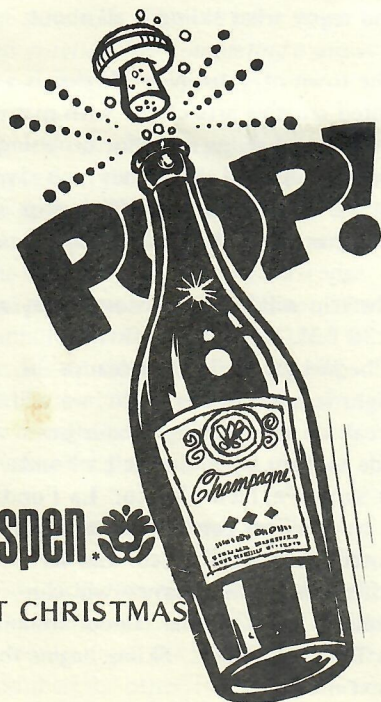
Our departure from Houston is scheduled for approximately 5:00 p.m. Friday, January 14 with an approximate 11:00 p.m. arrival at STEAMBOAT. On Wednesday, January 19, an approximate 2:00 P.M. STEAMBOAT departure will permit an early evening jet flight to Houston. A detailed trip information sheet should reach all trip participants about the same time as this issue of the SITZMARKE.

Questions? Call:

Jim Coyle  
2238 S. Piney Point Rd., No. 207  
Houston, Texas 77042  
Bus. 220-5636 / Res. 782-6549

or

Merrie Merritt, Assistant Trip  
Chairman  
Ph. 528-3981



AT CHRISTMAS

## Steamboat STEAMBOAT SPRINGS COLORADO

SCSC's first trip to STEAMBOAT has been expanded to a group of 44, with several additional members on standby. However, as a result of the exigencies of our accommodations and general club policy (4 persons/condominium and the practice of single female-single male separatism), the wait list for single women is particularly short. So, gals . . .

The final trip payment due date is also approaching. The \$160 total cost (\$110 balance) is due not later than

# AIR FRANCE

le bon voyage

SKI EUROPE

FIVE FABULOUS NON-STOP

A WEEK

HOUSTON-EUROPE

THE ONLY WAY TO GO



# Ski Europe

## EXCITEMENT EUROPE '72

### CHAMONIX - GENEVA - PARIS February 17-28

Full payment of the balance (\$328.00) of the \$383 trip cost is due not later than December 20. Be sure to get your check in to hold your place on this exciting ski adventure. It will be greatly appreciated if as many trip participants as can will pay their balance due by the December 13th ski club meeting . . . either by mail or at the meeting.

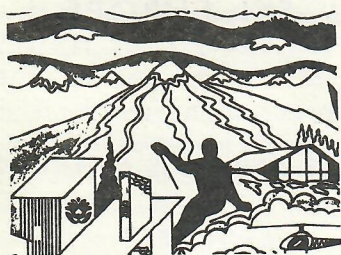
**REMINDER:** Any participant who has not signed and returned the Trip Release Form please do so now. It is a requirement of Space City Ski Club that anyone going on this or any other Club trip must have signed this form.

**FLASH!!!** The Public Health Service recently announced that Smallpox vaccinations are no longer required for travel to Europe.

The Europe Trip is presently full with a substantial waiting list. For information, contact:

Ron Crossman, Trip Chairman  
351 N. Post Oak Lane, No. 813  
Houston, Texas 77024  
681-1998

or  
Willi Schaufelbuhl, Assistant Trip  
Chairman  
623-8465



### J. RICH SPORTS Ltd.

2367 Rice Blvd. 529-8767  
1340 Galleria 626-3650

Charge Accounts Invited

# ASPEN Scene

JANUARY 28 - FEBRUARY 5

Ski Season Is Here!

The traditional Aspen trip is approaching fast, and total cost of the trip \$205 (\$155 balance) is due no later than the December 13 meeting. Please mail your money in early to avoid confusion at the meeting.

The Texas International chartered jet flight to Grand Junction will depart Houston's Intercontinental Airport Friday night, January 28th. Please be at the airport by 8:00 P.M. This year we will have 8 full days of skiing! Accommodations will be for 8 nights in the Chateaux duMont and Chaumont in downtown Aspen near the famous clubs and restaurants. The Little Nell ski lift is about one block away and the free bus to Buttermilk and Highlands stops at our back door. We have arranged for everyone to have 2 bedroom/2 bath apartments - four persons per unit. Departure will be Saturday February 5 about 6:00 P.M. in time to board our jet in Grand Junction and arrive in Houston about midnight.

C.A.B. charter flight regulations require trip participants to have been members of the club six months prior to departure.

**NOTE:** Due to the limited capacity of the airplane (99) our trip is full, but there is extra lodging available for a few people desiring to make their

own travel arrangements. Please contact the trip or assistant trip chairman.

Duke Walker, Trip Chairman  
2054 Southgate Blvd.  
or Res. 524-7387 / Off. 221-4091  
Ed Fedak, Assistant Trip Chairman  
Res. 622-8139 / Off. 222-2613

# Taos New Mexico

The Taos Trip  
Is Beginning To Fill Up!

That means all you indecisive types had better sign up and pay that deposit or be left in Houston when that "boy, wouldn't it be great to go skiing one more time this year" trip leaves for Taos on March 7.

And to you folks who find talk of long vertical drops, powder snow, and no lift lines empty chatter because you spend your day on your bottom - either out on the slope or in the bar - Taos has something for you - GLM! GLM is a non-alcoholic, painless remedy for beginning skiers. GLM starts beginners on short skis which enable a normal beginner to accomplish parallel type turns in the first day. In addition, this teaching method widens the beginners horizons to more of the mountain than "Fanny Hill". Taos has a four mile beginners run from the top of the mountain which lets you see and enjoy what skiing is all about.

The town of Taos, New Mexico is a noted creative arts center with many studios and shops open for browsing and spending all the money you save on the cost of the trip. (This trip even has something for non-skiers).

The trip will leave Houston Friday at 4:30 P.M. March 4 and arrive in Albuquerque at 7:30. Because the flight is not a dinner flight, we will break up the grueling 2 hour bus ride to Taos by dining at La Fonda in Santa Fe, New Mexico. La Fonda is an excellent continental restaurant noted for its food, decor and service. After dinner, the journey will continue to the Kandihar condominiums in Taos Ski Valley. Skiing begins the next morning.

### For Skiing Pleasure in '71-'72

Dymastar  
K-2  
Head  
Fischer  
Daiwa  
Dynamic  
Hart Skis

Lang  
Hanson  
Henke  
Rieker Boots

**RENTALS:**  
Skis, Boots,  
Poles, Pants,  
and Parkas

Edelweiss  
Alpine Sports  
Bogner  
Head  
Spinnerin  
Meister  
Sportscaster  
Ski Clothes



We will leave about 2:30 P.M. on Tuesday, March 7 and return to Houston that evening.

Cost of the trip will be \$145.00 which includes transportation, lodging, and two parties while at Taos.

The choice of spending 4 days of skiing in sunny New Mexico is yours. For more details, call

John Gonnerman, Trip Chairman  
(Home) 729-6014  
(Office) 221-3949

or

Jim Lilyquist, Asst. Trip Chairman  
921-4054



MARCH 28 - APRIL 2  
MARCH 30 - APRIL 3

For Spring skiing at its finest, Vail is the place and Easter is the time!

There is still time to reserve your place on one of Space City's TWO fabulous Easter "Playcations".

YOUR NEW  
SKI SHOP

DRYLAND SKI SCHOOL  
Ed Williams, Certified  
PSIA & RMSIA

**KNEISSL** ★

Kneissl skis and Geze bindings.  
Rossignol Skis  
Trappeur Boots

RUTH ROY, PROP

*"Locked On"*

**SPORTS**  
9703 KATY FREEWAY  
464-2873

TOTAL SKI FASHION

**anba**  
of austria

SHOPPERS CHARGE BankAmericard

The first of our groups ("A") will depart Houston on Tuesday afternoon for a dinner flight to Denver, then by bus to Vail in time for a evening of fun. Group ("B") will depart Houston on Thursday afternoon for Denver (also a dinner flight), then on to Vail. Both groups will be staying at the Mountain Haus condominiums, which are located in town (at the covered bridge) just two SHORT blocks from Gondola No. 1. The many fine restaurants, bars and shops of the "village", plus club parties, will insure that everyone has a good time.

On Sunday afternoon (after almost a full day of skiing) Group "A" will bus back to Denver in time for a return dinner flight to Houston - arriving about

10:00 P.M. Monday will find Group "B" returning to Houston (also about 10:00 P.M.)

Remember, a \$50.00 deposit is required of everyone who wants to ski fabulous Vail at Easter. (A word to the wise: Hesitation now may cause disappointment later). Total Cost:

Trip "A" \$179.00 (5 days)  
Trip "B" \$165.00 (4 days)

For more information, contact:  
Martha Sanford, Trip Chairman,  
Group "A" - 785-8589

or

Jim Grassman, Trip Chairman,  
Group "B" - 498-3228

# SKI YOUR BEST SHOT.

Make it to Colorado, New Mexico or Utah on Texas International.  
Get it together with nine others and we'll fly all of you round trip for 1/3 off, and you don't even have to come back together.

**Texas International**  
serving 9 states and mexico



# NOW

## is the time to sign up for 'THE BEST TRIP OF THE YEAR'

The real swingers of the club are signing up now for the FUN trip of the ski season. This FANTASTIC week of excitement (enough to last a lifetime) is beginning to fill up. With a departure still four months away we are approaching the half full mark. Word of this super ski trip must be spreading because we even have a swinger from Oregon signed up, as well as some crazy "cajuns" from the crayfish state. YES . . . .

# SKI FAMOUS LAKE TAHOE

*with*

Space City Ski Club

MARCH 11 - 18

THE BEST TRIP OF THE YEAR - that is our motto, and we mean it. Lake Tahoe offers the most beautiful scenery, the most luxurious accommodations, the best skiing, the best night life with live entertainment and yes, the world's largest casino - SAHARA TAHOE. Come join us - March 11-18 for the very best. The cost is only \$265 and here is what it includes:

- All transportation (including transportation to and from ski areas)
- First class accommodations (color TV) at Sahara Tahoe
- \$1.00 discount on lift tickets (Monday - Friday)
- Nightly Fondue parties
- One beer party
- One wine party
- Bellman gratuity

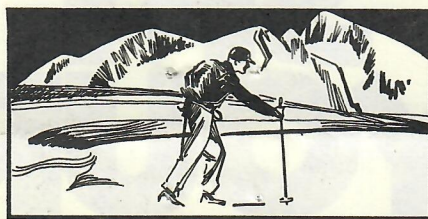
At present we are planning to leave Houston Saturday morning, March 11th arriving Lake Tahoe about 1:00 P. M., giving you a half day of skiing. We will stay at the Sahara Tahoe, on the South Shore and the hotel will provide transportation to all ski areas around the lake - at least 3 days transportation to Squaw Valley which is at the North end of the Lake. The return flight is scheduled for Saturday morning on March 18th arriving in Houston early that evening.

If you are interested in skiing in this beautiful and exciting area, please stop by our table at the next meeting.

Jim McIntyre, Trip Chairman  
2200 Fountain View No. 65  
Houston, Texas 77027  
Res. 782-8991 / Off. 227-4371

or

Margie Fanette, Assistant Trip  
Chairman  
Res. 623-2226 / Off. 224-5301



# ON-THE-AIR

## FLASH!!!

KLYX SKI REPORTS (102.1 on your dial) SPONSORED BY:

J. RICH SPORTS, LTD.

Starting on December 1, 1971 . . . . .

### Time of Broadcast (Approx.)

Wednesday . . . . 6:15 P. M.

Thursday 7:15 A.M., 12:15 & 6:15 P.M.

Friday . . . 12:15 P.M. & 7:15 P.M.

### Information Included

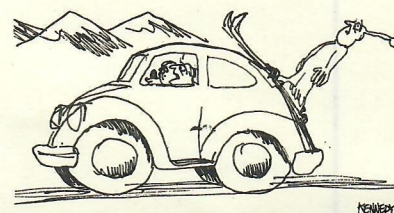
Skiing conditions, new snow, weather conditions, road conditions, and total snow depth.

### Areas:

New Mexico: Sierra Blanca, Santa Fe, Taos, Red River, Bandia Park.

Colorado: Aspen, Vail, Aspen Mt. Snow-Mass, Breckenridge, Steamboat Springs, Winter Park, Loveland, Crested Butte, Arapaho Basin and Monarch.

Other areas may be included week by week. The reports are updated every 24 hours.



"Gee, I sure hope his bindings thaw out before we get home."

SKI 11/70

## Ski Alberta...

## BANFF & JASPER

- DIRECT SERVICE VIA DENVER-CALGARY
- CHECK ON NEW LOW TOUR-BASING FARES



**Western Airlines**

1704 Southland Center Dallas, Texas 75201  
Call Western or your Travel Agent for details



# EVERYTHING YOU'VE EVER WANTED TO KNOW ABOUT Skiing

(But didn't know  
whom to ask)

## SKI TIPS

By Ed Williams

Certified RMSIA PSIA

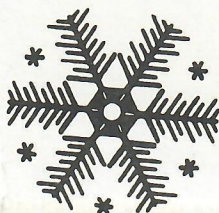
Since I have gotten into teaching early this year, (with the aid of the new teaching ramp), a lot of the same mistakes made by both the beginning and intermediate skiers are again apparent. A typical example is the case of the student who took one lesson and then skied several days after that trying to pick up the rest on his own. They have developed a bad habit which is hard to break.

Many of you have developed a habit of trying to twist the hips and shoulders in a counter-clockwise motion to make the skies turn. "I can't seem to get my skies parallel after completing a snow-plow turn," you complain.

The ski turns due to pressure being applied on the turning ski. The opposite ski must remain at essentially the same angle on the snow. Twisting puts the opposite ski on a very hard edge and also puts weight on the opposite (uphill ski). This causes the skier to be pushed sideways down the hill, rather than turning. The ski cannot be brought parallel due to the fact there is weight on this ski.

In the twisting method, the skier has the illusion he is turning, because his body faces first one side and then the other. However, he is actually slipping sideways down the hill, first one side and then the other, in a straight line.

To correct this error, keep the hips and shoulder square between the snow-plow and merely apply pressure to the ski by pushing the knee towards the tip of the ski. When the ski begins to turn the opposite ski can then slide parallel.



SKI, HOLIDAY 1970



## ICE SKATING PARTY

Our next ice skating party will be on **December 20, 1971, Monday night** starting at 9:00 P.M. The wine and cheese will be served at 10:00 P.M.

The skating party last month got off to a big start with about 50 SCSC Skaters.

Broomball was played and the goalies were the star attractions.

As you can see by the pictures, a good time was had by all, but we would like to see more of you this time. Mark your calendars . . .

**Monday, December 20th at 9:00 p.m.**  
**Winterland Ice Skating Arena**  
**2400 Norfolk (off Kirby and Richmond)**





## WEDDING ANNOUNCEMENTS

### CONGRATULATIONS to the NEWLYWEDS!!!

Dusty Smith, a long time bachelor, and one of the original members of SCSC, married another SCSC member, Linda Campbell, on July 30, 1971.

Also, congratulations to Res Kuenzi and Sandra Hicks.

Congratulations to Pat McLaughlan and Diane Emmons.

And, congratulations to Ben Raines and Conni Taylor.



Dues for SCSC membership are \$10.00 for singles; \$15.00 for marrieds. Make checks payable to: **SPACE CITY SKI CLUB** and mail to: Joyce Testa, V-P Membership, 2408 Yorktown, Apt. 240 Houston, Texas 77027



### MEMBERSHIP REPORT AS OF NOVEMBER 22, 1971:

Total Single Members	. . . . .	650
Total Married Members	. . . . .	268
<b>TOTAL MEMBERSHIP.</b>	. . . . .	<b>918</b>

### NOTE...

There will be a dry land ski school held at **Locked In Sports** located at Katy Freeway and Bunker Hill, for the beginning skiers going on the December Aspen trip. The class will be held December 20 at 7:00 P.M. Please call Ruth Roy at 464-2873 to make reservations for this class. It will consist of teaching about the use of the equipment you will use and a basic introduction of ski instruction and a demonstration of skiing. There will be no charge for members for this. You will have the opportunity to sign up for lessons if you desire to learn to ski or improve your skiing before going to the slopes. Instruction will be given by Ed Williams, a certified Instructor and member of the Professional Ski Instructors Association.

## OKTOBERFEST

Our Annual Wurstfest trip left Houston on October 30 at 10:15 A.M. We left 15 minutes late to account for those late sleepers. The first Bloody Marys were served as we pulled from the parking lot at Briargrove. For those who slept past breakfast Kolaches were served (recommended by Pat McLaughlan).

After many Bloody Marys, we crash landed in New Braunfels in time for beer and sausage. The types and varieties of sausage were as varied as the Space City members on the trip.

About 3:00 P.M. we had the "*what do we do now syndrome*" and some of us found our way to a local bar, the "Town and Country Inn" (escorted there by the local golf pro).

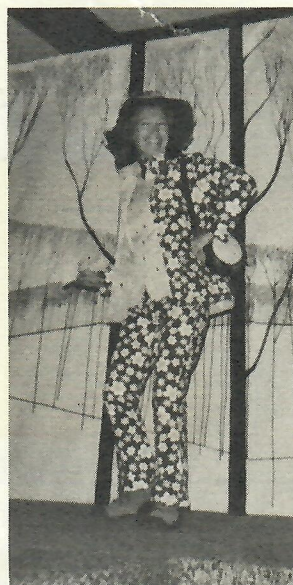
Many enjoyed dancing to the "Um-Pa-Pa" music despite the crowds and the heat. Fun was had by all. The bus "flew" back to Houston and we got home late but in time for the Sunday Paper . . . tired but happy!

**Leigh Brazil**  
Chairman

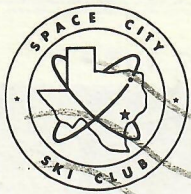




THE GRÉATEST SKI SHOW YET!

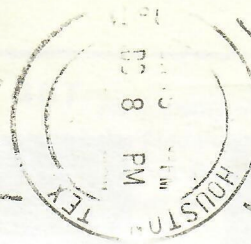






## SPACE CITY SKI CLUB

P. O. BOX 22567  
HOUSTON, TEXAS 77027



### DATED MATTER

Page 10

DECEMBER 1971

THE SITZMARKE

### RMD OBJECTIVES

Third in a Series

The stated objectives of the RMD include such things as the development and training of skiers, stimulations of skiing competition, cooperation with the Olympic Committee, AAU, and federal government agencies for the promotion of skiing, and providing individual training in ski safety and winter rescue. These by-laws were probably written several years ago and, although written to cover skiing in general, pretty much reflect the former racing position of the organization. I do not believe that they accurately represent the present posture of the RMD. The current and previous administrations have actively tried to include the recreational skier in RMD activities. By-laws changes have been made to give us a stronger voice in RMD affairs. We have seats on the Board of Directors and on the membership and recreation committee. New programs are being instituted to encourage participation by the recreational skier and to provide bene-

fits for him. The problem is - what are the objectives of the recreational skier and how should the by-laws reflect this? What do you as a skier want that a national organization can provide?

Is it ski trips? (Our European trip this year and the low price we're getting is in reality an RMD trip. It is an outgrowth of our efforts to organize Texas skiers. Our Aspen trip in February is a little less expensive because at an RMD sponsored meeting your officers were able to agree with another club on plans to share an airplane to reduce deadhead charges. This is just a beginning. We expect to do more of this and extend our bargaining power to get better lodging rates. If all the clubs in Texas organize, we could bargain for lodging for a month or more rather than a week).

Is it lift prices? (Your \$4.00 membership buys a chit good for \$5.00 on the price of a lift ticket. Discounts on bulk purchases of tickets have been available to some areas and will hope-

fully be extended to other areas next season).

Is it education and training? (A new program is being considered to provide dry land type clinics for training in the latest techniques. The RMD can provide instruction for our instructors who will then hold clinics locally).

There are numerous other things that the RMD is doing for the recreation skier and the objectives in the by-laws just can't convey the proper message. The real objectives far surpass the stated objectives, and I haven't even touched on the many racing and ski touring activities of the RMD.

I have said before that the RMD needs our support. Now I would like to say that we need the RMD. The contacts and bargaining power of a nationwide organization is needed by every recreational skier and I urge you to join. Please use the coupon below to help the RMD help you.

Darwin Miller



### RMD APPLICATION FORM

ANNUAL DUES: \$4.00

MAKE CHECK PAYABLE TO:

ROCKY MOUNTAIN DIVISION/USSA

MAIL CHECK TO:

Darwin Miller  
1631 Wavecrest  
Houston, Texas 77058

Please Print

NAME \_\_\_\_\_

ADDRESS \_\_\_\_\_

CITY & STATE \_\_\_\_\_ ZIP CODE \_\_\_\_\_

SKI CLUB \_\_\_\_\_