



# sitzmarke

june 1974



## space city ski club 1974-1975

### HARRY GASTON

President . . . . . 468-7414

### TOM BALDWIN

Vice President - Trips . . . 674-2092

### WAYNE AHRENS

Vice President - Programs . . 626-9819

### JEANNE NEU

Vice President - Membership 783-9440

### DIANE MATTHEWS

Vice President - Publications 681-0176

### LINDA JUDGE

Secretary . . . . . 783-9449

### BOB OLSEN

Treasurer . . . . . 524-2730

## executive board members

Jeanne Bridgman

Jerry Chiles

Jerry Goldberg

Jim Grassman

Jerry Kearby

Jerry Maley

Jim McIntyre

Jean Merritt

Kay Nevels

## sitzmarke staff

### PUBLISHER

Space City Ski Club

### EDITOR

Diane Matthews

### ASSISTANT EDITOR

John Matthews

### CONTRIBUTING EDITORS

Jeanne Neu

Jerry Kearby

Janet Pickell

Susan Rehder

Bob Allgeier

### MONTHLY FEATURES

Ed Williams - Ski Tips

Ann Cornish - About Houston

Karen Brady ) Apres Ski?

Peggy Adams

The Sitzmarke is published monthly by the  
SPACE CITY SKI CLUB

## programs

### SUMMER ACTIVITIES

By WAYNE AHRENS

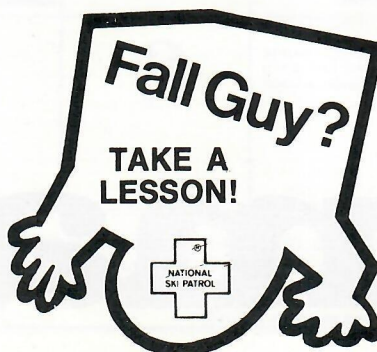
Ski Club Meeting are over until next September so there will be no program this month, but don't forget the ski club. We have many interesting summer activities coming up.

During May, we had a bicycle trip and the Booth Stomp. This month, we have the annual trip to the horse races in Lafayette. We will be departing Saturday morning, June 22 and returning Sunday afternoon. The trip chairman is Jim Newlin: Office No. 479-2331, or Home No. 748-4307.

Remember July is the month of the annual picnic. Beer, soft drinks, bar-be-que, volleyball, sailboating, etc. Plan on coming for a great time.

Other activities planned for this summer are the yearly luau in August, a canoe trip in September, a tennis tournament, and of course, a trip to the Wursthfest. So don't forget to continue reading the Sitzmarke during the summer for notice of these upcoming events.

SKI TIPS by Ed Williams will be in hibernation for the months of June, July and August.



## editor's comment

Most of us who have watched the Sitzmarke grow and blossom into the sleek young thing being produced at this time are very aware that this sophisticated lady didn't get this way without the efforts of many, many interested contributors.

NOW . . . As you have all surely figured out . . . This is a plea for HELP!! The Sitzmarke Staff needs volunteers to write feature type articles. The length of these articles is determined only by the subject matter and your own verbosity. We have a number of articles which need to be written and we are also open to all suggestions (especially if you have "expertise" in some particular area(s).

We hope to accumulate enough copy during the summer months to enable the staff to prepare Sitzmarke layout for several months in advance rather than the usual last minute scramble each month.

Also, do not forget the COVER!! All of you who have been waiting for the chance to be covermen (women). Never let it be said that we do not participate in equal opportunity for everyone. Now's your chance!!!

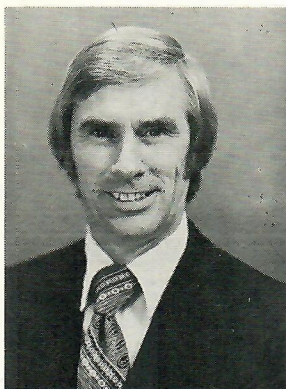
**d  
o  
'  
t  
  
b  
e**

**stingy**

**!**

Share those latent talents that are rumbling around begging to emerge into the sun of fun-loving activity. The Sitzmarke NEEDS YOU!

## from the head of the lift line



By Harry Gaston

Transition is generally difficult and is also accompanied by surprises which are rarely anticipated until they occur. The transfer of leadership from the preceding officers to the current officers has been smooth with good cooperation. However, there have been surprises. The most significant of these involve the Club finances and the Sitzmarke.

On May 1st when the current officers officially took charge, it was a surprise to find that the Club's checking account had a balance of only about \$100. This is not bad for a non-profit organization when all the bills have been paid. It is not good when there are still invoices outstanding. One saving grace is that there is also a fair amount of accounts receivable from Sitzmarke advertising. Thus, the only solution is to defer payment of bills until those who owe us have cleared their obligation.

You may question why we face this tightness of funds when it has not been a problem in the past. A review of the financial statements published in the August 1973 Sitzmarke shows that the year ending April 30, 1972 produced a \$2,046 profit, and the year ending April 30 1973 produced a \$342 loss. This trend appears to have continued, since no increase in revenue has occurred from dues or Sitzmarke advertising. These are the two basic sources of Club income. During the past year, the Club has operated as

it had the preceding year, providing the same basic services to its members. However, in doing so, the cost of the Sitzmarke increased significantly. Without increased revenue, the result appears to be an increased operating loss. Faced with these facts, the Executive Committee decided to defer indefinitely the publication of a Year Book Roster in an attempt to solidify the Club's financial condition. The current plans are to publish a roster containing pertinent information about the Club and a membership directory in late fall 1974.

The most logical solution to reversing the deficit trends of the past two years without increasing dues, which I am strongly against if it can be avoided, is to increase the advertising revenue to the Sitzmarke. You will notice from the flyer in this issue that such a campaign is being launched. Support this effort so that a dues increase can be avoided. If this effort fails, there will have to be a dues increase effective September 1, 1974. To protect yourself against this possibility, send in your renewal application now.

This Club has progressed through the years as a result of the efforts of all of its members responding when called upon. Let's keep this progress going.

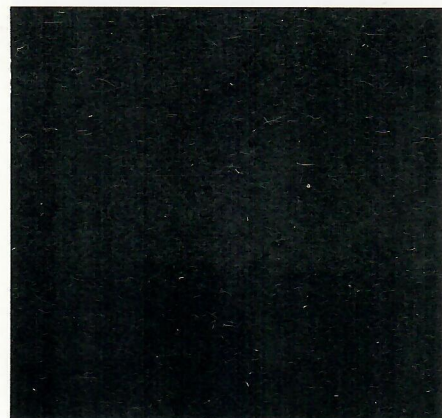


## swap shop

Please contact Pat Vigeon (phone 626-1712 or 783-3800) or Gladys R. Mierstchin (phone 777-2185 or 228-0815).

**SLALOM** — *an old  
Hebrew greeting that means  
"get down off that hill be-  
fore you break your neck."*

## '73-'74 officers say "thank you"



On April 28, the outgoing officers of Space City gave a cocktail party to say "thank you" to all those who had helped make their administration a success. All club members who had participated in such activities as membership check-in, programs, special events, drink ticket sales, etc. were invited.

Among the many seen nibbling and munching their way around the excellent array of food were Jerry and Jane Kearby, Jane Foster, Ray and Sandy Coker, Ken Cary, Jean Holland, Bob Petner, Elise Tapp, J. Castille, Trilby Wood, etc.

As the lighting was quite romantic (which means very dark) many managed to congregate at the food without attracting undue attention. Ron Crossman took some beautiful pictures encountering only one minor problem - the batteries for the flash had seen better days (illustration above).

All in all, a good time was had by everyone and this year's officers are looking forward to a repeat gathering with this season's committee members.

If you are interested in joining any of the Space City committees, please indicate on the enclosed application.

## markemaker



By Bob Allgeier

Hailing originally from Hot Springs, Arkansas, this month's spotlight illuminates a confirmed Houstonian and very enthusiastic skier, Ruth Roy. Seven ski trips this past season including four with SCSC leaves no doubt as to her preference in sports. However, she started her elegant little sports shop on the Katy Freeway as a result of frustration with her second love and it's not Carl Leatherwood, her favorite canoeing partner. It surfing!

Seems that surfing gear was unheard of and unavailable in these parts ten years ago. So, she and her kids wrote manufacturers for catalogues and made what they couldn't find. It wasn't long before local department stores were selling surfing equipment as fast as she brought it in. That led to her "Locked In" sport shop. (You're "locked in" when a gigantic wave is curling over your head and you stay up with it on your surfboard.)

Ruth is not only locked in on her favorite sports which include horseback riding, tennis and scuba (she is active in the Houston Diving Association, too) but on her personal philosophy which is based on self-confidence and self-starting. To wit, her next endeavor is to be kite-

wing gliding and she'll stock them in the shop. Watch out, Houston!

Besides running the style show in '72, making every meeting and many of the trips, she is the gal behind the movie projector when that's part of the program at SCSC meetings. At home, she tends her organic garden which features over-size tomato plants and raises tropical fish. Cognac, her black poodle, gave Ruth permission to attend the Club's Booth Stomp this year and no doubt will allow her to go on the annual canoe trip when he realizes how much it means to her.

Although a land owner in Stagecoach and Wolfcreek, Colorado, where she plans to build lodges, Ruth is currently very enthusiastic about her last trip to the very large Mammoth and Tahoe ski areas and hopes to return as soon as the snow flies. Especially if SCSC runs such a trip.

---

## membership

## renewal

## due

## now

---



**SCHUSS** — *the sound of pine branches swatting your face as you go off the trail at 45 mph.*

## winter wake

### '74

Old Man Winter was bid a fond farewell at Vail on April 20 and 21 during the RMD (Rocky Mountain Division-USSA) Winterwake 1974 festivities. A showcase of all aspects of skiing, from Alpine to Nordic to Recreational, was provided with something for everyone. The activities included a tennis tournament, fun races, carnival activities and drawings for many valuable prizes.

One of the most exciting events was the "bag" race. A ridge was cut in the snow weaving down the slope in a fashion similar to a toboggan course. The hearty entrants would pay their fee and proceed to run the tortuous course head first on their backs with a plastic bag between them and the snow. Talk about the dangers of the wet look ski attire - try a plastic bag!!

Lift tickets and accommodations were available to Winterwake participants at unbelievable savings. Ski shops were all having their season closeout sales. Over \$4,000 worth of new ski equipment and next year's season lift passes were presented at drawings held at the end of each day's activities.

All of this resulted in a desperately needed profit to the RMD and allowed the organization to complete the year in a fair financial condition. Plans are being made for a bigger and better Winterwake '75 to close out next winter. Although winter in the mountains is far from over at this time, and the snow is still in good condition for skiing, the activities mark the closing of the major ski areas.



## apres ski?

The goal of this column this year is to tell you what our fellow members are doing when they are not skiing. We would like to solicit your help in calling us each month and letting us know what you've been doing, or are about to do. Our telephone numbers are at the end of the column so please use them!

Now to get on with what our busy members have been doing this past month.

**Randy Butler**, who has been living in Morgan City, Louisiana, will be moving to Houston soon. He's been one of SCSC's long distance members. **Tom and Judy Cronin** had to take their ski vacation without the Club to Vail this year. They got on the plane to come home and met the SCSC Banff members returning to Houston on the same plane. **Carl and Mary Amburn** are taking a trip to Venezuela for both business and pleasure. **Halene and Ron Crossman** are on a cruise about now on the M/S Southward. They will be hitting the port cities of Cosmel, Panama, Cartegnena, Columbia and Montego Bay. **Don and Marjean Doucette** have finally moved into their new townhouse on Riverview. Marjean is looking forward to one of her first visitors, her mother-in-law, who will be making her first trip to Texas in July to see them. **Deene Sullivan and Diane Morish** tied the knot April 6th. Congratulations! **Larry Henderson and Donna Daniel** were married April 26th. Ditto!

**Andrea and Darwin Miller** are still active in the Clear Creek Country Theatre. Darwin has most recently played the part of Marlowe, the bashful suitor, in "She Stoops to Conquer" by Oliver Goldsmith which ran March 15 through April 6. SCSC's member, **Nancy Pfluger** who is also an active member in Austin's Ski Club has taken on the chore of V.P.-Trips again this year with the Austin group. Nancy, we just wish you lived in Houston.

The Texas Ski Council has elected our own **Jerry Kearby** as President this coming year. He will accept the gavel from outgoing President **Darwin Miller**. **Karen Steiner**, a broker for White, Weld & Co., has been spending some of her free weekends in New York visiting a special "friend". You can bet it's not **Mortimer Snerd**!

**Juanita and Warren Michaels** just got back from a sailfishing trip to Mazatlan. Warren says they caught a record-breaking sailfish . . . Juanita says they didn't have any luck. Now, I wonder which one we should believe. **Duff and Angie Trimble** took a week off to go bass fishing at Sanee-Cooper Reservoir in South Carolina. They drove, pulling their boat, all the way from Houston. **Russell Smith, Jim McCampbell and Don Allen** took off for San Francisco for the "Bay-To-Breakers" AAU sponsored foot race. They will be competing in the 7.6 mile race. Boy, that's staying in shape for skiing, isn't it?

The Sitzmarke was awarded second place in the U.S.S.A. Ski Publications competition which was held in Kansas City. Last year's Editor, **Jean Merritt** worked very hard on that publication and we are all proud of the job she did. If you can believe it, **Ed Williams** has taken to the water. He just brought himself a new 30' Chris Craft power boat. He named it, "The Big Verdict".

**Tiny Aitken** was Sharpstown hospitalized a few days ago with an injury to her foot. From what we hear, it didn't slow her down any. **Judy Allen** has changed jobs. She is now working as office manager for Dr. **Clark M. Hinkley** in OB/Gyn at Jeff Davis Hospital.

We don't want to see the same names appear in the paper, so let us hear from all of you!

**Karen Brady**  
Office: 529-4247  
Home: 783-5244

**Peggy Adams**  
Home: 783-2718



## RMD meeting in Kansas City

By Jeanne Neu

Kansas City's Crown Center Hotel was the site of the annual convention of Rocky Mountain Division of U.S.S.A. in early May. Representing Space City Ski Club were **Harry Gaston, Tom Baldwin, and Jeanne Neu**. The Club also carried the voting proxy of the Texas Ski Council given by **Jerry Kearby**, President.

In addition to the routine Business functions, which had to be attended to, a considerable portion of the sessions was devoted to ways of strengthening the RMD so it could be more effective in its effort to provide a greater service to both the recreational and competitive segments of skiing.

The presence of representatives from two of the other large and very active ski clubs, the Kansas City and Phoenix Ski Clubs, gave our delegates the opportunity to learn how other clubs are organized and operate. Many good ideas were obtained, some of which may be utilized to provide better service to our members.

Of particular interest to Space City was the report on the Winter Wake held in Vail the Saturday after Easter. This RMD money raising project attracted approximately 2300 skiers. About \$4,000 worth of donated merchandise was given away in drawings. The discounts on ski equipment and clothing in the local stores were substantial. Consideration is being given by Space City Ski Club to support this activity next year by offering our members a post-Easter ski trip.

Future Sitzmarke articles will discuss the activities of RMD and how your support of this organization contributed to your skiing enjoyment.

*Coming?*



Twenty-five SCSC members cranked up their bicycles Sunday afternoon, May 19 at Dozier's in Fulshear, Texas for the Club's second bicycle trek. Everything from a rather "antique" one-speed bicycle to more sleek, foreign 10-speed models was on hand

The participants, many being repeaters from the first trip in March or new riders having received advice from those who had gone before, came well equipped with water bottles, wine, sun shades, sun hats, etc. for the grueling 21 mile ride. Carol Weise in the true spirit of a real Space City trouser, appeared with her ski backpack in place, a camera over her shoulder, and a trusty bota bag slung over the handle bars of her bike.

Jeanne Neu, a last minute sub for trip chairman Susan Rehder who had come down with a bad cold, led the group out on what proved to be the easiest leg of

*Smile for the Camera!*



the trip, the seven miles to Brookshire. Even though the sun was beating down and the temperature was high, there was a slight wind at the riders' backs. Considering these conditions, the entire group decided to try the longer route and forego the graveled shortcut. Cycling toward Simonton, however, many of the riders wondered if they had made the right choice, as a headwind confronted them along the way. The several rest stops made were sincerely appreciated by all, as was Jim McIntyre's offer of wine. Finn Ruffalo and his rescue truck were very popular. He made several "pick-ups" - no names mentioned. His ice chest gave needed pause and refreshment to keep almost everyone steadily pedaling toward the final destination. Why were John Gable and Linda Wager first in to Dozier's? Could it be they drove their car 10 of the 21 miles to "catch up" with the pack?

*Going?*



After completing the final five mile leg of the trip back to Fulshear, the last hill of which had a few (yours truly included) wondering if we would make it after all, the group settled down for beer and bar-be-que. Susan, our original trip chairman, was there to see that we all made it back and share the good food with us.

## *Bike in Control*

By Janet Pickell and Susan Rehder



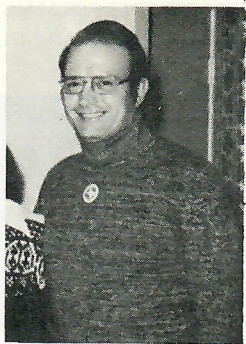
*What Am I Doing Here?*



*Pensive or Pooped?*



*"Pick-up" anyone?*



## texas ski council

By Jerry Kearby

The Texas Ski Council met in Austin last month for the annual meeting. Darwin Miller had arranged for representatives of several airlines and several ski areas to give us help and information about ski trips. The net result is the possibility of several ski clubs joining together to have "back-to-back" trips to certain areas. If enough clubs cooperate, this could mean a reduction in the cost of the trip as much as \$10.00 to \$50.00. We hope we can get all the clubs to join.

A report was made on Texas Ski Week in Vail this past winter. Everyone agreed that the races were well run and that the Shrimp Boil sponsored by Lone Star Beer

was out of sight. Also, the beer Lone Star donated was consumed very readily. With a little luck, we hope to have Lone Star help again next year and we should be even more organized on the races.

The final business of the meeting was to elect officers for '74-'75. The elected officers were: President; *Jerry Kearby, Space City Ski Club*; Vice President; Jack Dunn, Austin Skiers and Secretary-Treasurer; Scott Beery, Longhorn Ski Club.



## the forum

So many times, our members are heard at meetings saying "I wonder why they (the Club) don't do . . . or why is such and such . . .?"; but these thoughts are never expressed to the people who are in a position to respond or take action. This column is being introduced in a hope to achieve better communication along these lines. We *even* want to know about your *gripes*.

We sincerely hope that you (the members) will respond with your ideas, suggestions (and complaints) so that the Space City Ski Club staff will have an opportunity to know what you think and be better prepared to coordinate club activities.

Please mail the above mentioned to:

Space City Ski Club  
Post Office Box 22567  
Houston, Texas 77027

Attn: SITZMARKE EDITOR

*(We reserve the right to question, suggest or complain in response!)*

## annual scsc picnic

RESERVE A PLACE FOR YOURSELF AND YOUR FRIENDS

PLACE: WALDON MARINA at Waldon on LAKE CONROE

TIME: 2:00 P.M. till ????? JULY 20, 1974

Beer, soft drinks and bar-be-que will be provided. Be sure to bring your boats and water skiing equipment as the lake is beautiful and the Marina facilities are excellent.

A MAP WILL BE PROVIDED IN THE JULY SITZMARKE

Cost in ADVANCE will be \$3.50. Guests are welcome. Cost WITHOUT RESERVATION (at the Marina) will be \$5.00.

Please complete the form below and send to:

Finn Runfalo  
P. O. Box 2189  
Houston, Texas 77001

OR

Wayne Ahrens  
9006 Imogene  
Houston, Texas 77036

NAME \_\_\_\_\_

ADDRESS \_\_\_\_\_

PHONE NO. \_\_\_\_\_

MEMBER

NON-MEMBER

NO. OF GUESTS @ \$3.50 EACH

Please enclose check made out to: SPACE CITY SKI CLUB



SPACE CITY SKI CLUB

P. O. Box 22567

Houston, Texas 77027



FIRST CLASS MAIL  
U.S. POSTAGE  
PAID .20¢  
PERMIT NO. 9036

FIRST CLASS MAIL

DATED MATTER

sitzmarke

june-july

## about houston

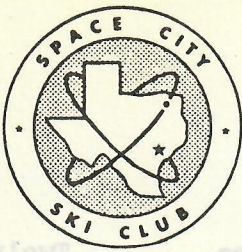
By Ann Cornish

SUNDAY	MONDAY	TUESDAY	WEDNESDAY	THURSDAY	FRIDAY	SATURDAY
<b>JUNE – JULY</b> <b>Key to Abbreviations</b>  BBP – BURKE BAKER PLANETARIUM COL – COLISEUM DGD T – DEAN GOSS DINNER THEATRE JH – JONES HALL  MOT – MILLER OUTDOOR THEATRE PLT – PASADENA LITTLE THEATRE WDT – WINDMILL DINNER THEATRE WS – WESTBURY SQUARE					Cole Porter Review, Alley thru September 2 Houston Grand Opera, Carmen, MOT, 8:30 Cactus Flower, PLT, 8:30 Living Universe, BBP, thru September 2 Sunday in New York, Sal Mineo, WDT, thru June 16 Prisoner of Second Ave.*	Houston Grand Opera, Threepenny Opera, MOT, 8:30 Cactus Flower PLT, 8:30 Sidewalk Art Festival, WS 10:00 till dusk Astros vs. New York Astrodome**
Cactus Flower, PLT, 8:30 Astros vs. New York, Astrodome, 2:05	Astros vs. Philadelphia Astrodome, 7:35	Astros vs. Philadelphia Astrodome, 7:35	Astros vs. Philadelphia Astrodome, 7:35	EZ Riders vs. Cleveland, COL.	14	EZ Riders vs. Denver, COL. 7:30
16	17	Prisoner of Second Avenue, Imogene Cocco, WDT 18	19	Oliver, Theatre Under the Stars, MOT, 8:30 Richard Hyman/Houston Symphony, JH, 8:30 20	Oliver, Theatre Under the Stars, MOT, 8:30 Astros vs. San Diego, Astrodome, 7:35 21	SCSC NO SNOW PREAKNESS Oliver, Theatre Under the Stars, MOT, 8:30 Astros vs. San Diego, Astrodome, 8:30 22
SCSC NO SNOW PREAKNESS Oliver, Theatre Under the Stars, MOT, 8:30 Astros vs. San Diego, Astrodome, 7:35 23	Astros vs. Cincinnati Astrodome, 7:35 24	Oliver, Theatre Under the Stars, MOT, 8:30 Astros vs. Cincinnati Astrodome, 7:35 25	Oliver, Theatre Under the Stars, MOT, 8:30 26	Oliver, Theatre Under the Stars, MOT, 8:30 27	Oliver, Theatre Under the Stars, MOT, 8:30 28	Oliver, Theatre Under the Stars, MOT, 8:30 29
30	1	2	3	FOURTH OF JULY CELEBRATION Houston Jaycees, MOT 4	Astros vs. Pittsburgh, Astrodome, 7:35 5	Houston Pops Orchestra MOT, 8:30 Astros vs. Pittsburgh, Astrodome** 6

NOTE: DGD T, all productions, performances daily except Monday, Buffet begins 6:30, curtain 8:30. ALLEY performances daily except Monday, buffet begins 6:00, curtain 8:30, Sunday buffet begins 12:30 and 5:00, curtain 2:00 and 7:30. ALLEY performances Wednesday and Friday 4:00, Friday and Saturday, 8:00, Saturday and Sunday, 2:00, 3:00 and 4:00.

\*DGD T thru September 2 - Astros vs. New York, Astrodome, 7:35

\*\* Saturday Astrodome game times indefinite. Consult local media or call 748-4500.



P. O. BOX 22567, HOUSTON, TEXAS 77027

### SITZMARKE ADVERTISING CONTRACT

SPACE CITY SKI CLUB("the Club") hereby contracts with \_\_\_\_\_

\_\_\_\_\_ ("Advertiser") to provide advertising space in THE SITZ-

MARKE, the Club's newsletter. Advertiser agrees to pay \_\_\_\_\_

(\$\_\_\_\_\_) Dollars for the advertising, which shall consist of \_\_\_\_\_

insertions in the following issues (circle) during the 1974-1975 season.

June	September	December	March
July	October	January	April
August	November	February	May

The rate for the foregoing advertising is \$\_\_\_\_\_, plus any cost for plates, color, space cuts, copy changes, or special layout, for the \_\_\_\_\_ issue or issues for \_\_\_\_\_ space. SITZMARKE advertising rates on reverse side.

Copy must be delivered to the undersigned Club representative by the 20th day of the month preceding the issue in which ad is to appear.

All amounts owing under this contract are due and payable in Houston, Harris County, Texas. Statements, which are payable upon receipt, will be sent ten days after publication.

Dated this \_\_\_\_\_ day of \_\_\_\_\_, 19\_\_.

ADVERTISER:

SPACE CITY SKI CLUB

\_\_\_\_\_  
(name)

By \_\_\_\_\_  
Authorized Space City Representative  
or Member of Executive Board

\_\_\_\_\_  
(address)

\_\_\_\_\_  
(address)

\_\_\_\_\_

\_\_\_\_\_

\_\_\_\_\_  
(telephone)

\_\_\_\_\_  
(telephone)

These are effective June 1, 1974

The above rates reflect discounts on multiple subscriptions as follows:

	-5%	-10%	-20%	-25%
1. <u>Advertising rates</u>	100%	95%	80%	75%
2. <u>Production costs</u>	100%	95%	80%	75%
3. <u>Transportation</u>	100%	95%	80%	75%
4. <u>Other charges</u>	100%	95%	80%	75%
5. <u>Net cost</u>	100%	95%	80%	75%
6. <u>Profit</u>	100%	95%	80%	75%
7. <u>Final price</u>	100%	95%	80%	75%

# SITZMARKE

## ADVERTISING CONTEST

### EARN A SKI TRIP (or some portion thereof)

#### — RULES —

- 1) Participants obtaining advertising for the SITZMARKE for the 1974-'75 season (July '74 through May '75 issues) will receive credit to be applied to a 1974-'75 Club ski trip in the amount as follows:

ADVERTISING OBTAINED	CREDIT ON TRIP COST
\$100	\$10
\$300	\$50
\$500	\$100

- 2) Contest runs during May, June and July unless changed by the Executive Meeting.
- 3) Any advertising or advertiser acceptable to the Advertising Committee and in compliance with the Standing Rules will be accepted except the following advertisers:
- |                      |                              |
|----------------------|------------------------------|
| Continental Airlines | Texas International Airlines |
| J. Rich Sports, Ltd. | Capital National Bank        |
| Oshman's             | Performing Arts Supply       |
- 4) All contracts must be submitted to Carolyn Beshara or Diane Matthews.  
Rates and conditions must be in accordance with the current advertising contract.
- 4) Credit earned toward ski trip is transferable to another Space City Ski Club member in good standing at a ten percent (10%) discount transfer charge.
- 6) Anyone eligible for Club membership can participate but must be an active member when applying for participation in a ski trip.

PLEASE CONTACT: Carolyn Beshara  
Home: 467-5639 / Office: 220-6350  
or  
Diane Matthews  
Home: 681-0176 / Office: 227-2343

# MEMBERSHIP FORM



**PLEASE PRINT**

## DUES

<input type="checkbox"/> \$ 10 Single	<input type="checkbox"/> New
<input type="checkbox"/> \$ 15 Couple	<input type="checkbox"/> Renewal

**MAKE CHECK PAYABLE TO: SPACE CITY SKI CLUB**  
**P. O. Box 22567**  
**Houston, Texas 77027**

**IF NEW, 2 SPONSORS REQUIRED**

**1** .....

**2** .....

**APPLICATION MUST BE COMPLETE TO BE VALID**

NAME ..... No.

LAST FIRST MIDDLE INITIAL

WIFE'S NAME ..... No.

ADDRESS (Street) ..... OVER 21 YRS

CITY STATE ZIP

Yes No

TELEPHONE NO. .... WIFE

Yes No

OCCUPATION - ENTER THE NUMBER CLOSEST TO YOURS   WIFE

- |                        |                                 |   |
|------------------------|---------------------------------|---|
| 00 Architecture        | 05 Writing and Publishing       | 10 Stenography, Typing and Related Services |
| 01 Engineering         | 06 Art and Photography          | 11 Sales - What.....                        |
| 02 Social Sciences     | 07 Entertainment and Recreation | 12 Transportation                           |
| 03 Medicine and Health | 08 Accounting and Auditing      | 13 Housewife                                |
| 04 Education           | 09 Managers and Officials       | 14 Draftsman                                |
|                        |                                 | 15 Other (Specify).....                     |

72-73 73-74

NUMBER OF SKI TRIPS TAKEN WITH CLUB     WIFE

72-73 73-74

**CIRCLE THE COMMITTEE (S) THAT YOU WOULD LIKE TO WORK ON.**

**A. I WILL HELP WHERE NEEDED**

**B. NONE**

- TRIPS**
- C. TRIP CHAIRMAN
- D. ASSISTANT TRIP CHAIRMAN
- PROGRAMS / SPECIAL EVENTS**
- E. STYLE SHOW
- F. FOLLIES
- G. SUMMER TRIPS
- H. LUAU / PICNIC

- MONTHLY MEETINGS**
- I. MEMBERSHIP CHECK -IN
- J. GUEST REGISTRATION
- K. PINS, PATCHES, DECALS
- L. DRINK TICKET TABLE
- M. R M D MEMBERSHIP
- N. **LIFT LINERS**
- O. AUDIT
- P. OTHER.....

- PUBLIC RELATIONS**
- Q. SITZMARKE - ART
- R. SITZMARKE - ARTICLES
- S. CLUB ROSTER
- T. **ADS FOR PUBLICATIONS**
- U. ANY BUT TRIPS
- W. ANY BUT PROGRAMS
- X. ANY BUT MONTHLY MEETINGS
- Y. ANY BUT PUBLIC RELATIONS

**RENEWAL DUE MAY 1st - SEPTEMBER 1st**

**AFTER SEPTEMBER 1st, ALL APPLICATIONS WILL BE NEW**

**APPLICATIONS NOT RECEIVED BY 1st OF ANY MONTH WILL REQUIRE GUEST FEE AT NEXT MEETING.**