



# S i t z m a r k e

February  
1980





# 1979 - 1980

## space city ski club

## ski meeting

★ MONDAY

★ FEBRUARY 11

★ 7:30 P.M.

Sonny Look's SirLoin Restaurant  
South Loop West at South Main  
SHOW YOUR 1979-1980 MEMBERSHIP CARD  
AT THE DOOR

### 1979 - 1980 OFFICERS

Keith Eastin.....461-6855 (O)  
President  
Easy Thayer.....499-2294 (H)  
Vice President - Trips  
Tom Mercer.....663-2137 (O)  
Vice President - Programs  
Tiny Aitken.....780-4780 (H)  
Vice President - Membership  
Beth Nolen.....468-4268 (H)  
Vice President - Publications  
Sheryl Rogers.....467-0569 (H)  
Secretary  
Craig Meyer.....621-5594 (H)  
Treasurer

### EXECUTIVE BOARD MEMBERS

#### Current Officers

Bob Allgeier, Chairman

Shirley Andries	Mary K. Nicholson
Jim Benefield	Bob Olsen
Cynthia Lackey	Janet Pickell
Sy Liebergot	Jim Plummer
	Gene Turboff

### TRIP DIRECTORS

Joe Cotrone Anne Benefield

### SITZMARKE STAFF

PUBLISHER	Space City Ski Club
EDITOR	Beth Nolen
ADVERTISING	Beth Nolen
	Lynn Zacherl

### CONTRIBUTORS

Gar Bering  
Graham Barnes  
Tania Andrasko  
Ellie Stern

### COVER PHOTOGRAPH

SCSC Archives

### MONTHLY FEATURES

Head of the Liftline Keith Eastin

The Sitzmarke is published monthly by the  
SPACE CITY SKI CLUB

Volume 12, Number 10 February, 1980

# calendar

**GENERAL MEETING.....February 11**

*Guest Speaker — Laura Thomas, Assistant Director*

**Park City Ski Corporation**

**Taos.....February 14**

**Las Vegas Party/Weekend.....February 22**

**Telluride.....March 1**

**Copper Mountain.....March 9**



### PLEASE CARPOOL!

SCSCers, we need your help! Attendance at our meetings is great but our PARKING SPACE IS LIMITED. Please park in Sonny Look's lot only. The security guard is on duty only during the meeting period. Don't leave your car on the lot after meetings. Most of you go home with a friend; so car-pool to the meetings and help us with the parking problems.

### sitzmarke deadlines

★ February 14, 1980

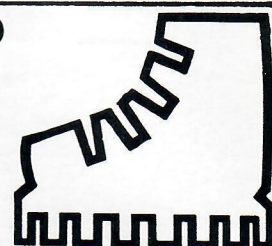
★ March 20, 1980

★ April 16, 1980

### NOTICE!

There is a waiting list to join SCSC. If you are moving out of town and would like to relinquish your membership, please contact **Tiny Aitken**, phone 780-4780.

### swap shop



• **FOR RENT:** Ski the Summit! Four bedroom, two baths deluxe house overlooking Lake Dillon. For rent by the week. Phone 932-8674 from 8:00 to 4:30 Monday through Friday.

• **FOR LEASE:** 1 bedroom, 1½ bath luxury townhome. Pool, clubhouse, tennis facilities available. Westheimer near Dairy Ashford. Call Dave Reitze (H) 781-2957, (W) 656-4908.



# head of the liftline



by Keith Eastin

## NEWS FLASH:

As more than adequately described elsewhere in this issue, Space City has once again captured the Texas Cup. We have now won the award three consecutive times and four out of the last five years. This year the margin of victory was greater than at any time during recent memory as the Club amassed 1,432 points. The second place finisher, Alpine Ski Club, garnered 932 points.

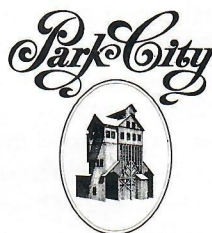
Probably, understandably other clubs are grumbling about our dominance at Texas Ski Week. Several rumors were circulating at Winter Park, two of the most interesting of which deserve some analysis. First and the easiest to deal with is the following allegation: "You can't join Space City unless you are a good skier." The Club runs ski trips making skiing available to 700 to 750 individuals per year assuming none of our members participates in more than one trip per year. We currently have 1,400 members plus a substantial waiting list. Almost by definition, half of our membership does not ski at all during any given year. A further analysis of our membership rolls reveals that nearly one third of the members at the beginning of the year have *never* skied before. So much for rumor number one.

A different source at Winter Park came up with the proposition that "Space City will not allow you to attend Texas Ski Week if you don't agree to race." 140 Club members attended Texas Ski Week this year, 103 members actually raced. In short, one quarter of all of our so-called "good skiers" could not be pushed, pulled or cajoled onto the racing hill. So much for rumor number two.

Why then are we so successful? It certainly is not because our Club has the fastest skiers at Texas Ski Week -- none of our people finished in the top ten of the individual races. I believe the real reason for success is our Club spirit -- we take great pride in winning the only competition between all of the clubs in Texas. Everyone who can contribute does so to his or her abilities. Not only do excellent skiers like **Harry Gaston** and **John Terzakis** turn in their usual medal-winning performance, but many novices also give their utmost. **Theresa Sweeris**, who had skied for less than two weeks in her life, finished the course in less than 30 seconds and **Steve Van Pelt** - who skis more on guts than form (no offense intended, Steve) came home with a Bronze. Numerous examples of this spirit and desire were evident during the races and are discussed elsewhere.

Thanks and congratulations go to all participating. A tradition is in place for future years to follow.

**REMINDER:** The Nominating Committee's slate of officers for next year is included herein. Members may nominate any additional individuals for any office. Those nominations must be made from the floor at the February 11 meeting.



\$340.00



APRIL 5-12

**A WELCOME SURPRISE FOR A CHANGE:** The price of our late season adventure to Park City, Utah has been reduced by forty-nine dollars. You can now get traditionally great skiing at one of the bargains of the year.

# Unsung Heros

*A special thank you to those members who volunteered their time and assistance during the January General Meeting.*

## DOOR GUARDS

Jim Knox  
Stan Kuper

Rick McFarland  
Bob Petner

## GUESTS AND MEMBERSHIP

Susan Cramer  
Maryland Edwards  
Linda Read

Jan Petner  
Gail Quenneville  
Joe Reventas

## LIFT LINERS

Roy Caviness  
Bill Eldridge  
Gloria Hodge

Bruce Maughs  
Marian Mulkey

## DRINK TICKETS

Glenn Bishop  
Lynn Burch  
Penny Chancey

Pam Perry  
Kathy Zaccaria  
Lynn Zacherl

## SOUND SYSTEM

Pat Webster

## PINS, PATCHES, DECALS

Lee Eriksen

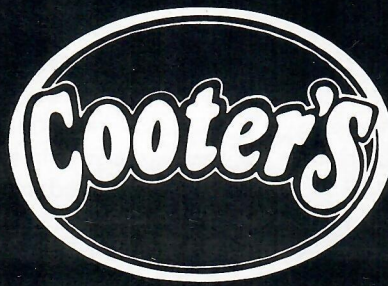
Barbara O'Neal

# Ca- vort

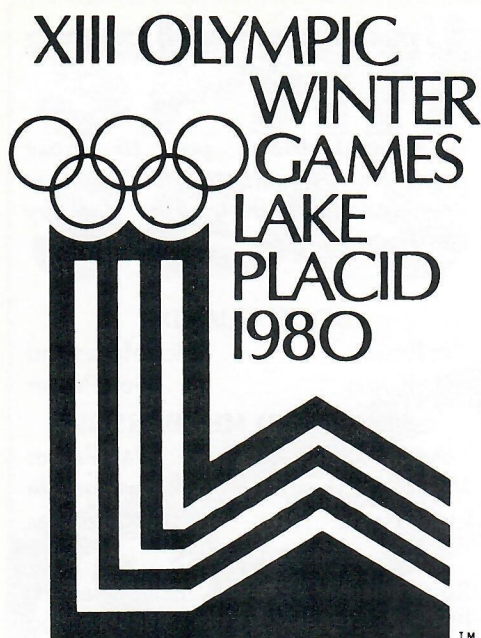
At the goodtimes place

- Continental disco for dancing
- Backgammon for conversation
- Tantalizing hot hors d'oeuvres in the early evening
- Attitude adjustment hour from 3 till 9
- Live entertainment most Mondays
- Movement, mingle, the goodtimes place

Cooter's . . . just south of the Galleria  
Richmond at Sage. Houston • 961-7494







This February I will have the unique privilege and pleasure of being one of the nearly 1,700 officials helping to conduct the 1980 Winter Olympic Games. The first question most people ask when they hear that I will be officiating at the Games is how I got such a position. The flip answer is that I sent in my resume. The real answer is related to the question of how an event such as the Olympics is structured. The sanction to organize the Games is given to a local organizing committee, whose function is to bring together the money, facilities, and resources, and to provide support management during the Games. The sanctions to run the actual competitions are given out separately to the various national governing bodies of each sport, such as the USSA in the case of skiing. USSA is then responsible for assembling the on-snow race committees. For these Games, the decision was made to recruit the best possible set of officials from the entire country, rather than stick with local people. I was selected to be the "scoreboard producer" for cross-country because I am one of the few certified XC officials who is also experienced in non-standard computer input-output hardware.

The Pre-Games, which I attended last October, were both interesting and rewarding. The very first reaction any Houstonian will have on arrival in Lake Placid is to the cold. Located in the mountainous area not far from infamous Buffalo, its higher altitude attributed to the -42°F the day I left. The

## A Houstonian's Personal View

by Gar Bering

unique atmosphere of the site itself, however, could possibly tend to deter any discouraging thoughts that the weather conditions might inspire. During the Pre-Games everyone was in the Lake Placid Club, which is an immense, slightly decaying relic of an 1890's private club. The relatively small accumulation of personnel made it possible to appreciate the beauty of the area, the picturesque charm of the town, and the drama and electric excitement of a major international sports event. This year, I am afraid that the sheer pressure of the crowd will dilute if not alter the atmosphere. I had an inkling of what could be expected when I discovered that the restaurants in town were taking prepaid deposits for reservations. Having run other major ski events involving mass transportation in significant amounts, I foresee enormous problems posed by trying to transport the thousands of people daily by bus. If no major hitches develop, the man responsible should be given a vacation by asking him to cure inflation or something easy! (I personally will have to be prepared for a 6:30 or 7:00 a.m. bus for officials from our cozy trailer park, and I confidently expect to have to ski to the venue at least once during the Games.) I hope that the attendance limit of 56,000 and the ultra-strict limits on private autos are enforced and thereby preserve some of the atmosphere. In fact, a good crowd will enhance some aspects of the excitement and opportunities to meet people from abroad. However, nothing will replace experiences like the evening the competitors started to table-hop amongst the officials, or having drinks with the Russian coaches, and I don't think I will have either opportunity this year.

One of the many things the LPOOC has done well is the choice of officials' uniforms. Consisting of an overall-type insulated ski suit, moon-boots, insulated gloves and woolen hat, the uniforms are both comfortable and very warm. These suits are also all the same color, regardless of an individual's functions. Since almost all of the people around during the rehearsal Pre-Games were officials, I now have a vivid, light

blue version of life in a mono-wardrobe society. Another inevitable consequence of the uniform is that the officials are all known as clones. We even have a theme song ... "Send in the Clones." I could go on, but you get the idea.


But what about the activities themselves? Below are brief descriptions and personal comments on each of the venues:

### Mt. Van Hoevenberg Cross Country

This venue, 29 kilometers of cross country trails covering 1,028 acres, is the only cross country stadium in North America, and, with only 5,000 seats, has 1/20th the capacity of the largest one in Europe. The trails at Mt. Van Hoevenberg were constructed in 1968-1969 for the John F. Kennedy Memorial Games. They were used for the World University Winter Games in 1972 and for the 1978 North American cross country championships. Men compete in 15 kilometer special, 15 kilometer combined, 30 kilometer and 50 kilometer events. There is also a 4 by 10 kilometer relay for men. Women compete in 5 kilometer, 10 kilometer, and a 4 by 5 kilometer relay. To me, this is the most beautiful of the venues at Lake Placid. The nearby Adirondack peaks overlook without overwhelming to give a very special effect. It is particularly striking on clear days when the blue sky, evergreens, and dazzling white snow provide a splendid backdrop for

(continued on page 10)

**Mountain  
Haus  
at Vail**



**Your place  
in the  
Rockies**

Single and Double Rooms / Suites / Apartments  
Complete Group Meeting Facilities and Services  
Heated Pool and Sauna / Restaurant and Lounge

**Mountain Haus at Vail**

Box 1748 Vail, Colorado 81657 303/476-2434



# NOMINEES FOR 1980-81 OFFICERS

*President*.....Linda MacFarland  
*Vice President - Trips*.....Anne Benefield  
*Vice President - Programs*.....Bob Petner  
*Vice President - Membership*.....Marty Matras  
*Vice President - Publications*.....Vicki Schmid  
*Secretary*.....Leona Schroeder  
*Treasurer*.....Bob Tripp

As recommended by the Nominating Committee:

Bob Olsen, Chairman

Shirley Andries, Hank Faulkner, Harry Gaston, Bruce Maughs, Susan Rehder, Gene Turboff

*The above slate of nominees was selected on the following criteria (not necessarily in order of importance): 1) Time available; 2) Business experience; 3) Previous contributions; 4) Creativity; 5) Enthusiasm ... active participation in Club and related activities; 6) Accessibility ... location in Houston vicinity; 7) Stability ... risk of relocation; 8) Balance ... male/female; and 9) Team work -complementary leaders.*

*In addition to the above, the Nominating Committee considered the following special criteria for each office: President - run meetings, public relations, previous office held; Programs - creativity, find and develop new leaders; Trips - run meetings, organize, negotiate; Membership - organize, phone access, handle details; Publications - organize, write, creativity; Secretary - communication skills; Treasurer - business sense - head off problems, budget, etc.*



## TAKE-A-CHANCE PARTY

**WIN A \$537 ROUND-TRIP TO LAS VEGAS**

**WHEN:** Friday, February 22, 7 o'clock 'til midnight (flight leaves at 9:10 p.m.)

**WHERE:** Bald Eagle Bar, 4503 Ivanhoe

**BRING:** Suitcase packed for weekend in Las Vegas in case you win.

**COST:** \$27.50 per Couple.

- You don't have to be a couple to sign up — find a friend later!

**INCLUDES:** Airfare, hotel (2 nights), taxi to/from Las Vegas airport.

**ONLY ONE WINNER - LEAVE FRIDAY NIGHT — RETURN ON SUNDAY**

**25 Couple Minimum / 35 Couple Maximum**

**SIGN UP AT THE JANUARY MEETING**

Make checks payable to SPACE CITY SKI CLUB and send to:

**MARTY MATRAS**

**5856 Village Forest Ct. - Houston, Texas 77092 - Office 651-9918 - Home 681-9315**

NAME: \_\_\_\_\_

ADDRESS: \_\_\_\_\_ Apt. No. \_\_\_\_\_

CITY \_\_\_\_\_ STATE \_\_\_\_\_ ZIP \_\_\_\_\_

PHONE NUMBER: (Home) \_\_\_\_\_ (Office) \_\_\_\_\_

AMOUNT ENCLOSED: \$ \_\_\_\_\_



# TEXAS SKI WEEK - I

by Graham Barnes and Tania Andrasko

The story line is: "We went to Winter Park to win the TEXAS CUP for the third consecutive time." Not to keep you in suspense, we did just that! But there is a lot more to the story.

When we finally left Intercontinental Airport on Sunday morning, we left **Bill Blackstone** behind. It took a couple of days for the rest of us to find out that Bill was in the hospital. It seems that Bill was so anxious for a medal that he had been breaking in a new pair of boots all week. On the way to the airport, his legs became so painful and numb that a stop in an Emergency Room led to a diagnosis of phlebitis.

Then there was **Theresa Sweeris** who arrived at the airport on crutches. Backwards you think? **Barry Kumins** tried to help her get to the plane by giving her wheelchair a gentle shove down the ramp to the airplane. Let Theresa tell you how fast you can go!

**Jerry Pyle** came to the airport to deliver **Glenn Bishop** and **Tracy Fairbanks** and stayed until we left, helping to check the participant list. Jerry seemed as excited as the rest of us about the trip; he was also there when we returned. Some of us were so used to seeing him that we wondered what happened to him in Winter Park.

Our race chairman, **Bob Marwin**, worked so hard to get our race efforts together! You know how we all got hassled to fill out NASTAR cards? Guess who forgot to fill one out (ditto his new wife **Fran**) until the plane was just outside Denver!

Finally we got to Denver and were slowly being taken to our luggage and buses at a remote hanger. But, **Katy Terzakis** was in a hurry and went directly to the Continental luggage area. Thanks to **Ray Tully**, we rescued that cute piece of nearly lost luggage.

In Denver, we were joined by **Alan Cooper** from New York and **Blair Caviness** from Washington, D.C. These two SCSCers are super skiers and great additions to the team. Thanks to **John Hargleroad** we did not have to haul the beer from Houston to Denver. (You know the Colorado Liquor laws on Sunday.) Thanks John -- that was more snow and a longer ride to Winter

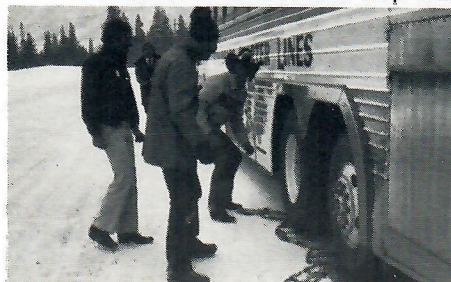


THE TEXAS CUP - NUMBER ONE!

## 1980 TEXAS SKI WEEK CUP RACE RESULTS

CLUB	Points	Place
Space City Ski Club	1432	1st
Alpine Ski Club	932	2nd
University of Texas	807	3rd
Mountain People	768	
Austin Skiers	624	
San Antonio Ski Club	602	
*Flatland Ski Club	525	1st
*Heart of Texas Skiers	512	2nd
Houston Ski Club	462	
*Clear Lake Area Ski Club	301	3rd
*Los Amigos Ski Club	188	
*Mountain Ski Club	147	
*Ullr Ski Club	94	
*Small Club		

Park than most of us had hoped. The beer really helped "warm" **Ron Honefenger**, **Wylie Weeks**, **Pete Bauman**, **Art Camero**, **Ray Tully**, and others after adding those cold chains to the bus tires. The Denver bus stop was



Ron Honefenger, Art Amero, and Ray Tully ready to assist the bus driver put on the chains

further complicated by **Marilyn Vernon's** infamous lost luggage ... that would finally arrive in Winter Park a couple of days later.

In Winter Park we were joined by a number of additional SCSCers. **Rocky Schwartz** had loaded his plane Friday with **Jim Plummer**, **Bob Fried**, and **Harry Gaston** and headed for Denver to get a head start on the rest of us. Understand you all had a nice dinner (4 Twinkies) in Amarillo.

**Joe and Debbie Assad** also left Houston early to get in some additional skiing. **George Hirasaki** joined the rest of us via Los Angeles. And, **Steve Van Pelt** began another Houston exodus to the mountains, by car, Saturday morning. This was a welcome stroke of luck for the assistant for the short TSW, **Ellie Stern**, who had a hole in her head and could not fly.

Monday we discover the "fantastic" transportation that Winter Park had promised Texas Ski Council for Texas Ski Week. Regardless, the snow all week was among the best most of us had ever skied ... truly fantastic!



Early week practice runs bring together **Richard Severence**, **Keith Eastin**, **Steve Van Pelt**, **Barry Kumins**, **Shirley Andries**, **Jim Benefield**, and **Alan Cooper**.

Tuesday saw our first blizzard since Sunday. **Carol Ragan**, **Charles Dutton** and **Theresa Sweeris** decided the snow really wasn't all that fantastic and spent the day savoring the odor of the jacuzzi. They probably should patent that water ... Theresa skied thereafter. **Fran Marwin** also had a miraculous recovery from a sore back ... Bob, how did that happen?

**Bill Armstrong** always comes prepared for the slopes, he brought his entire pharmacy along!

(continued on page 12)



# TEXAS SKI WEEK - II

## WINTER PARK ... Were you really ready for all us Texans?

by Ellie Stern

Our trip got off to a bad start with **Ellie Stern's** ruptured eardrum and **Lynn Burch's** sprained ankle. Lynn took her ankle in stride by killing her pain in the airport bar before take-off. **B. J. Williams**, complete with Texan hat and boots kept her company. Continental Airlines took care of the whole group, going and coming back - with the Texas Cup for the third year in a row.

Unfortunately most of our short trip missed the combined party with the TSW I group. So **Nancy Miller**, **Charles Seaton**, and **Layne Kebodeaux**, along with several others, headed for the Swiss Fondue House for dinner. We are not sure where **Phil Larson** or **Judy Swasey** went.

We are sorry **Brant Williams** couldn't have stayed with us longer - maybe next year.

Bright and early Thursday morning most of us got ready for the first day of skiing. What a treat we had in store - a blizzard and long waits for buses to get anywhere in Winter Park.

Most skiers went to Winter Park or Mary Jane, but **Jo Anne Weaver** and **Ellie Stern** went to Idlewild. Could it be they enjoyed their instructor and those private lessons? By the way, both made it off the chairlift by the end of the trip.

**Roger Williams** thought he would have a normal ride up the chairlift with his wife **Monica** ... Wrong!! Monica (being a beginner skier) had heard of "mogul mice" and "snowsnakes", but she had also heard from the expert skiers on the trip that they had been having trouble with "Those Dirty Moguls". So Monica, not one to be caught unprepared, "borrowed" a broom from the lift operator on the way up so she could ski on clean ones ... and the sight of her riding up the chairlift on a broom caused people standing in line below to exclaim, "It's a bird, it's a plane ... no! It's a witch!"

Thursday night was a night for surprises. A party was given for the Texas Ski Council clubs, with a lot of drinking and country music. Have you ever tried doing the Cotton-Eyed Joe in snowboots on carpet? But we had fun.

**Joyce and Spencer King**, **Roger and Monica Williams**, **Charlie Goodrich**, and **Morris Webre** missed the party. It seems a snowbank ran into their car.

**Leslie Holmes** lost her pajamas. Where did they go? After all, you were rooming with three guys!

**Jerria Poe's** fiance of four days came to visit.

**Kay Nettles** enjoyed her first ski club trip. She thinks the theme song for the trip should be "Boogie; Boogie, Boogie." Kay, why did you and **Joe Brothers** wake up **George Sanford** at 2:00 a.m.? Did you think your Trip Chairman was going to give you any added information?

Of course no one will tell who went knocking on doors at 5:00 a.m. for a "Black Glove."

Friday morning was another great day for skiing and racing - Cup Race Day. After a good day of racing you could see most of our group enjoying the wine and cheese party at the bottom of the course. Ask **Jay Laviolette**, **Joan Brooks** or **Steve Lavoot** about the races.



**Luv ya (SCSC) Blue! Randy White, Cliff Zapfel, Bev and Jim Benefield, and Ellie Stern awaiting the presentaiton.**

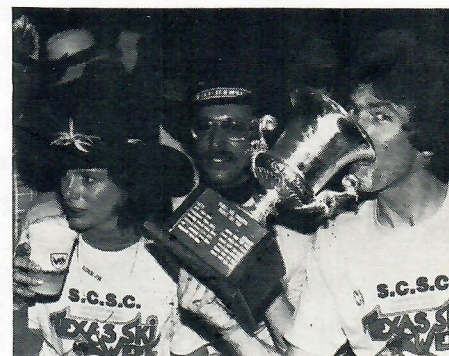
Friday night another party was given for all the clubs. It looked like Oiler Blue Night in the Dome, except it was SCSC Blue at Mary Jane Center. Everyone from both trips (minus a few - you know who you are), wore the T-shirts especially designed for our Space City Winter Park trip. It looked terrific. It was even more exciting when they announced we were the winners of the Texas Cup.

Saturday was filled with more great snow and skiing. That night we had a fun party in **Ellie Stern's** condo. After the party Major Bull Shot's was the location that most people went for their last night's fling. **Marilyn Andrews** and **John Vetter**, **Lynn Burch**, **Chris Richardson**, and **Randy Parker** were a few of the Major's visitors. (Thanks Randy, for the luggage room. You looked so cute sleeping; sorry we had to wake you.)

Sunday brought last minute packing, late sleepers, and some morning skiing before heading back to Houston. We had two of the "Blues Brothers" from the long trip return on the bus with us. We wonder why? Thanks Buck (**Gary Sligar**) and Billy-Bob (**Joe Armstrong**) for tending bar. **Jim Keatts** and **Janet Nelson**, along with **Jill** and **Janet Legler** were just a part of the patrons of the "Blue's Bar". The Brothers made a mean drink and helped make the ride from Winter Park to Denver very enjoyable.

The plane ride home brought some excitement before take-off. The Continental pilot told **Ellie Stern** she had to leave the plane because of her ear condition, but after a long discussion with **Jim Keatts** he was persuaded to let her stay on. (Thanks, Doc.)

It was hellacious going back to work after such a great trip. We're ready for next year's Texas Ski Week and another win for Space City!!



**Theresa Sweeris, Barry Kumins, and Gary (Buck) Sligar joining in the celebration of yet another SCSC victory.**



# "I never knew so many vaca I went nuts."



"Thanks to Peanuts Fares, I can roast in Cancun or Cozumel without getting burned. I can blow more money in Vegas and less on getting there. I can dance up a storm in Mexico City or Guadalajara. Or glide down the slopes in Denver.

My Peanuts Fares have saved people \$85 million. Which means you can probably afford a lot more vacations too. You can fly to any of these fun spots right from Houston.

Sample Peanuts Fares and Savings	Denver		Las Vegas		Cancun		Guadalajara	
	Peanuts Fare	% savings on round trip coach	Peanuts Fare	% savings on round trip coach	Peanuts Fare	% savings on round trip coach	Peanuts Fare	% savings on round trip coach
Houston	\$69	48%	\$79	56%	\$61	30%	\$62	30%

Or you can catch a

Peanuts Fares are available on select flights. Las Vegas and Denver fares are effective February 1, 1980 and are each



# I could afford tions until

-Capt. Peanut

*Came out of my shell in Mexico.*



*Became a ski nut in Denver.*



convenient flight from lots of our other cities.

If you have any questions, call your professional travel agent. Or call us at 800-392-6838.

Believe me, you'll have more fun if you go nuts."

## Texas International

© 1980 Texas International Airlines, Inc.

We believe man was meant to fly for peanuts.

way with round trip purchase. Mexico fares are effective February 18, 1980 or sooner. All fares are subject to change.



(Continued from page 4)

the fluttering row of national flags and the brightly colored racing suits of the skiers.

### **Mt. Van Hoevenberg Biathlon**

In biathlon, athletes ski in 10 kilometers, 20 kilometers and a 4 by 7.5 kilometer relay, and, at intervals, shoot 22 caliber rifles at the targets in the firing range. The biathlon course was first used in 1975-76. Last year it was used for Pre-Games events. This particular course covers 16 kilometers of trails with 36 targets, 50 meters from firing line to target. I personally think that some of the biathlon tracks are more interesting skiing than the XC tracts proper. The feel at the firing range is incredible. The addition of the shooting punctuates the sedate suspense of an XC race with short electric flashes of high speed action.

### **Mt. Van Hoevenberg Bobrun**

The Mt. Van Hoevenberg bobrun was built in 1930 for the 1932 Olympic Winter Games. It was originally a mile and a half long, but was shortened to its present length of 1,557 meters in 1936 for safety reasons. The run has been rebuilt and refrigerated for the 1980 Games. Its vertical drop is 148 meters, with an average grade of 9.5 percent, and includes 16 curves. It is the only mile-long refrigerated tract in the world.

### **Mt. Van Hoevenberg Luge Run**

The luge run is the newest of the facilities in Lake Placid. Its dimensions closely follow those of a modified bobsled, measuring 1,000 meters in length, with a vertical drop of 93.3 meters and an average grade of 9.3 percent, and 15 curves. Luge was first introduced in the United States in 1961 when Baron Von Felz-Fein made a descent off the Mt. Van Hoevenberg bobsled on a luge sled. The luge run is the only one in the Western Hemisphere, and Mt. Van Hoevenberg is the only site in the world with a luge run and bobsled side by side. Unlike ski jumping, which I have done and find to be more beautiful than terrifying, bobsled and luge are terrifying. The runs are shorter than they appear on television. Nearly the whole thing can be seen from a couple of advantageous locations, and spectators can get really close to the action. What TV also doesn't show is the ambulances sitting with motor running at two of the major turns.

### **Olympic Center**

The Olympic Center consists of three new buildings, plus the 1932 Olympic Arena. Within this complex there are four ice sheets: two international size (30 meters by 60 meters), one U.S. size (85 feet by 200 feet), and

a practice rink, the Gustave Lussi rink (125 by 80 feet). During the 1980 Games, compulsory figures will be held on the U.S. rink, free skating will be held in the Main Building, which seats 8,500, and ice hockey will be held in the old Arena and the new Ice Center. The new building is a beautiful, comfortable modern arena with a lot of upholstered seats, good sight lines and not much character. In other words, the architecture is standard arena anonymous. It has two virtues; it's ready, and it will do the job. The Arena was built for the 1932 Olympic Winter Games. It was the first time an indoor rink was used in the Olympics. Sonja Henie, the Norwegian figure skater, won her second of three Olympic gold medals in the Arena. As opposed to the newer facility, it is uncomfortable, small (seating only 1,200), and worn out, but it oozes history. You expect Sonja Henie to appear at any moment.

### **Whiteface Mountain Ski Center**

Whiteface Mountain is 4,867 feet high, hosting the longest vertical drop in the eastern United States of 3,216 feet. The first trail was cut on Whiteface in 1938, by a crew of volunteers led by Ron MacKenzie, the late president of the LPOOC. It was not until 20 years later, however, that the present Whiteface Mountain Ski Center was

# **scsc '79-'80 ski trips**

TRIP	TRIP DATES	COST	TRIP CHAIRPERSONS AND ASSISTANTS	HOME PH.	OFFICE PH.
<b>Taos</b>	Feb. 14	\$239.00	TC Bob Marwin	772-4039	664-6704
	Feb. 20		ATC Sue Bohnert	467-5027	869-9371
<b>Telluride</b>	Mar. 1	\$425.00	TC Carol Ragan	497-1183	
	Mar. 8		ATC David Walter	784-1092	840-2487
<b>Copper Mountain</b>	Mar. 9	\$390.00	TC James Weiskopf	931-0385	
	Mar. 16		ATC Beverly Fecel	995-7270	789-8000
<b>Aspen II</b>	Mar. 15	\$484.00	TC Dave Reitze	781-2957	656-4908
	Mar. 22		ATC Linda Steele	528-6402	961-5755
<b>Vail II</b>	Mar. 29	\$429.00	TC Leona Schroeder	468-4609	
	Apr. 5		ATC Alan Bitzer	729-1652	497-0723
<b>Park City</b> Spring Fling	Apr. 5	\$340.00	TC Jan Livingston	723-1331	961-2425
	Apr. 12		ATC Art Camero	664-6253	662-3000

**VICE PRESIDENT OF TRIPS - EASY THAYER - (H) 499-2294**

### **TRIP DIRECTORS**

**Joe Cotrone (H) 729-0585 / (O) 654-1212**

**Anne Benefield (H) 780-4019 / (O) 241-2387**



opened. There are now 28 trails, the highest beginning at 4,436 feet, nine lifts, and three lodges. The 6,420 foot quad lift can handle 2,000 skiers per hour. The base lodge has an area of 38,000 square feet, and is capable of serving 4,000 people per day. Testing of the Olympic facilities began in 1978, with the U.S. National Alpine Championships. Last winter the U.S. National Downhill Championships, and World Cup events in men's and women's downhill and men's giant slalom were held at Whiteface. In the event of insufficient snow, the new snowmaking system can cover the entire network of Olympic trails with an inch of snow per hour. The 6,200 feet of safety netting makes it the most extensive safety net system in the world. The sneaky little fact that none of the news reports or Games brochures tell you about Whiteface is that spectators have to walk up without skis and none of the finish lines are at the bottom. The base lodge is very large, but spectators will only get to use it after they come down off the hill, which may make for a problem. This is a big, spectacular mountain, and the person who gets to the right place will really have an experience.

#### 70 and 90 Meter Ski Jumps

Intervale has been the site of ski jumps since the early 1920's when Gustave Lussi founded the site and Godfrey Dewey designed a jump for the site. In 1932, a 60-meter jump there was used for the III Olympic Winter Games. The hill was re-built in 1970 for the World Championships. The new 70-meter and 90-meter jumps were used last winter for local, international, and Pre-Games competitions. 70-meters and 90-meters does not refer to the height of the towers; it refers to the distance in the air a good jumper will soar. The maximum safe jump on the 70-meter hill is 86 meters; the maximum safe jump on the 90-meter hill is 114 meters. The record for the 70-meter hill is 92 meters, while the 90-meter record is 115 meters. Places are determined by adding the distance jumped plus style points awarded by three of five judges (the high and low scores are discarded). Most people consider the 90-meter jump to be the climactic moment of the Winter Olympic Games, and I agree. The jumping hills have to be seen to be believed. The

stats say that the 90-meter jump is 257 feet tall (the tallest structure between Albany and Montreal). That is above the ground at its base, which is another 250 feet above the bottom of the landing hill where the spectators are. The structures themselves are elegant and awe inspiring. I wish I were still jumping and that I were good enough (which I never was) to jump hills like that. They are fantastic athletic facilities. Relative to world class facilities in each of the disciplines, the jumps are the best venue in Lake Placid.

Perhaps your viewing pleasure will be enhanced by this additional information on what, where, and how. Check your TV schedule for coverage of all the Olympic events beginning on February 12.

## CITY LEAGUE SOFTBALL



**Men's and Women's Leagues**  
**\$15 per Person**

**Sign up at Febraury Meeting**

**For additional information call:**

**JERRY PYLE**

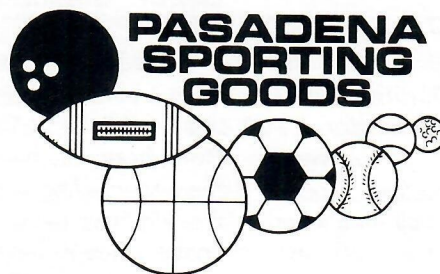
**(O) 661-2859**

**(H) 721-7035**

## Clothing For Rent



That's right. We rent  
as well as sell top  
quality ski clothing.  
So if you're in the  
market to buy your  
own or to rent our  
ski clothing— come  
in and see the  
experts.



**WESTHEIMER**  
9715 Westheimer  
(Corner of  
Westheimer & Gessner)  
**785-6722**

**SOUTHWEST**  
11807 Wilcrest  
(FM 1092 at Southwest Frwy.)  
Next To Randall's  
**498-1313**

**PASADENA**  
Corner South Shaver  
And  
Highway 225  
**477-7151**



(continued from page 6)

That evening, **Tania Andrasko** put together our third party in as many days (wine and cheese this time). This one preceded a new kind of excitement. A lot of us thought large inner tubes were only used on trucks and the Guadalupe River. Tania found a new, exciting idea ... try a snow covered hill. Also seems that some idiot bet a lot of people they could not make their first run down the hill without falling off their tubes.

The tubing hill presented **Joe Assad** with an excellent opportunity to use his movie camera. **Debbie Assad** and her tubing hill performance were to be the highlight of the show. Unfortunately, "director" Joe was later to find the batteries malfunctioned. Still, it was a good show for those of us present.

The tubing hill provided **Merlyn Harger** an opportunity to don his Cosack hat and boots and ride his trusty tube against the SCSC Mongol Hordes. Even the bus driver got into the act. **Richard Maxwell** had so much fun he was almost left, but "black hat turned white" **Ken Moredock** let us know Richard had gone down "just one more time". Finally, **Pat McLaughlan** was heard to comment that he thought tubing was more fun than skiing.

Later that evening **Steve Van Pelt** treated some of us to a terrific spaghetti dinner. Meanwhile, **Tracy Fairbanks**, **Ray Tully**, and others tried to go dancing, but it seems young Tracy forgot to bring along the papers necessary to prove her age. Again Ray raced to the assistance of a lady in distress. (Remember Denver?) But this time fate frowned on our knight; it seems that neither one of them got to go dancing at that place. Since Tracy has now moved to Los Angeles, you can get the rest of the story from Ray. Tracy - good luck in L.A. Hope we see you back in Houston again soon.

**Hazel Higgins**, **Zoe Bunch**, and **Mary Pratt** had never skied before the trip. By Wednesday, **Dorothy Symonds** and **Donna Berglund** (the experienced skiers of the group) were dragging them to intermediate slopes and bragging about how well they were doing. Some of the other less experienced skiers were getting occasional helpful hints. **Don Lackey** suggested **Janet Holt** could break a counter-rotation problem by keeping her "tips" pointed down the hill. **Randy White**

thought someone should knock down the moguls, but **Barbara Roberts** thought they were fun.

**Pat McLaughlan**, **Theresa Sweeris**, **Mike Kowis**, **Tania Andrasko**, **Art Camero**, and **Ike Hoffmantook** a racing clinic Wednesday morning. After watching a couple of their initial attempts, the instructor opted that they were either "advanced beginners" or "beginning intermediates" whereupon he started to teach them stem christie turns. This was a real ego trip for our group -- considering that **Pat McLaughlan** has been skiing for over twenty years.



*The sun at last! Brings smiles from Cliff Zapsfel, Graham Barnes, Keith Eastin, Sy Liebergot, Tania Andrasko, Bob Marwin, and Art Camero.*

While these fortunate few were learning a new way to ski, the rest of us were enjoying our first day with any sun. **Lee Bollinger** and **Jim Guild** pushed **Pete Bauman** all day. But **Paul Welchel** still looked the most exhausted by evening.

**Shirley Andries** was really skiing aggressively on Wednesday -- was this the result of a chauvinistic comment from **Keith Eastin**?

By Wednesday evening, **Wylie Weeks** had convinced a friend to come up from Houston. Possibly **Cliff Zapsfel** should take lessons - but we are sure **Lanette Shepherd** appreciated the calls.

Wednesday evening we were to have a combined party with the incoming "short trip". While waiting, **Jeri Rotenberg** was heard to comment that the wait was like waiting to give birth but the kid was never coming. They did finally arrive to help finish the party.

Thanks to **Jane Shinn** for checking guests into the party. And a special thanks to **Bev Benefield** for helping Tania cut up all those munchies everyone devoured so quickly. **Roy**

**Caviness** and **Ike Hoffman** left the party too early. You missed three of the cutest girls from the slopes. They came by the party looking specifically for both of you!

The Blues Brothers -- **Gary Sligar (Buck)**, **Joe Armstrong (Billy Bob)**, **Steve Hopson (Elwood)**, and **Rale Gideon (Jake)** -- spent lots of time "tending" the bars at the parties and enjoyed closing down most of them.

The evening ended with **Ray Hodge** riding the bus from town to the slope and back a couple of times. Finally, the bus driver decided Ray did not know where he was going and asked if he could help, only to find Ray "asleep".

Late that night **Graham Barnes** and **Jim Benefield** went to the individual racers' condos to discuss the race set for the next afternoon. In the famous condo housing Gaston, Fried, Plummer, and Schwartz, we noted the overpowering smell of Ben Gay. It appears that they have discovered a new "Grecian" formula. A visit to another condo found contestant **Dale Allbritton** recovered from altitude sickness and lancing a protruding extremity.

Our sincere wishes and thoughts were with **Marilyn Ward** when she had to quickly return to Houston Thursday morning due to an illness in the family. We missed you, Marilyn.

Thursday was the day of the individual races, more race clinics, racing against fellow SCSCers on the course for the next day's CUP race -- and all in a white-out snow storm. None of our individual racers placed, but **Barry Kumins** had the best time among the SCSC male racers; **Katie Terzakis**, as the "token female", had the best time for the SCSC female racers.

While practicing Thursday morning, **Bev Benefield** was to take a nasty fall, conk her head, and remain dizzy for awhile. Later that day **Jim Benefield** also took a header on the race course and came up looking like a snowman. Some couples have to do everything alike!

**Derek Hankins** is so tall and thin we lost him in the snowstorm on Thursday morning and didn't find him until time for the Friday races.

Parts of the 1980 Texas Ski Week movie were being shot during the week. **Charles Dutton** and **Ruth Roy** have starring roles. Their "star's clothes"



made them difficult to recognize on the slopes. They both found out being a movie star doesn't allow much time for skiing!

The duel practice course provided one contest that was interesting to a University of Colorado seismic crew - **Bob Marwin** versus **Steve Van Pelt**. In deference to the loser, the winner's name will be withheld.

Thursday night brought the first "BIG PARTY" for all the Texas ski clubs. We found out a lot about the bravery of certain bus drivers that night -- only a few were willing to drive the steep road to the Mary Jane Center in a Blizzard so how did 1,000 crazy Texas skiers get there and have all that fun? Maybe they were hoping to get snow-bound with all those other warm bodies? **Rudy Naquin** and **Donna Berglund** had so much fun dancing the night away that they never knew there was a blizzard!

**Carl and Lotty Gautschi** surprised **Sy Liebergot** with an appropriate wine the night he and **Jim Benefield** cooked his champion Buffalo Snort Chili.

**Hilton Weiner** is our new "hero" image! The new way to treat second day snow bunnies is to take them to the top of the mountain and accidentally lose them. We understand **Jo Anne Weaver** (from the short trip) will forgive you during dinner at Tony's.

Friday was the TEXAS CUP RACE day and the sun was shining! As you already know, SCSC owns the cup for the third consecutive time. The NASTAR course was relatively simple --so much so that it was difficult to obtain many good times (except an unbelievable time by the "hot dog" pacesetter!) Medal times were turned in by **Harry Gaston** - Silver; and **George Hirasaki**, **Glenn Reiger**, **Bob Fried**,

**Bernd Schlickeiser**, **John Terzakis**, **Dale Allbritton**, **Merlyn Harger**, **Sy Liebergot**, **Katie Terzakis**, **Bob Marwin**, **Steve Van Pelt**, **Bob Copple**, and **Bob McAnelly** - Bronze. **Robert Scott** was so anxious to get a medal he spent a lot of time warming up on the upper slopes. As a result he missed his race turn and had to race last.

For the race, we were joined by another group composed of SCSC'ers **Bob Olsen**, **Bob Allgeier**, **Bill Brooks**, **Donna Brooks**, **David Marrack**, and **Grant Krause**.

A couple of additional costumes showed up at the races. **George Hirasaki** made his run with a cape that resembled the rising sun - Kamikazes again? **Tim Mock** wore his "Comanche warmups" - only the headdress was missing. **John Gay** wore a blue denim cowboy hat with ear muffs.



**Barry Kumins leads off with George "Kamikaze" Hirasaki, Jim Plummer, Sy Liebergot, Bob Fried, Bernd Schlickeiser, John dTerzakis, and Lee Bollinger lined up to follow.**

**Linda MacFarland** left for Aspen on Saturday for another week of skiing. Understand it rained over there!

Saturday saw half the Denver population in Winter Park. Just in case there were not enough bodies on the slopes, Mother Nature threw in a super snow storm just for good measure. There was again a NASTAR -- this time open to everyone. Would you believe **George Hirasaki** was second only to the pacesetter. George and **Blair Caviness** earned silver medals this day. Bronze medals went to **Rocky Schwartz**, **Jim Plummer**, **Katie Terzakis** and **Merlyn Harger**.

And what happened to **Richard Severence** at the Attic Restaurant Saturday night? Is there some relationship between older women, waiters, and buns?

On Sunday, most of us boarded buses for the return trip to Denver. **Tania Andrasko** and **Sy Liebergot**

were left to be sure the buses were unloaded and the rest of us went to the plane. Over an hour later, the plane was ready to leave and the ramp was being moved away -- but wait -- where are Tania, Sy, and the luggage -- would you believe they were still on the buses waiting for the luggage to be unloaded? Finally in the air, we had one last celebration, thanks to the champagne from the Continental staff.

If you don't think **Pete Bauman** skied hard, we hope you saw his skis at the Monday SCSC meeting in Houston.

**Richard Phillips**, **Martha Phillips**, **Michael Neff**, **Mary Neff**, **Lloyd Hanks** and **Debbie Hanks** all managed to avoid controversy.

**Glenn Rieger** and **Sherra Miller** enjoyed the trip so much they decided to take another trip -- to the altar.

BE  
PHYSICALLY  
FIT



## SPACE CITY RACQUETBALL ROSTER

	Office	Home
Jim Baker	923-2775	721-2993
Glenn Bishop	662-3132	729-0065
Allen Bitzer	476-3738	729-1652
Sue Bohnert	869-9371	467-5027
Joan Brooks	658-9803	782-7136
Terry Brock	663-2116	977-3428
Annicc Butler	527-9561	862-9699
Ken Catherman	869-9371	686-8428
Warren Cross	666-4224	665-6933
Jay Laviolette	961-7330	681-2377
Marty Matras	651-9918	681-9315
Tom Mercer	663-2137	772-4039
Don Pretsman	669-8282	782-9208
Pat Tiffany	840-3951	496-5474
Christina Villarreal	522-1051	748-2245
James Weiskopf		931-0385
Peggy Widaman	978-2501	981-0330

For information contact:

**JAMES WEISKOPF**

7714 Ashmole

Housotn, Texas 77088

(H) (O) 931-0385

**(Tournament to be scheduled in March.)**




**Racers ready and off -- Carol Ragan and Jerria Poe show how it's done.**



# SPRING SKI SEASON

# OSHMAN'S®



**FAMOUS BRAND  
PRICE BREAK SALE**

**Entire Stock**

**79-80 Models**

**SKIS, BOOTS  
BINDINGS  
ACCESSORIES**

**Men's & Ladies'  
Ski Apparel**

**Visit One  
Of Our 4  
Ski Centers!**

- POST OAK
- SHARPSTOWN
- ALMEDA SQUARE
- CHAMPION FOREST

**Oshman's Ski Skool**  
**At Post Oak Call 961-1356**  
**For Lessons and Deck Time**



# Re:MARKES



**BY AND  
ABOUT  
OUR  
PEOPLE**

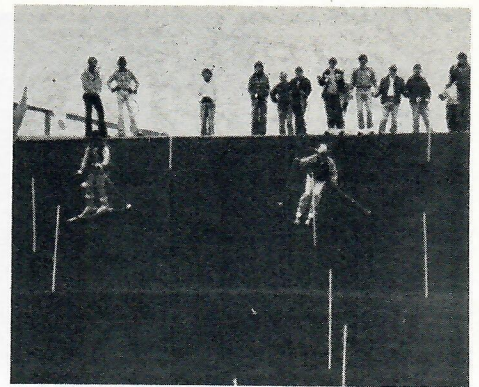
Last month a group of Space City Ski Club skiers that included **Tom Mercer, Tim Mock, Marty Matras, Beth Nolen, Jane Shinn, Ray Tully, Sy Liebergot, Tania Andrasko, Dave Reitze, Jerry Pyle, Pam Perry, Bob Marwin, Steve Gucker, Tracy Fairbanks, Easy and Karol Thayer, Mary Kay Nicholson, Bob McAnelly** and **Dave Marrack** helped inaugurate "The Mountain" located at the 610 Loop and Southwest Freeway.

In conjunction with KIKK Radio and the Muscular Dystrophy Association, SCSCers volunteered their talents in a promotional demonstration of dryland skiing to kick off M.D. Day at The Mountain. A per person cover charge and concession proceeds for the all-day affair were donated to M.D.

A dual slalom race course of six



**LEFT:** Bob Marwin drums up enthusiasm in Ray Tully, Charles Doty, Tania Andrasko, Pam Perry, and Marty Matras. **RIGHT:** This is the way its done at The Mountain, SCSC style. Ly Liebergot and Easy Thayer are neck and neck at the second gate.



(count'em, six) gates each were set up to allow SCSCers to "warm up" for the upcoming Texas Ski Week, and V.P. of Programs, **Tom Mercer** conducted races accordingly. Understandably, it was a bit difficult to get in the mood while viewing the city through a misting rain at 65°F.

SCSC member **Mary Pratt** sends out a plea for help to all civic-minded skiers. She has been appointed to the Steering Committee as Sales Promotion Chairman for the Institute for International Education, Inc. (IIE) and needs volunteers to help contact some 7,500

people who will be invited to participate in the Norwegian Festival to be held during March and April, when the honored country will share their culture with us. The Sales Promotion Committee is responsible for selling tickets to the Benefit Dinner to be held at the Hyatt Regency on April 25.

The IIE is an international organization that promotes the exchange of foreign students, provides assistance and extends hospitality to international visitors and people choosing America as their new home. Please call Mary at 629-1520 (O) or 465-6973 (H) for further information.



**(PIZZA,  
TOO)**

★  
2633 Winrock at Westheimer  
780-4505

★  
211 West FM 1960 at I-45  
440-0341

★  
901 Town & Country Blvd.  
464-8629

★  
4855 West F.M. 1960 at Champions  
440-4982







# SPRING SKI SPECIALS

## SKI EQUIPMENT

A complete ski system includes skis, boots & bindings. Purchase at least 2 components at our sale price and we'll mount your bindings **FREE**. Purchase either skis or bindings at our sale price and we'll mount your bindings for \$7.50 (50% off the regular \$15. charge). Purchase all 3 components of the system and we'll throw in your choice of ski poles, **FREE!**

DOWNHILL SKIS	REG.	SALE
Rossignol Haute Route	188.00	<b>150.00</b>
Rossignol SM	240.00	<b>192.00</b>
Rossignol Strato	195.00	<b>156.00</b>
Rossignol ST	225.00	<b>180.00</b>
Rossignol CM	215.00	<b>172.00</b>
Rossignol Snowbird	185.00	<b>148.00</b>
Olin Mark VII	275.00	<b>220.00</b>
Olin Mark V	225.00	<b>180.00</b>
Olin Mark IV Comp	235.00	<b>188.00</b>
Olin Mark IV	215.00	<b>172.00</b>
Olin Mark III S	235.00	<b>188.00</b>
Olin Mark III	215.00	<b>172.00</b>
Olin Mark II	190.00	<b>152.00</b>

BINDINGS	REG.	SALE
Salomon 727	109.95	<b>87.50</b>
Salomon 626	84.95	<b>67.50</b>
Salomon 444	77.95	<b>62.50</b>
Look N77	129.95	<b>103.50</b>
Look N37	89.95	<b>71.50</b>
Look N57	100.00	<b>80.00</b>
Geze Olymp SE	129.95	<b>103.50</b>
Geze Olymp L	114.95	<b>91.50</b>
Geze GC 35	90.95	<b>72.50</b>

SKI BOOTS	REG.	SALE
Nordica Competition	240.00	<b>192.00</b>
Nordica Hurricane	180.00	<b>144.00</b>
Nordica Cosmos	130.00	<b>104.00</b>
Nordica Zephyr	170.00	<b>136.00</b>
Nordica Scirocco	200.00	<b>160.00</b>
Garment Omnilite	180.00	<b>144.00</b>
Garment Diamond	200.00	<b>160.00</b>
Garment Gara	210.00	<b>168.00</b>

## SKI CLOTHING

	REG.	SALE
Underwear	4.50 to 11.90	<b>3.50 to 10.00</b>
Lady's Bibs	28.00 to 76.00	<b>22.50 to 60.00</b>
Lady's Suits	110.00 to 150.00	<b>88.00 to 120.00</b>
Lady's Parkas	36.00 to 125.00	<b>28.50 to 100.00</b>
Lady's Vests	46.00 to 85.00	<b>36.50 to 68.00</b>
Lady's Sweaters	22.00 to 50.00	<b>17.50 to 40.00</b>
Men's Bibs	28.00 to 159.00	<b>22.50 to 127.50</b>
Men's Suits	120.00 to 158.00	<b>96.00 to 126.50</b>
Men's Parkas	60.00 to 120.00	<b>48.00 to 96.00</b>
Men's Sweaters	35.00 to 65.00	<b>28.00 to 52.00</b>

Saturday, Feb. 9 - Saturday, Feb. 16



**WESTBURY SQUARE**

Monday through Saturday, 11AM to 9PM

**721-1530**

**TOWN & COUNTRY VILLAGE**

Mon. through Fri., 10 AM to 9PM; Sat. 10 AM to 5 PM

**461-3550**