



The

# *Sitzmarke*

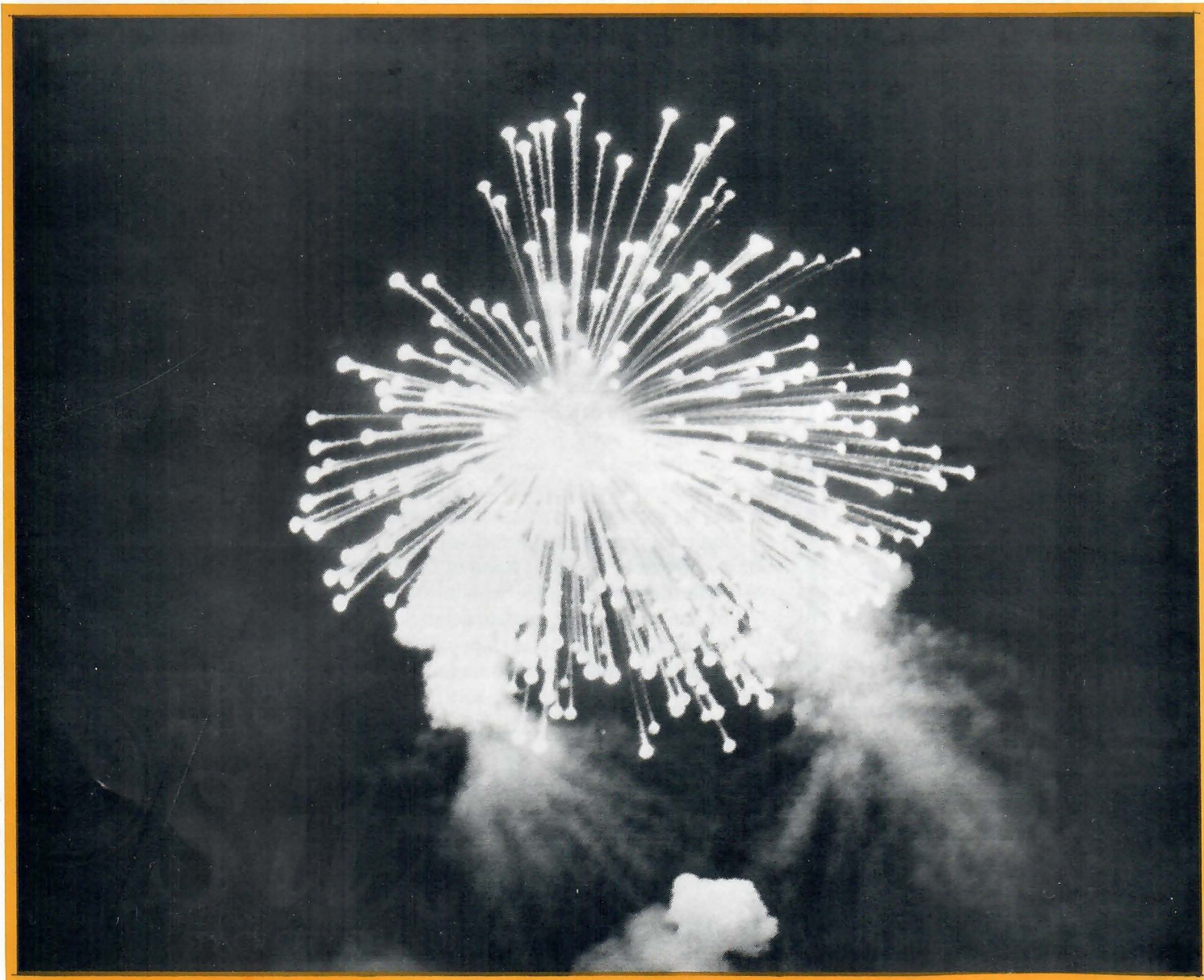
SPACE CITY SKI CLUB

JULY, 1991



MEMBER  
Texas Ski  
Council

Vol. 24, No. 3



***WHAT ARE ALL THE FIREWORKS ABOUT?***  
**THE NEW 1991-1992 SKI TRIP SCHEDULE - Page 5**





## SPACE CITY SKI CLUB

### 1991-1992 OFFICERS

GINGER HOWARD..... 772-2196 (H)

*President*

SHIRLEY LANG..... 474-5873 (H)

*Vice President - Programs*

DEBBIE BERGERON..... 367-7534 (H)

*Vice President - Trip*

ED CAIN..... 781-2246 (H)

*Vice President - Membership*

BEVERLY MERRITT..... 721-7814 (H)

*Vice President - Publications*

DONNA REPKA..... 980-4403 (H)

*Secretary*

LOU SCHULTZ..... 780-1564 (H)

*Treasurer*

### DIRECTORS OF TRIPS

SHARON INMAN ANITA YEOMANS

445-3702 (H) 796-8739 (H)

### TEXAS SKI COUNCIL

CRAIG LIEBERGOT

*Council Representative*

RAY NAUDAIN

*Council Representative-Alternate*

### BOARD OF DIRECTORS

1991-1992 SCSC Executive Committee

RAY NAUDAIN, *Chairman*

JERRY MONTGOMERY KIM PAGE

PAM HOLDER KATHY MORGAN

BILL KIRK CRAIG THARPE

PEGGY DONLEY MIKE ROONEY

JERI HARTMAN

### SITZMARKE STAFF

*Publisher* SPACE CITY SKI CLUB

*Editor* BEVERLY MERRITT

*Contributors* GINGER HOWARD

DEBBIE BERGERON

JERRY MONTGOMERY

BEVERLY MERRITT

J. R. HALL

BYRON MAKARWICH

*Cover* BEVERLY MERRITT

# SITZMARKE

The Sitzmarke is published monthly by the

SPACE CITY SKI CLUB

Volume 24, No. 3

July, 1991

# HEAD OF THE LIFTLINE

by Ginger Howard

## VOLUNTEERS WE NEED YOU!

Is there some activity that you really enjoy? It can be from vigorous outdoor sports to cultural activities to meeting at a restaurant for dinner. Chances are that whatever it might be, within this club, there will be a group of people who would enjoy doing the same thing. SCSC is a diverse group of people with varied talents, interests and occupations (*all with a common interest in skiing, of course, but it's summer*). Within our membership, there are so many opportunities to meet others who share like interests.

What we need are volunteers to coordinate activities. We have the procedures within our club to manage activities ranging from out of town overnight trips to the simplest meetings in the park. And remember that many of us are parents, and our club policies allow the planning of activities which are family oriented, and can include children. Some activities require budgets which must be approved by the Executive Committee. But don't be put off by the budgeting process; it's really not that hard, and there are plenty of seasoned veterans around to help. What we don't have is the ability to be completely spontaneous. Since the *Sitzmarke* is our main vehicle for distributing information during the summer, advance planning is a priority so that we can meet deadlines and get details to you.

So, think of something you like to do. You can bet someone else would like to do it too. Shirley Lang, our VP Programs (*Note: Shirley's numbers 474-5873 (H), 486-1712 (O)*) will be anxiously awaiting your call. Go on, do it; it's not hard, and you may be surprised at where it might lead you.

Continuing on the subject of volunteers; the annual Volunteer Party was held June 2 at Roberta and Ron Rambin's beautiful home. Suzanne Baker did a great job of coordinating the plans with music by a DJ and catering by Ninfa's. Thanks to all of you who helped, and especially to Roberta and Ron for their hospitality.

This month, we'll have Happy Hour at Cuellar's on July 18, and we'll be C&W dancing at Eddie's Ballroom in Manvel on July 20. So when you call Shirley to volunteer to run an activity, RSVP for Eddie's at the same time. Stay cool!



**IF THE REST OF YOUR SITZMARKE  
IS MISSING...  
YOU FORGOT TO RENEW  
YOUR MEMBERSHIP!!!!**

\*\*\*\*\*

**NO GENERAL MEETING  
JULY \* AUGUST**



# COMING EVENTS

JULY

NO GENERAL MEETING

\*\*\*



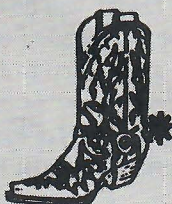
TRIP BUDGET  
MEETING  
JULY 10-11

\*\*\*



HAPPY HOUR  
CUELLEURS  
JULY 18

\*\*\*



EDDIE'S BALLROOM  
JULY 20

\*\*\*

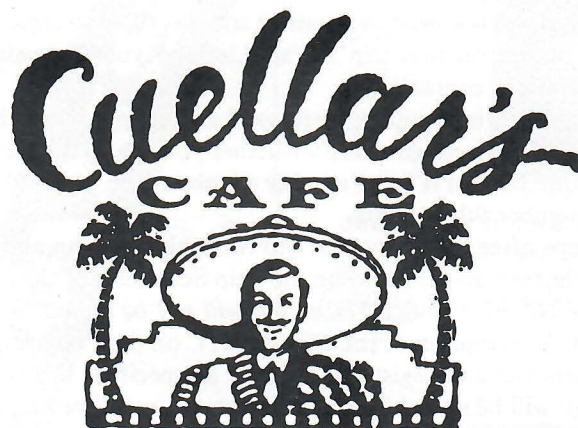
## What's Inside ??

HEAD OF THE LIFTLINE .....	Page 2
FROM THE SKI DESK .....	Page 4
1991 - 92 TRIP SCHEDULE .....	Page 5
KNOW YOUR BYLAWS .....	Page 7
THE VOLUNTEER PARTY .....	Page 8
THE REDFISH REEF SAIL .....	Page 10
HISTORY OF SKI LIFTS .....	Page 12

## HAPPY HOUR

JULY 18, 1991

5:00 - 8:00 P.M.



2101 W. LOOP SOUTH \* HOUSTON, TEXAS

CALL 688-SCSC FOR UP-TO-DATE CLUB NEWS



# FROM THE SKI DESK

by Debbie Bergeron

## BACK BY POPULAR DEMAND -- SKI TRIP SIGN-UP BY MAIL

Beginning on August 20th, you will once again have the opportunity to mail in your registration for ski trips for our exciting 1991-92 season! Last year was our first year to try this, and 1991-92 sign-up will be similar with a few modifications to help the process run more efficiently, as approved by the Executive Committee. Your TCs and ATCs are diligently working away on their trip budgets, and prices will appear in the August *Sitzmarke*. To help familiarize you with sign-up by mail, details follow and will be repeated in the August *Sitzmarke*. Be sure to read the entire list, including the disclaimers at the end!



1. You must have renewed your SCSC membership for 1991-92. Renewal will be verified with the VP of Membership before registration will be accepted. (*Only Exception: Minors signing up with their parent(s) on the Family Optional Trip.*)

2. Deposits are \$100.00 per person per trip. Checks will be deposited on or after August 27, 1991. Make checks payable to "SCSC" or "Space City Ski Club." Write the trip name at the bottom lefthand corner of each check, such as "Winter Park II Deposit." **SEPARATE CHECKS MUST BE WRITTEN FOR EACH TRIP AND MAILED IN SEPARATE ENVELOPES** (see #3 and #4 below).

3. Envelopes must be postmarked **no earlier than August 20** and **no later than August 27, 1991**. Any envelopes postmarked otherwise will be held until the September 9th Monthly Meeting and added to the trip participant list at the end of that meeting.

4. Each envelope must contain registration for only one trip, but may be for two people for that trip. Registration requires a completed Trip Sign-Up form and one deposit check per trip, filled out as stated in #2 above. Address each envelope as follows:

(SPECIFY TRIP NAME),

c/o Debbie Bergeron

15 Edgewood Forest Ct., Woodlands, TX 77381

5. You and your spouse (*or significant other*) are permitted to send in one combined check for \$200.00 for that specific trip. If registering for the Family Optional Trip, your deposit check will be the total of \$100.00 per each family member signing up for that trip.

6. If signing up for one of the three Texas Ski Week trips to Winter Park or Heavenly Valley, you must specifically list on the envelope and registration form which trip (*i.e., address envelope to "Heavenly Valley II, c/o Debbie Bergeron"*). If not specified, your envelope will be held until the September 9th Monthly Meeting.

7. Waitlists will not be started until a trip has filled to capacity. If your registration did not make the primary Participant List, you will be put on that trip's Wait List and your deposit check held by the Trip Coordinator until a spot becomes available and you are contacted.

8. No confirmations will be given until after September 9th, so it is highly recommended that you stop by the trip table at the September 9th Meeting to verify whether you are on the participant list or a wait list, and to pick up brochures and information from your TC and ATC. You may telephone the trip leader after September 10th for verification if you were not able to attend the September 9th meeting.

9. Sign-ups after the September 9th Monthly Meeting and all final payments should be given to the TC of the specific trip. Call their home number listed on the Trip Schedule for their mailing address, if needed. (*Note: Any registrations received by the TC or ATC prior to September 9th will not be added to the trip until the conclusion of the September 9th Meeting.*)

10. With the exception of the TC and ATC on their own trip, all members (*yes, even the VP of Trips*), will be required to mail in their deposits and registration forms as specified in #4 above. Personal delivery will not be accepted. Registrations received by mail will be sorted by trip name on the envelope and date stamped in the order received, and added to Participant Lists in that order, then to Wait Lists once a trip has filled to capacity.

11. If you cancel off a trip, the club's normal cancellation policies apply (*see Sections 5.0 through 5.5 under "Trip Penalties" of the SCSC Standing Rules*). Calculation of any refunds will be based on the date you were added to a Participant List and your check deposited.

12. Disclaimers:

- (a) Any single check which includes deposits for more than one trip will be returned to the sender.
- (b) Any registrations received that do not follow the instructions shown above may be returned to sender or held until conclusion of the September 9th meeting.
- (c) SCSC cannot be held responsible for any problems with mail service, including delayed delivery or lost mail.
- (d) Trip prices will appear in the Trip Schedule in the August *Sitzmarke*. Any information shown on the Trip Schedule may be subject to change.



# 1991-1992 TRIP SCHEDULE

DATES	RESORT AREA	NO. PART.	SKI DAYS	FINAL PMT.	TRIP COORDINATOR	ASSISTANT TRIP COORDINATOR
Nov. 26-Dec. 1	BRECKENRIDGE-Thanksgiving (TSC Fall Roundup)	40	4	9/26/91	<i>Terry McGuinness</i> 789-9497	<i>Joann Lane</i> 266-2621
Dec. 26-Dec. 31	KEYSTONE (Family Optional)	40	4	10/26/91	<i>Diana Mills</i> 463-6622	<i>Sue Shirley</i> 957-4664
Jan. 7-Jan. 12	TELLURIDE	40	4	11/7/91	<i>Margie Reeves</i> 960-8125	<i>Craig Sears</i> 980-4136
Jan. 12-Jan. 19	WINTER PARK I (Texas Ski Week Traditional)	40	6	11/12/91	<i>Marti Toomer</i> 859-5787	<i>Richard Hall</i> 931-4814
Jan. 12-Jan. 19	WINTER PARK II (Texas Ski Week Traditional)	40	6	11/12/91	<i>Sue Salvage</i> 690-5551	<i>Nancy Sarff</i> 461-9665
Jan. 14-Jan. 19	WINTER PARK III (Texas Ski Week Traditional)	40	4	11/14/91	<i>Charles Goodrich</i> 688-6556	<i>"Pete" Thorpe</i> 448-9767
Jan. 18-Jan. 25	ASPEN (Winterskol)	40	6	11/18/91	<i>Dick Bryant</i> 937-7533	<i>Linda Derenbecker</i> 772-6714
Jan. 26-Feb. 1	PARK CITY	40	5	11/26/91	<i>Glenn Bishop</i> 855-1615	<i>Angie Westergren</i> 847-1070
Feb. 2-Feb. 8	WHISTLER — BLACKCOMB	60	5	12/2/91	<i>Tom Hogle</i> 621-5348	<i>Linda Day</i> 664-1908
Feb. 4-Feb. 9	CRESTED BUTTE (TSC Winter Shootout)	40	4	12/4/91	<i>Dana Wardell</i> 497-8552	<i>Alek Tempski</i> 664-7223
Feb. 8-Feb. 15	VAIL	40	6	12/8/91	<i>Steve Holt</i> 956-2701	<i>Cindy Overton</i> 879-1347
Feb. 25-Feb. 29	TAOS	40	4	12/25/92	<i>Jerry Pyle</i> 726-1066	<i>Glenda Margraves</i> 977-5943
Mar. 8-Mar. 15	HEAVENLY VALLEY I (TSC Final Showdown)	42	6	1/8/92	<i>Chris James</i> 580-3698	<i>Rita Trelewicz</i> 350-5958
Mar. 8-Mar. 15	HEAVENLY VALLEY II (TSC Final Showdown)	42	6	1/8/92	<i>Cissy Dutcher</i> 467-6645	<i>Nolan Badeaux</i> 835-0862
Mar. 10-Mar. 15	HEAVENLY VALLEY III (TSC Final Showdown)	42	4	1/10/92	<i>A. G. Davis</i> 433-0541	<i>Susan Anslinger</i> 688-3933
Mar. 31-Apr. 5	STEAMBOAT	40	4	1/31/92	<i>Sandy Hoffman</i> 391-3224	<i>Barbara Huey</i> 871-8798

(All information on this sheet is subject to change. Prices not yet finalized; will be published in August Sitzmarke.)

**DEBBIE BERGERON**  
Vice President of Trips

**SHARON INMAN**  
Director of Trips

**ANITA YEOMANS**  
Director of Trips



## TRIP SIGN-UP #1

(Reminder: Each envelope must contain registration for only one trip, along with \$100 deposit per person. If signing up for Winter Park or Heavenly Valley, you must specify which -- I, II, or III.)

TRIP NAME: \_\_\_\_\_

### PARTICIPANT #1

### PARTICIPANT #2

Name \_\_\_\_\_

\_\_\_\_\_

Address \_\_\_\_\_

\_\_\_\_\_

\_\_\_\_\_ Zip \_\_\_\_\_

\_\_\_\_\_ Zip \_\_\_\_\_

Phone (H) \_\_\_\_\_ (W) \_\_\_\_\_

Phone (H) \_\_\_\_\_ (W) \_\_\_\_\_

Clip and Mail To: **{SPECIFIC TRIP NAME}**  
c/o Debbie Bergeron  
15 Edgewood Forest Ct.  
Woodlands, TX 77381

----- {cut on the dotted line} -----

*Signing up for another trip? Then clip and mail the following form in a separate envelope with a separate check from Trip #1 above ... (Run copies if registering for more than two trips.)*

## TRIP SIGN-UP #2

(Reminder: Each envelope must contain registration for only one trip, along with \$100 deposit per person. If signing up for Winter Park or Heavenly Valley, you must specify which -- I, II, or III.)

TRIP NAME: \_\_\_\_\_

### PARTICIPANT #1

### PARTICIPANT #2

Name \_\_\_\_\_

\_\_\_\_\_

Address \_\_\_\_\_

\_\_\_\_\_

\_\_\_\_\_ Zip \_\_\_\_\_

\_\_\_\_\_ Zip \_\_\_\_\_

Phone (H) \_\_\_\_\_ (W) \_\_\_\_\_

Phone (H) \_\_\_\_\_ (W) \_\_\_\_\_

Clip and Mail To: **{SPECIFIC TRIP NAME}**  
c/o Debbie Bergeron  
15 Edgewood Forest Ct.  
Woodlands, TX 77381



# KNOW YOUR BYLAWS AND STANDING RULES

Our organization is governed by its bylaws and standing rules. In order to better understand the policies by which we operate, this column will, from time to time, highlight certain bylaws and standing rules which affect the members most often. Bylaws define the primary characteristics of the organization, prescribe how the society functions and includes all rules that the society considers so important that they cannot be changed without previous notice to the members and the vote of a specified large majority. Standing rules are rules which are related to the details of the administration of our organization.

## SITUATION

*Si Lancelot cancelled from TSC Triathlon when he found out he had an opportunity to go diving in Belize. The cost of the activity was \$84, and he received a refund of \$74 at the May meeting. Later that evening he reported to the treasurer that while rushing to change clothes during the Follies, he had lost his refund check.*

## Review of Standing Rule 6.0 ACTIVITY PENALTIES/CHARGES

### 6.3 CANCELLATION FEES

- A. Activities priced at \$10 or less -no refund
- B. Activities priced at more than \$10
  - 1. Refund shall be price less \$10
  - 2. To receive refund, activity coordinator must receive written notification prior to final payment date or seven days before said activity, whichever is earlier.

The cost of the activity was appropriately refunded as stated in the Standing Rules. However, when a member loses a refund check, the Club's policy is to not assume stop payment charges on the check. Our checks are valid for 60 days. After that time period, if the check had not cleared the bank, another refund check would be issued. (*Luckily, for Si, someone found his check in the dressing room.*)

Reviewing the rules by which SCSC operates will help to create better understanding of those policies which affect the membership. Next month: *Trip Penalties.*



## Houston's First Snow Ski Shops Since 1955

**PARKAS** - Various Insulators, Shells, Anoraks

**PANTS** - Stretch, Insulated Pants, Wind Pants, Bibs

**SUITS** - One Piece Insulated and Shells

**SWEATERS** - Wool, Silk, Cotton

**AFTER SKI BOOTS** - Budget Prices

**TURTLENECKS** - Cotton, Thermax

**UNDERWEAR** - Thermax, Silk, Poly

**GOGGLES & GLASSES**

**GLOVES & MITTENS**

**SOCKS & LINERS**

**LUGGAGE**

**GAITERS & OTHER ACCESSORIES**

**All in Stock for Men, Women & Children**

## J. RICH SPORTS Ltd.

No. 1  
2369 Rice Boulevard  
Houston, Texas  
(Rice University Village)  
529-8767

No. 2  
8562 Katy Freeway at Bingle  
West Memorial Office Park  
Houston, Texas  
465-3909

### CLOTHES RENTAL AT KATY STORE ONLY

\*\*\*\*\*

Bib — \$15 per trip  
Parka — \$15 per trip

☆☆☆☆☆☆☆☆☆☆☆☆☆☆☆☆☆☆  
**Check Out Our Red Hot Prices**  
☆☆☆☆☆☆☆☆☆☆☆☆☆☆☆☆☆☆

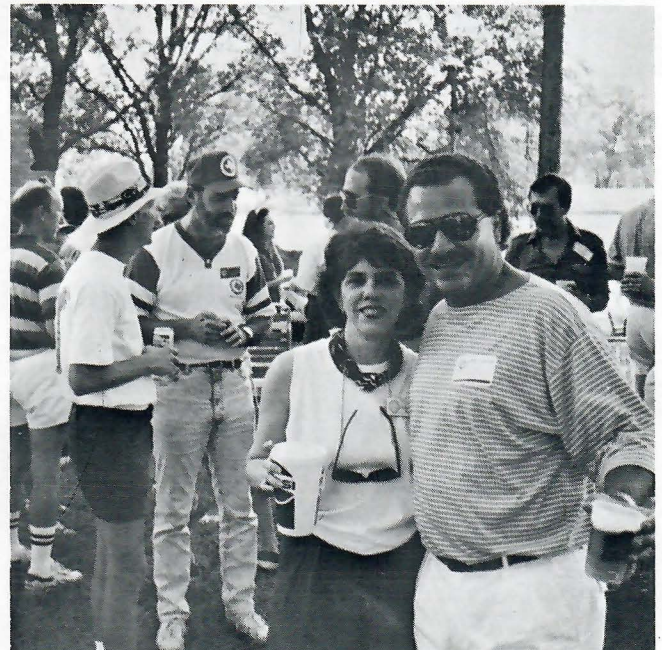


# THE VOLUNTEER PARTY

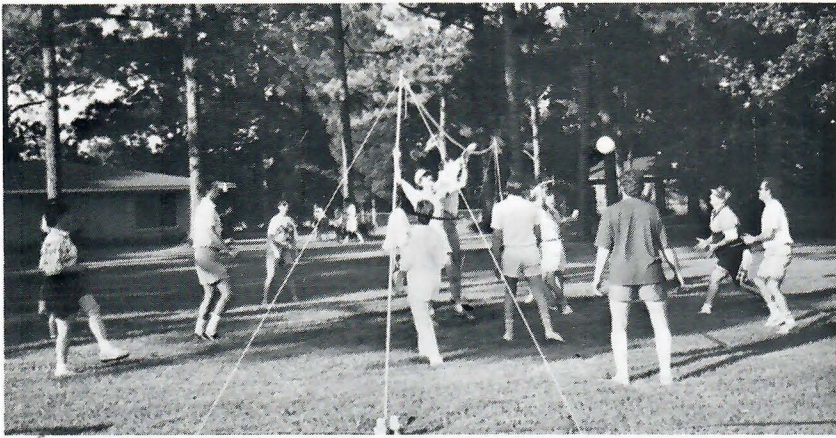


*by Peggy Donley*

135 SCSCers had a great time munching on fajitas by Ninfa's and playing volley ball or just sitting around listening to the terrific music at the **ANNUAL VOLUNTEER PARTY** for the 1990-91 SCSC year. The following people continued the spirit of volunteering by assisting the day of the party: **Jerry Montgomery, Peggy Donley, Shirley Lang, Dana Wardell, Beverly Merritt, Marci Nickerson, Mickey Carmicaehl, and Lee Jones.** **George Sanford**, a guest (and hopefully soon to be new member), also helped out activity coordinator **Suzanne Baker.** Further, we need to extend a very special thanks to **Ron and Roberta Rambin** for once more opening up their home for this annual event. Volunteerism is what makes our club successful and so as the 1991-92 year begins remember you too can be invited to this fun event by **VOLUNTEERING!!!** Thanks again to **Suzanne, Ron and Roberta** for making the volunteer party a great time for all.







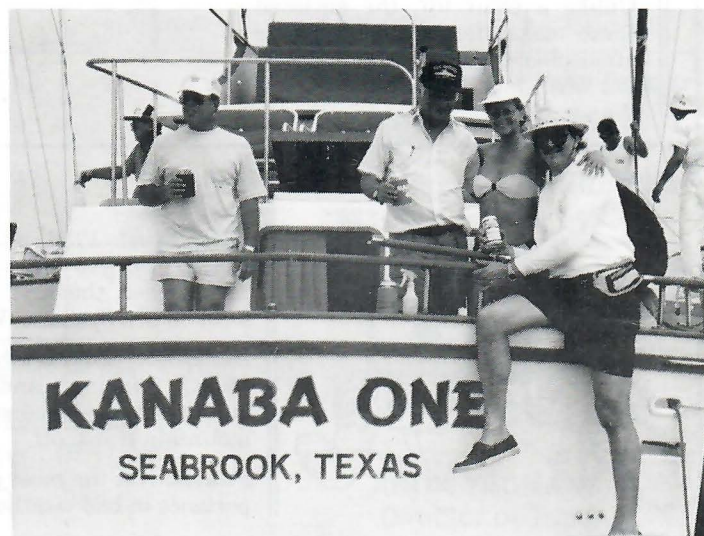


# THE REDFISH REEF SAIL





# "YOU SHOULD HAVE BEEN THERE"



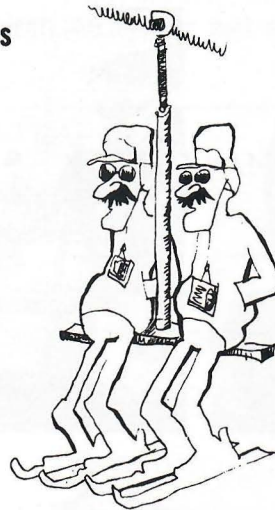


# A BRIEF HISTORY OF SKI LIFTS

In the early-P.C. (Pre-Chair Lift) era, skiers would do anything to get up the mountain. Some tried modified Model Ts, some even hiked, but our favorites were the complicated contraptions that, like the early flying machines, never quite made it. There was the ski barge, a streetcar on a rope that seemed to be designed more for thrills than transport. Even better was the snow scooter, ski country's answer to the Everglades fan boat, that they say moved skiers at speeds up to 70 m.p.h. (They don't say, though, how many survived to ski down.)

All this madness first began in California (doesn't it all?) when, in 1913, a 500-foot steam-engined toboggan lift was built. Located in Truckee,

## T-Bars



**First Built:** 1940, at Pico Peak, Vermont.

**Benefits:** Warmer than a chair lift on cold days; lifelines are always smaller.

**Faults:** A bitch to stay on when single or when riding with a beginner or a small child (it hits your knees).

The line feed from the cable gives the T-bar virtually no stability should you lose your balance.

The T-tracks can get very rutted out.

The T-bar cord can snap, and ouch—whiplash!

## Gondolas



**First Built:** 1953, at Sugar Bowl, California.

**Benefits:** Fun for large groups, keeping warm on a cold day, quickies.

**Faults:** You must take off your skis and carry them.

The windows fog up. The car can be like a sauna on a warm, sunny day.

Unlike a chair lift, the enclosed space makes for a more intimate atmosphere. This can be unpleasant when fate deals you some less than perfect company.

## Poma Lifts



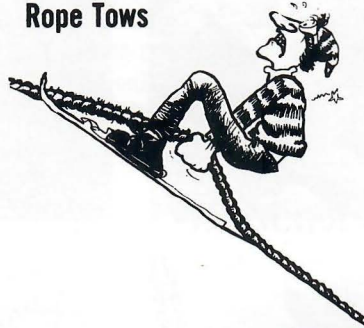
**First Built:** 1946, by a man named Pomagalski, in Europe.

**Benefits:** The Pomas detach from the cable at the base, which makes loading easier.

**Faults:** For men, there's the potential to become a permanent soprano.

While loading is easy, taking off can send you flying on your face from the force of the engaging jerk of the cable.

## Rope Tows

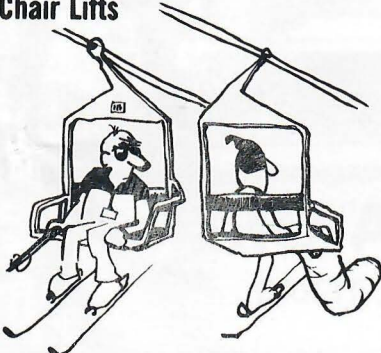


**First Built:** 1933, by Alec Foster, in Shawbridge, Quebec. Powered by the rear wheel of an old beat-up Dodge.

**Benefits:** It's cheap to build and operate.

**Faults:** Chafed hands, worn-out mittens and gloves, aching backs, rope burns, sudden baldness (from when long hair gets intertwined with the rope).

## Chair Lifts



**First Built:** 1936, at Sun Valley, Idaho. You had to go single until 1946, when the first double was built on Mt. Spokane, Washington.

**Benefits:** Comfortable, convenient, relaxing, and great on sunny days. The standard in mountain transport.

**Faults:** Not the most pleasant experience in bad weather.

(continued)

near present-day Squaw, this lift consisted of two oversized toboggans that were somewhat balanced, since one went up while the other came down. At this point, skiers were still a small, hardy group. (There was too much hiking for most folks.) Skiing didn't explode until twenty years later when the rope tow was invented, giving would-be skiers a relatively easy way up the side of mountains. It was all uphill for the sport from there.

Reprinted from  
**SKI PARTY! THE SKIER'S GUIDE TO THE GOOD LIFE.**  
Jonathan Runge and Stephen Deschenes  
Design by Larry Kazal, New York



# MILLER THEATER AT HERMAN PARK



THE  
MERRY WIVES  
OF WINDSOR

AUGUST 10, 1991

NO ADMISSION CHARGE

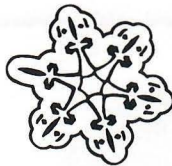
Bring Your Own Refreshments,  
Lawn Chairs, and Blankets



SHIRLEY LANG - 474-5873

## CLASSIFIED

**CONDO - LAKE CONROE**  
FOR RENT: Luxury waterfront  
condo at Walden on Lake Conroe.  
Fully Furnished. Sleeps 5.  
\$55/night, \$300/ week. Call:  
**Bob Nielsen**  
(409) 582-4193



**IRS  
or  
IRA?**



James V. Felker, J.D.

**Jim Felker Insurance Agency**



1437 Esperson Building  
815 Walker at Travis  
Houston, Texas 77002  
224-1759

## THE PRIVATE DIET

DIET CONSULTANT / IMAGE MAKER

ENJOY YOUR LIFE - TAKE CONTROL

GENE RYAN F. MICHAELS

P.O. BOX 631474

HOUSTON, TEXAS 77063

953-9149



creative portraiture...

...with a woman's touch

**Maureen Webb Photography**

glamour • portfolios • executive

by appointment

**(713) 668-9028**

6706 Ferris

Bellaire, TX 77401



# DIVE ROATAN

**DIVE ROATAN AT THE COCO VIEW RESORT  
SEPTEMBER 28 - OCTOBER 3, 1991  
6 DAYS / 5 NIGHTS / 4 DAYS DIVING  
3 BOAT DIVES PER DAY  
UNLIMITED BEACH DIVING**

**\$788.00**

**DEPOSIT \$200.00  
FINAL PAYMENT DUE  
AUGUST 9, 1991**

**FOR ADDITIONAL INFORMATION  
STEVEN HOLT  
(W) 869-343 (H) 956-2701**

Free Service

**TEXAS Apartment Locators**

**CRAIG THARPE**

6455 Richmond (at Hillcroft)  
Houston, Texas 77057

789-7950



River Oaks Bank Building #812  
2001 Kirby at San Felipe  
Houston, TX 77019  
Bus.: (713) 521-0400

**BRANT B. WILLIAMS**  
Agent

STATE FARM INSURANCE

STATE FARM INSURANCE COMPANIES  
HOME OFFICES: BLOOMINGTON, ILLINOIS

"Like a Good Neighbor, State Farm is There"

10621 HARWIN SUITE 318  
HOUSTON, TEXAS 77036

ADVERTISING SPECIALTIES

**C&L Specialties Co.**

Be Wise Advertise

- T-Shirts • Jackets • Sweat Shirts
- Caps • Sport Shirts • Signs • Decals
- Aprons • Embroidery • Screen Printing
- Banners • Bumper Stickers • Pens
- Pencils • Posters

(713) 541-3130

LEONA SCHROEDER, R.P.T.  
President

JAY ARMSTRONG  
(713) 981-3064

**ARMSTRONG WALLPAPERS**

Residential and Commercial Installations

2515 HOPKINS HOUSTON, TEXAS 77006

DOES YOUR **SMILE**

LOOK LIKE THIS?  
WOULD YOU LIKE  
A PURRR-FECT **SMILE**

CONTACT THE FRIENDLY STAFF  
OF DALE ALLBRITTON  
GENERAL DENTISTRY

15% SKI CLUB DISCOUNT  
INSURANCE ACCEPTED  
VISA / MASTER CARD  
713 / 776-9080



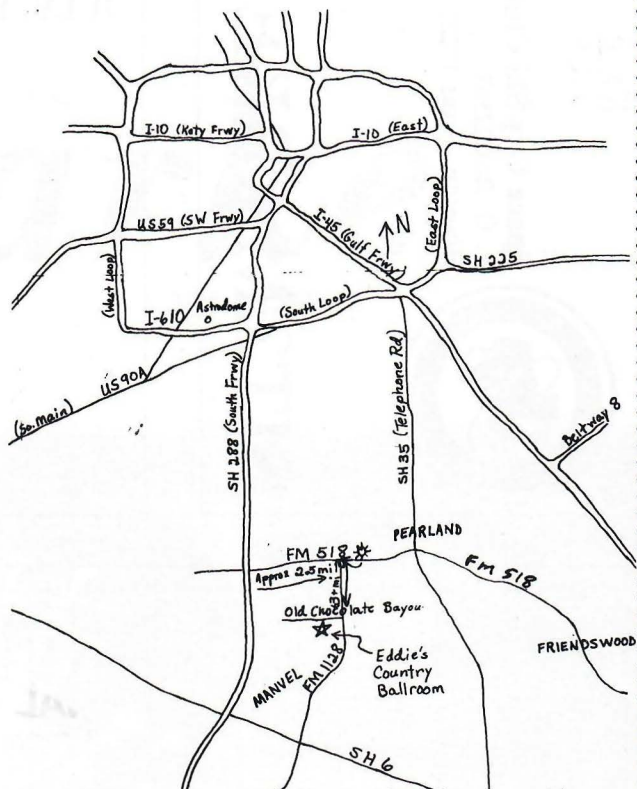


# EDDIE'S BALLROOM COUNTRY WESTERN DANCING HUGE DANCE FLOOR

**LIVE  
WESTWOOD BAND**

**SATURDAY - JULY 20, 1991**  
6835 Chocolate-Mustang Bayou Rd.  
MANVEL, TEXAS

**\$5.00 Cover Charge**  
**Beer and Setups Available**  
**Shirley Lang — 474-5873**



## CHANGE OF ADDRESS

The Sitzmarke is mailed at bulk rate, therefore the Post Office will not forward The Sitzmarke if you move. When your address changes, you should advise the Vice President of Membership, Ed Cain at 781-2246. The Address change is needed by the 15th of the month to be sure that you will receive the next issue.

If you are a member and have not received your Sitzmarke, please notify Ed Cain at 781-2246 as soon as possible.



## AUGUST SITZMARKE

Send August Sitzmarke articles  
to

Beverly Merritt  
5219 Arboles Drive  
Houston, Texas  
77035

\*

**DEADLINE**  
**JULY 10, 1991**



(713) 495-2113

Member  
American Association of  
Orthodontists



**Louis D. Schultz, D.D.S., M.S.**

*Diplomate, American Board of Orthodontics*

Office Hours  
By Appointment

11540 Harwin Drive  
Houston, TX 77072

**Donna Kidwell, CRB**  
Multi-Million Producer



REALTY EXECUTIVES  
P.O. Box 570204  
Houston, Texas 77257-0204

(713) 265-6500  
(713) 499-7011

**Allstate®**



**LOREN GULLEDGE**

Account Agent  
7001 Highway 6 South at Bellaire  
Suite 236 (Target Center)  
Houston, TX 77083  
Bus. 879-4885 • Res. 556-1370

**CALL 688 - SCSC**  
**FOR UP-TO-DATE CLUB NEWS**





Space City Ski Club  
P. O. Box 22567  
Houston, Texas 77227

**SITZMARKE**

**JULY, 1991**

**BULK RATE  
U.S. POSTAGE  
PAID  
PERMIT NO. 9036  
HOUSTON, TEXAS**

**JULY 8, 1991**

**DATED MATERIAL — DO NOT DELAY**

SUNDAY	MONDAY	TUESDAY	WEDNESDAY	THURSDAY	FRIDAY	SATURDAY
	1  EXECUTIVE COMMITTEE MEETING	2	3	4	5	6
7	8	9	10  TRIP BUDGET MEETING	11  TRIP BUDGET MEETING	12	13
14	15	16	17	18  HAPPY HOUR CRUELLERS 5:00 - 8:00 P.M.	19	20  EDDIE'S BALLROOM
21	22	23	24	25	26	27
28	29	30	31	<b>AUGUST</b>		

☆ **REMEMBER** ☆  
NO General Meeting in June, July or August

				1	2	3
4	5	6	7	8	8	10
11	12	13	14	15	16	17
18	19	20	21	22	23	24
25	26	27	28	29	30	31