

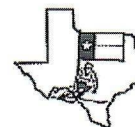


The Sitzmarke

SPACE CITY SKI CLUB

www.spacecityskiclub.org

September 2005



Member
Texas Ski
Council

Vol. 39 No. 5

FAQS FOR SCSC RACERS - PART I

Robert Wray, Race Director

I'm a first time racer. What will the course look like? Club races are usually held on a short GS-style (Giant Slalom) course on a green or easy blue slope. Two identical courses will actually be set up in dual (side by side) format, and each course will consist of about 12 - 16 gates (poles with colored banners). You must turn around each of the gates as you ski back and forth, across and down the slope. One course will have red or yellow gates and the other will have blue or green, but you'll only ski one or the other depending on whether your race number is odd or even.

I'm afraid that I'll go too fast, lose control and crash! Don't worry - these courses are set up so that it's actually hard to go fast. If you can get down a slope where there are people standing around, and you can avoid crashing into any of them, then you're ready to race. You can snowplow or sideslip the whole way if you want to. If you're still concerned, go with a friend and take a practice run or two if there is a race course open to the public. If you want more practice time, along with expert advice, you can take a race clinic that might be given prior to the club races.

What if the person on the other course is a lot faster than I am? That's not fair! You'll only be racing against the clock - not the other person. In fact, don't pay any attention to the other person. If they lose control and interfere with you in any way, you'll get to race again.

How will I know when it's my turn to go? Your club will race as a group and will be assigned a time slot or race "window". Your race director will let you know in advance of your start time. Ski down to the start house at the top of the course prior to the assigned time, and look for other members of your club. You'll be given a sticker with your race number on it called a "bib". Wrap the sticker around one of your poles, below the grip (look at what everyone else is doing). Don't trade bibs with anyone else, even if they have your favorite number.

(Your entire club will be disqualified if anyone races with a number other than the one assigned to them.) The next step is to form up in two lines, in bib number order, with odd numbers in one line and even numbers in the other. Race officials and club representatives will be directing all of this, so it won't be as chaotic as it sounds - in fact, there will usually be plenty of fun and lively conversation going on all around and you'll really feel like part of a team.

What happens at the start? While you're waiting in line, watch the racers ahead of you and observe how they line up in the starting area. When it's your turn, line up behind the timing wand (it starts the timing clock for your course when you push it open), and point your skis in the general direction of the first gate. (You'll know which way to turn by watching the other racers.) Plant your poles a short distance downhill on the other side of the wand. Get comfortable and wait for the starter to say "Racers ready...Go", then just push off downhill with your poles whenever you're ready. Don't ski directly at the first gate, but aim for a point several ski lengths higher up the hill before you start your turn. Repeat for the rest of the gates and before you know it you'll be crossing the finish line.

What am I supposed to do when I get to the bottom? At most races, your time and handicap (score) will be announced over a loudspeaker shortly after you finish. Your time and handicap will also be posted on a board at the bottom of the course later on. Try to remember your handicap, but don't worry too much about your time. As soon as possible, move away from the finish area and wait with other club members for the rest of our racers to finish. This is also where a group photo might be taken, so stick around for a while if this is the case.

Next Month: How do I find out if I earned a medal? What is this handicap stuff all about?

General Meeting - September 12 at 6:30 p.m.

Chateau Crystale - 2517 S. Gessner (1/2 Block north of Westheimer)

Featuring 2005-06 Ski Trip Sign Up. Be sure not to miss it!

PRSR STD
U.S.
POSTAGE
PAID
Houston, TX
Permit #9036

SPACE CITY SKI CLUB
P.O. Box 22567
Houston, TX 77227



SPACE CITY SKI CLUB 2005-2006 EXECUTIVE COMMITTEE

PRESIDENT.....CINDY MOORE
president@spacecityskiclub.org..... (713) 984-1060
VP-PROGRAMSJOSE ARAUJO
vpprograms@spacecityskiclub.org..... (713) 541-6838
VP-TRIPS..... KAYLEEN KILL
Kayleen-kill@houston.rr.com (281) 293-9533
VP-MEMBERSHIP..... JEANNINE JIRAL
Jeannine@ev1.net..... (281) 723-6212
VP-PUBLICATIONS..... PAT PIECH
Ppiech48@houston.rr.com (281) 531-7650
SECRETARY BRENDA SOILEAU
Bgsoileau@aol.com (832) 654-0462
TREASURER GARY LADD
treasurer@spacecityskiclub.org (713) 320-5233

DIRECTOR(S) OF TRIPS

Hope Flynn Patty Finch

DIRECTOR OF COMMUNICATIONS

BRUCE LOWTHER
rblowt@hal-pc.org..... (713) 785-5196

Volunteer for this Appointed Position

AUDITOR

DIRECTOR OF PROGRAMS..... JESSICA HALTER
TSC REPRESENTATIVE LEYLA OZKARDESH
TSC ALTERNATE REPRESENTATIVE..... JOHN RICE
RACE DIRECTOR..... ROBERT WRAY

BOARD OF DIRECTORS

Christine March - *Chairman*

Ross Baker • Penny Chancey • Llona Doubet •
Ellen Eastham • Lori Gilliland • Sean O'Brien •
Leyla Ozkardesh • John Rice • Dawn Rodriguez

SITZMARKE STAFF

EDITOR Pat Piech
PHOTOGRAPHY Ron Hayes, Bruce Lowther

SITZMARKE Published monthly by **SPACE CITY SKI CLUB**

Arranged and Printed by VALLERO MARKETING & DESIGN
Tonja Sanchez (713) 298-5058 article4newsletter@yahoo.com

IN THIS ISSUE

FAQs for SCSC Racers - Part I.....	1
Head of the Lifeline.....	3
Programs and Activities.....	4
Calendar of Events.....	4
From the Ski Desk.....	5
2005-2006 Ski Trip Schedule.....	6
Volunteer Party Fun.....	7
Trip Registration Form.....	8

Dana Unlimited

*Jewelry Especially for You
Sterling Silver and Gem Stones
Available for home shows*

Houston, Texas
(281) 497-8552

Dana Wardell

TSC WINTER EXPEDITION

Finland/Sweden/Lapland
January 28-February 5, 2006

Lapland - The Land of a 1000 Tales
Make one your own!

TC: David Eickhoff, 832-593-7620 or eickhoff@hal-pc.org



RONALD N. HAYES AND ASSOCIATES, P.C. ATTORNEY AT LAW

P.O. Box 801525
HOUSTON, TEXAS 77280-1525
Office (713) 524-7670

(713) 478-4290 Cell (713) 939-0679 FAX
(713) 788-5300 Pager ronhayes@houston.rr.com

Join your SCSC friends in the BAD BLADES ROLLERBLADE GROUP

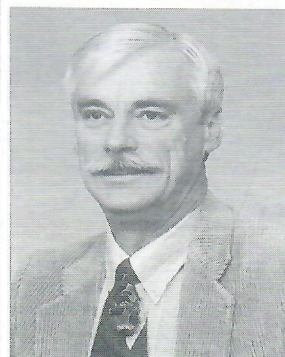
Every Sunday morning. For the weekly meeting place and time
see www.badblades.org, or contact Susan Austin,
swicker@houston.rr.com or Dale Albritton (713) 776-9080



Dale L. Albritton, DDS, FAGD

6910 Bellaire Blvd, Unit #4 ~ Houston, TX 77074
Tel: (713) 776-9080

**Offering Quality Comprehensive Dental Care for Adults &
Children** ~ Most Insurance Plans Accepted ~ Flexible Appointments ~
Payment Options Available ~ Emergencies Handled Immediately



COUNTRYWIDE PROPERTIES

Mike Dawson

Real Estate Broker/Civil Engineer

Phone: (281) 759-6666
Cell: (713) 301-9533
Fax: (281) 759-6668
E-mail: mike.dawson@att.net

11211 Richmond Avenue, B-111
Houston, TX 77082



HEAD OF THE LIFTLINE

Cindy Moore, President



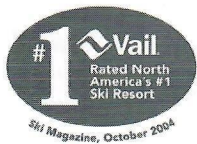
Trip sign up is now in full swing. I trust you have renewed your membership and have sent in your registration form or signed up online for the ski trip of your dreams! The hard part is deciding where to go with all of the top-notch destinations and fun activities to choose from this year! In only a few months, we will be swishing down the slopes and socializing with our SCSC ski club buddies! And don't forget the

ever-growing list of non-skiing activities and happy hours that Jose, Jessica and Deb have been busy organizing with their terrific crew of activity coordinators. We can always use more volunteers, so get with Jose or Jessica if you want to lead an activity or just help out.

Be sure not to miss our first SCSC meeting of the year, September 12th, at the fabulous new meeting venue Chateau Crystal at Westheimer and Gessner. It is classy and functional

and we will have food available as well as a cash bar. The meeting will feature our full line up of trips for the 2005-06 season. You will be able to get more information about the trips and activities planned. If you haven't decided where to ski this year, be sure to come, visit with the TC's and ATC's and sign up! Don't forget to bring your checkbook, because we can only take credit cards for ski trips online through PayPal, not at the meeting. Mark your calendars now for Friday, December 2, for a Holiday Gala to be remembered.

Sue Salvage is still looking for energetic SCSC members who would like to be ambassadors at our meetings and happy hours. Please contact her at 713-690-5551 or ssalvage@houson.rr.com to get involved with this important function. You will 'host' prospective club members, take them around to the trip and activity tables, explain the sign up process and introduce them to existing members. It's a great way to meet new people and volunteer for your club! I'll see you at the meeting on September 12th!

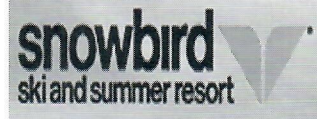


VAIL, COLORADO

December 3-10, 2005

Beautiful snow, long runs and not a grinch in sight! You can ski 3-1/2 days for \$623 or 6 days for \$771. Sign up early or you'll miss out...

TC: Dana Wardell, 713-522-2733 or dwardell@stalkerenergy.com



SNOWBIRD/ALTA

February 25-March 4, 2006

The reason Utah has the Greatest Snow on Earth! Ski-in/Ski-out from the fabulous Cliff Lodge Hotel.

TC: Bruce Baird, 281-436-4661, bruce2skis@aol.com



C&L Specialties & Screen Printing Co.

LEONA SCHROEDER
PRESIDENT

10621 HARWIN SUITE 318
HOUSTON, TEXAS 77036
713| 541-3130
713| 771-8742 FAX
Business: candispec@bigplanet.com

QUALITY SCREEN PRINTING
QUALITY EMBROIDERY
AWARDS, TROPHIES, PLAQUES
PROMOTIONAL PRODUCTS
Personal: leonassch@bigplanet.com

CANDLES GIFTS CRAFTS

Cindy's Etc.

& MORE

15302 Stuebner Airline Rd. Suite E
Houston, Texas 77069
(281) 866-0998



I ♥ Referrals!

P.O. Box 570204
Houston, TX 77257-0204
Office 281/242-6500
Fax 281/242-6515
Pager 713-908-9808
donnaakp7@aol.com



Donna Kidwell, CRS, CRB
Broker Associate



Debbie
DEBBIE ABADIE, CRS
BROKER/PARTNER
CERTIFIED RESIDENTIAL SPECIALIST

KELLER WILLIAMS
REALTY

713-664-6400

PROGRAMS AND ACTIVITIES

Jose Araujo, VP of Programs
Jessica Halter, Director of Programs



LET'S GET STARTED! Our first General meeting for the 2005-06 season is here and it's all about the trips, baby! The trip coordinators will be ready and armed with tons of information for you about each fun-filled trip. Trip sign up began August 13th and some trips may be full, but don't let that discourage you. Put your name on the wait lists! Every year dozens of people make it onto a full

trip from the waiting lists. For more details, read Kayleen's article in this edition of the Sitzmarke.

Remember, the new official SCSC meeting place is Chateau Crystale, located on the 2517 S. Gessner, just a half block north of Westheimer. You are going to be impressed with this place!

You don't want to miss this month's Happy Hour at the Six Degrees Lounge. We just hope the temperature will be more than 6 degrees below our regular summer heat...and soon!

Jessica has some more news to announce:

As mentioned in last month's article, we are planning to "give back" something each month to our community, both local and/or worldwide. Our September theme will be "Back to Skiing...Back to School!" benefiting First Book-Houston. While we are planning to get back to the slopes, most Houston area children will be hitting the books. The sad part is that some Houston children only have books at school. Reading is vital to the success of all students and our goal this month is to put NEW BOOKS into as many local underprivileged children's

hands as possible. Please bring a NEW CHILDREN'S BOOK to the meeting and/or make a cash donation to the charity so that books may be purchased. I know the hearts of many of you and know that you will be willing to join us in this opportunity to help children read! (You will get extra door prize tickets, too!) There will be a table set up at our meeting to tell more about the charity.

As always, we are looking for volunteers. I have a tour operator that wants to work with us on NON-skiing trips. Anyone want to take a fun group of SCSC people (and non-members too) to New Orleans? New York? On a dive adventure? Just let Jose or me know and we'll get to work on it with you! Local events too, need to be planned and led. Anyone interested in taking a group to the Renaissance Festival or a Hill Country River Rafting Adventure is still possible in September or October. Oh, and let's go to Wurstfest...a big bus...full ice chests...GREAT food and POLKA dancing until you explode! Come on, you party animals, give us a call!



For a listing of upcoming activities, refer to the Calendar of Events in this issue or go to our website at www.spacecityskiclub.org. Please check your e-mails for any short notice activities.

Remember to send me any SCSC past files, memorabilia, documents or items. My evening phone is 713-541 6838 and my e-mails are vpprograms@spacecityskiclub.org or joseangel888@hotmail.com and Jessica's e-mail is jessicahalter@yahoo.com.

CALENDAR OF EVENTS

Date	Event	Coordinator	Phone	E-mail/Address
SEPTEMBER				
9/8	Happy Hour—Six Degrees Lounge	Deb Cini	(832) 528-6125	911 Franklin
9/10-17	Maui, Hawaii	Sean O'Brien	(713) 787-9762	seanobrien1981@sbcglobal.net
9/12	General Meeting—Chateau Crystale	Jessica Halter	(713) 545-9020	2517 S. Gessner
OCTOBER				
10/13	Happy Hour—Red Lion Pub	Deb Cini	(832) 528-6125	2316 S. Shepherd
10/17	General Meeting—Chateau Crystale	Jessica Halter	(713) 545-9020	2517 S. Gessner
10/28	Games Night and Halloween party	TBD		
NOVEMBER				
11/05	Wine Tasting at Leslie Caldwell's home	Leslie Caldwell	(832) 251-1296	lescaldwell@sbcglobal.net
11/10	Happy Hour – TBD	Deb Cini	(832) 528-6125	dcini@victoria.com
11/14	General Meeting (Chateau Crystale)	Jessica Halter	(713) 545-9020	jessicahalter@yahoo.com
OTHER ACTIVITIES				
12/2	Holiday Gala	TBD		

For the latest updates on events, check out www.spacecityskiclub.org

If you have an idea for an activity or would like to volunteer to be on AC or AAC, contact VP of Programs, Jose Araujo (713) 541-6838 joseangel888@hotmail.com or vpprograms@spacecityskiclub.org, or Director of Programs, Jessica Halter (713) 545-9020 jessicahalter@yahoo.com. For more information or to pass on ideas about Happy Hours, contact Deb Cini (832) 528-6125 dcini@victoria.com.

SCSC sends sincere condolences to the Friends and Family of Shirley Greenberg who passed away on May 3rd after a 2-year struggle against lung cancer. She will be missed by all who knew her.



Hopefully you have already signed up for one or more of the ski trips. If not, you still have several options. Online registration is available for members who have paid their dues:

- Go to www.spacecityskiclub.org
- Click on My SCSC
- If you have not already established an account, you will need your membership number (on the label of the Sitzmarke) and SCSC must have

your correct email

- Click on SCSC members may request an account here
- Complete the information
- Your password will be sent to the email on record
- If you have an account, login
- Click on Ski Trips
- Click on View for the trip you wish to signup for
- Click on Signup for this trip
- The next few screens should be self explanatory
- You have the option to pay just the deposit or the full

payment using PayPal

A second option is to use the registration form in this issue and mail or give this along with your deposit to the appropriate TC.

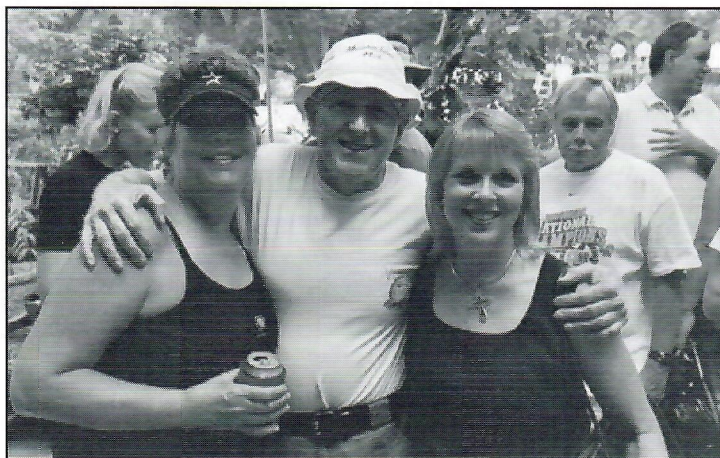
Third option is to contact the TC and have them give you a registration form or trip release form that you can mail or give them with the payment.

Last option is to come to the September 12 General Meeting and sign up in person. NOTE we will be meeting at a new location - Chateau Crystale at 2517 S. Gessner.

Whether you have already signed up for a trip(s) or looking to sign up on one or more, you want to come to the meeting and get up-close and personal with all the Trip Coordinators (TCs) and Assistant Trip Coordinators (ATCs). Get all the scoop on the trip and meet fellow trip participants. Maybe even scout out a roommate if you don't already have one.

REMEMBER, you must be a member to sign up for a trip. Memberships are approved at the Executive Committee meeting each month, so send in your membership early to make sure you can sign up for a trip.

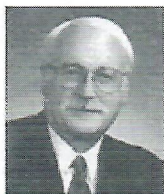
I want to say "See you at Chateau Crystale," but I will be on the club trip to Hawaii. So I will just say ALOHA for now and HOPE EVERYONE GETS ON THE TRIP(S) THEY WANT.



Volunteer Party - Good Friends, Good Fun



Volunteer Party - Water Sports



BRANT B. WILLIAMS
Agent

River Oaks Bank Building
2001 Kirby Drive, Suite 812
Houston, TX 77019-6033
Bus.: (713) 521-0400
(800) 637-6803
Fax: (713) 521-0430



STATE FARM INSURANCE COMPANIES
HOME OFFICES: BLOOMINGTON, ILLINOIS

"Like a good neighbor, State Farm is there" ®

MAMMOTH

MAMMOTH MOUNTAIN

January 21-28, 2006

Don't wait another 10 years to get to Mammoth. Join us for a week of outstanding skiing in an area that averages 400 inches of snow per year.

TC: Bill Bomberger, 281-495-8668 or wbomberger@houston.rr.com



Space City Ski Club

2005-2006 Ski Trip Schedule

Dates	Nights/ Ski Days (DOT)	Trip Destination	Final Payment	Trip Price	TC ATC	Home Phone	E-mail Address
Nov 22-27, 2005 (Tues—Sun)	5/4 (PF)	KEYSTONE (TSC Fall Roundup) Family Optional	9/12/05	\$664 LS458 CS344	Louella Steller Laurie Haischer	713-666-2347 281-920-9269	ljds@aol.com lhaischer@yahoo.com
Dec 3-10, 2005 (Sat—Sat)	7/6 (PF)	VAIL	9/20/05	\$771 LS550	Dana Wardell Judy Schiro	281-497-8552 713-939-8235	dwardell@stalkerenergy.com ronhayes@houston.rr.com
Dec 3-7, 2005 (Sat—Wed)	4/4 (PF)	VAIL – Short	9/20/05	\$623 LS396	Dana Wardell	281-497-8552	dwardell@stalkerenergy.com
Jan 7-14, 2006 (Sat—Sat)	7/6 (HF)	STEAMBOAT (TSC Traditional)	10/3/05	\$940 LS609	Thuy Tran Richard Rocque	281-376-0343 281-376-0343	ttran@kmg.com rroque@entouch.net
Jan 10-15, 2006 (Tues—Sun)	5/4 (HF)	STEAMBOAT – Short (TSC Traditional)	10/3/05	\$740 LS522	Thuy Tran	281-376-0343	ttran@kmg.com
Jan 21-28, 2006 (Sat—Sat)	7/6 (HF)	MAMMOTH	11/1/05	\$1166 LS763	Bill Bomberger Sharon Simandl	281-495-8668 713-862-4883	bbomberger@satake-usa.com ssimandl@hotmail.com
Jan 28-Feb 5, 2006 (Sat—Sun)	7/6 (HF)	FINLAND/ STOCKHOLM (TSC Expedition) Family Optional	11/15/05	\$1825 CS684 or \$705	David Eickhoff Jan Ferrell	713-825-6021 281-799-0001	eickhoff@hal-pc.org ferrellj@sbcglobal.net
Feb 4 -11, 2006 (Sat—Sat)	7/6 (PF)	ASPEN	10/13/05	\$1084 LS750	Jill St. Clair Tom Hogle	713-783-6945 713-256-7800	jstclair@hal-pc.org thogle@aurorafin.com
Feb 11-18, 2006 (Sat—Sat)	7/6 (KK)	BIG WHITE (TSC Winter Shootout)	12/12/05	\$1139	Jerry Montgomery Rita Cardenas	281-437-5467 281-353-2713	jerrymont@houston.rr.com rita.cardenas@bmo.com
Feb 25-Mar 4, 2006 (Sat—Sat)	7/6 (PF)	SNOWBIRD	12/12/05	\$1097 LS699	Bruce Baird Leslie Allison	281-496-4661 281-395-6067	bruce2skis@aol.com leslieallison@msn.com
Feb 24-28, 2006 (Fri—Tues)	4/4 (PF)	BRECKENRIDGE	10/17/05	\$560 LS329	Carol Cain	713-665-8121	cainsug@aol.com
Mar 11-18, 2006 (Sat—Sat)	7/6 (HF)	BIG MOUNTAIN (TSC Final Showdown)	12/7/05	\$1056 LS630	Bill Brown Bob Gottlieb	281-930-8472 281-486-0254	bill.a.brown@shell.com rgottlieb@houston.rr.com

Children prices dependent on age and sharing room with two paying adults. Prices subject to change by changes in the fuel surcharge, taxes and/or currency conversion.

Number of land packages may be limited.

Mark Your Calendars!

Come to the Sept. 12th General Meeting
to check out the Ski Trip Tables

Vice President of Trips

Kayleen Kill (KK)

(281) 293-9533

kayleen-kill@houston.rr.com

Director of Trips

Hope Flynn (HF)

713-621-5990

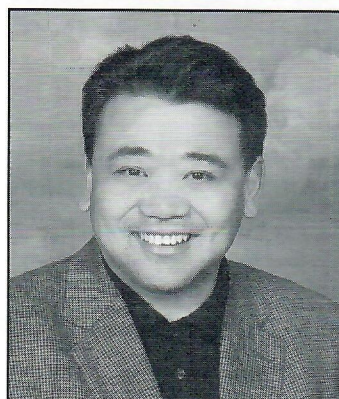
dohope@spacecityskiclub.org

Director of Trips

Patty Finch (PF)

936-271-9715

pfinch@lockeliddell.com



RE/MAX
Professional Group
Independently Owned and Operated

Steven Teoh

REALTOR®

Direct: 832-478-1188

Office: 281-894-1000

Fax: 832-201-7541

E-mail: StevenTeoh@remax.net

Web: Best-Houston-Homes.com



"INTO THE WEST" to Breckenridge
February 24-28, 2006

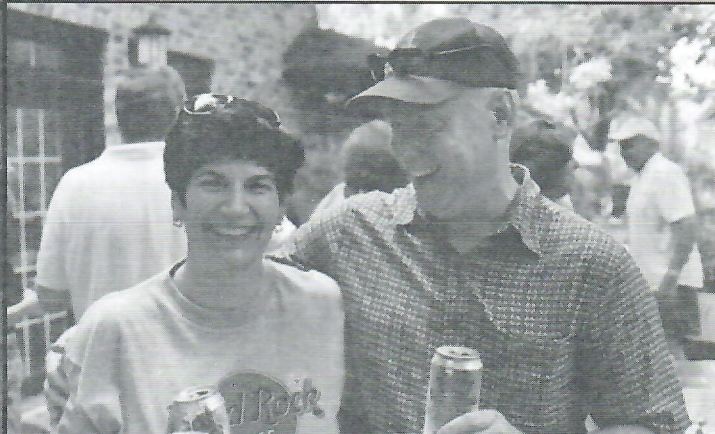
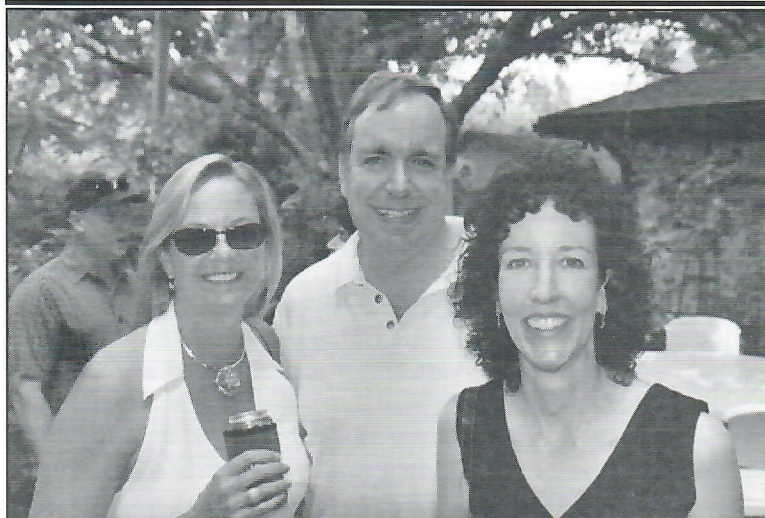
Get 4 days of skiing at one of Colorado's favorite
small towns for only 2 vacation days!

TC: Carol Cain, 713-665-8121 or 832-824-5290,
Cainsug@AOL.com or ccain@texaschildrenshospital.org

VOLUNTEER PARTY FUN!!

Over 90 hardworking SCSC volunteers got a chance to relax and have fun poolside thanks to the generosity of Ron Hayes and Judy Schiro.

They enjoyed a super day of swimming, water volleyball, eating fajitas, and socializing at the annual party. Thanks again for your contributions in 2004/2005.



Wanted!! Race Directors and Assistant Race Directors for 2005-2006 Ski Trips

For more information and to volunteer, contact your TC/ATC or SCSC Race Director Bob Wray at (713) 229-1347, rwray@bakerbotts.com



Safari & Climb Kilimanjaro

Early February, 2006

Contact Arlen Isham

(713) 455-4858

10/05

Trip Registration Form

(Complete ONE Registration Form and prepare ONE deposit check PER trip)

Each envelope must contain the registration form and deposit. Deposit is **\$150** per participant (\$300 for Finland).

Make the check payable to "SCSC" and write trip name and membership number(s) (from Sitzmarke address label) on the check.
Also, write the trip name on the outside of the envelope.

PLEASE PRINT CLEARLY—WE MUST BE ABLE TO READ THE DATA ON THIS FORM

Trip Name: _____

Trip Name: _____

Trip Dates _____ to _____

Trip Dates: _____ to _____

Participant #1

Name: _____

2005-06 Membership # _____

Address: _____

City _____ Zip _____

Phone(H) _____ (W) _____

Fax _____

E-Mail _____

Participant #2

Name: _____

2005-06 Membership # _____

Address: _____

City _____ Zip _____

Phone(H) _____ (W) _____

Fax _____

E-Mail _____

Please check one:

Full package ☐

Land package ☐

Please check one:

Full package ☐

Land package ☐

I understand the following (per standing rules 5.1 - 5.4): Cancellations after trip sign-up must be *in writing* to the Trip Coordinator and all cancellations are subject to a \$30 per person (\$100 per person on Finland) cancellation fee. If I cancel on or after the final payment date, I may forfeit the full amount paid if I cannot be replaced on the trip. Beginning with the 2004-05 season, Trip Transfers will no longer be permitted.

Signature(s) (Required) _____

Please mail your deposit check(s) and Trip Registration Form(s) to the appropriate Trip Coordinator (TC) below:

(Remember: Include the trip name and your membership number(s) on your check and the trip name on the outside of the envelope)

TRIP NAME	TC	Street	City, State	Zip Code	Telephone #
Keystone	Louella Steller	4829 Jessamine	Bellaire, TX	77401	713-666-2347
Vail (both trips)	Dana Wardell	11842 Briar Forest	Houston, TX	77077	281-497-8552
Steamboat (both trips)	Thuy Tran	15 Dusk Valley Court	Spring, TX	77379	281-376-0343
Mammoth	Bill Bomberger	12119 Alston Drive	Stafford, TX	77477	281-495-8668
Finland/Stockholm	David Eickhoff	15650 Pebble Lake	Houston, TX	77095	713-825-6021
Aspen	Jill St. Clair	8010 Meadowvale	Houston, TX	77063	713-783-6945
Big White	Jerry	2830 Lakeview Dr.	Missouri City, TX	77459	281-437-5467
Kelowna	Jerry	2830 Lakeview Dr.	Missouri City, TX	77459	281-437-5467
Snowbird	Bruce Baird	11330 Inwood Dr.	Houston, TX	77077	281-496-4661
Breckenridge	Carol Cain	5827 Moonmist Dr.	Houston, TX	77081	713-665-8121
Big Mountain	Bill Brown	2522 Pasadena Blvd	Deer Park, TX	77536	281-930-8472