



The Sitzmarke

SPACE CITY SKI CLUB

Vol. 33 No. 4

Aug., 2000



MEMBER
Texas Ski
Council



August Meeting Dates:

No General Meeting during the Summer

Next meeting September 11th, 2000

Happy Hour August 17th - Chanti's Restaurant

BULK RATE
U.S. POSTAGE
PAID
Permit # 9036
Houston, TX

DATED MATERIAL - DO NOT DELAY

SPACE CITY SKI CLUB
P.O. Box 22567
Houston, Texas 77227



SPACE CITY SKI CLUB 2000-01 EXECUTIVE COMMITTEE

PRESIDENT Stacey Ronczy
sronczy@ev1.net 713-861-6470
VP - PROGRAMS Joe Walker
joewalk@hal-pc.org 281-489-0379
VP - TRIPS Jane Orr
orr-vice@dellnet.com 281-568-5073
VP - MEMBERSHIP Mike Montgomery
mmont448@aol.com 281-282-0922
VP - PUBLICATIONS Charles Butler
cbutler@cbjd.net 281-655-8256
SECRETARY Nora Montgomery
nora.montgomery@sw.boeing.com 281-282-0922
TREASURER Marvin Volz
mtve@hal-pc.org 713-782-7118

DIRECTORS OF TRIPS

Patti Maudsley 713-532-1610
pgmaudslay@duke-energy.com
Roger Holzman 713-461-7604
rogholzman@aol.com

DIRECTOR OF PROGRAMS

Diane Stotz 713-862-9486
Diane.Stotz@ey.com

AUDITOR

RACE DIRECTOR

K. J. Oldroyd

TEXAS SKI COUNCIL

Council Representative

Jim Edwards

Council Representative-Alternate

Susan Blome

BOARD OF DIRECTORS

Richard Hall

Chairman

Gary Butler
Jim Edwards
Kathy Young
Elaine Sokoloff
Jeff Sarff

John Rice
Darlene Hirasaki
Louella Steller
Merrel Smith

SITZMARKESTAFF

Editor:

Charles Butler

SITZMARKE

The Sitzmarke is published monthly by the

SPACE CITY SKI CLUB

Printed by

HOLLYPROGRAPHICS

Volume 33, No. 3

July 2000

Head of the Lifeline

by Stacey Ronczy



Well, this is the issue you have been waiting for all summer - TADA! The Mail-In Signup! I know that you are really interested in Jane's article, so I will spare you here. We do need to take care of some business, though. Please read the Mail-In signup rules all the way through and follow the instructions. We want everyone to get on the trip they sign up for, so please, please, please, follow the rules stated under Mail-In signup.

Just another quick piece of business. The Executive Committee has reviewed the standing rules (they appear in the directory along with the By-laws for the club. If you have not read them, it might be interesting to review.) and voted on some changes. They are listed below:

New standing rule - 3.3D Trip Coordinators and Assistant Trip Coordinators may receive reduced compensation for unusual cost circumstances if approved by the Executive Committee during submission of the activity budget. Reimbursement will be handled as in Section 3.3A, B and C, except the total amount shall be that indicated on the approved activity budget

Suspended standing rule (for this year) - 2.1.A "A \$3.00 guest fee per person, per meeting will be charged." (I.e. - no guest fee will be charged at meetings this year)

Shadow Participants - Included in the price for Shadow Participants is a \$10 fee for club overhead.

If you have any questions about these or any other Standing Rules or By-Laws, please ask any of the officers or board members and we would be glad to explain them to you.

Good luck picking your trips. You have a fine selection!

SCSC Activity

Gourmet Dinner

The School of Culinary Arts

1900 Yorktown

\$30 (does not include drinks)

5 Course Gourmet Dinner

September 29 - Final Payment September 11

Contact:

Sue Salvage

3802 Kingston Vale Dr.

Houston, Tx. 77082

281-870-0762 or Sue.Salvage@mony.com

Auditor

Space City needs a volunteer to run the Audit chair. If you are interested and understand some Accounting, contact: **Stacey Ronczy** (sronczy@ev1.net or 713-861-6470)

or

Marvin Volz (mtve@hal-pc.org or 713-782-7118)

Features

- 2 Head of the Liftline
- 4 Ski Desk
- 5 Trip Schedule
- 6 VP of Programs
- 7 Activity Schedule
- 8 Keystone
- 8 Jackson Hole
- 9 Steamboat
- 10 Cortina, Italy
- 10 Whistler
- 11 Mt. Bachelor
- 11 Sugarbush
- 12 Vail
- 13 Heavenly I
- 14 Big Mountain
- 14 Panaroma, Canada
- 15 Miller Outdoor Theatre

SCSC Activity

Happy Hour

Chanti's Restaurant

1971 West Gray

In the River Oaks Shopping Center

W. Gray between Shepherd & Dunlavy

August 17, 2000

5:30 pm - 8:00 pm

713-840-0303

New Orleans Weekend Trip

Join us on **October 20-22, 2000**
for the party trip to New Orleans.

We will bus to New Orleans to spend 2 nights at

The Inn on Bourbon,
a Ramada Plaza Hotel located at
Bourbon and Toulouse Streets.

There is a \$50 deposit with a total cost of \$275.

For more information contact:

Ellen Bush (h) 281-997-1496 (w) 713-989-7684
(e-mail) ecbush@cmsenergy.com

or **Jeff Eastham** (w) 713-270-1443
(e-mail) gme@eastham-inc.com

or write to 3515 Woodbine Place, Pearland, TX 77584

CALENDAR

August

S	M	T	W	T	F	S
		1	2	3	4	5
6	7	8	9	10	11	12
13	14	15	16	17	18	19
20	21	22	23	24	25	26
27	28	29	30	31		

August

- 12 Summer Golf
- 17 Happy Hour - Chianti Restaurant
- 19 Windsurfing
- 26 Miller Outdoor Theatre
- 27 Bowling

September

S	M	T	W	T	F	S
					1	2
3	4	5	6	7	8	9
10	11	12	13	14	15	16
17	18	19	20	21	22	23
24	25	26	27	28	29	30

September

- 11 General Meeting
- 21 Happy Hour - Champs'
- 29 Goutmet Dinner

October

S	M	T	W	T	F	S
1	2	3	4	5	6	7
8	9	10	11	12	13	14
15	16	17	18	19	20	21
22	23	24	25	26	27	28
29	30	31				

October

- 1 Summer Golf
- 6-8 Beach Bash
- 9 General Meeting
- 19 Happy Hour
- 20-22 New Orleans
- 28 Halloween Party



Hello SCSCers'. We finally made it! This is the month that you get detailed information about this year's ski trips. All of your TCs and ATCs have worked very hard to complete the price negotiations to offer you a fantastic selection of ski trips. I personally want to thank each and every one of the TCs and ATCs (and DOTS too) for all of their diligent hard work preparing their budgets and presenting them to the executive committee. Planning these trips takes time, dedication and a sense of humor. Please don't forget to show your appreciation to these volunteers by thanking them and signing up for their trips early!

Mail-in sign-up is this month and we really need to see your support for these trips by signing up early. We are holding space (air seats) for these trips and would really hate to let them go (we probably won't be able to get them back later) because of lack of early support from all of you avid skiers and party animals. Yes, your TCs and ATCs are already planning the good times and parties for all of you to enjoy.

PLEASE PAY CLOSE ATTENTION TO THE INSTRUCTIONS REGARDING MAIL-IN SIGN-UP. We would hate to have you miss the trip of your dreams due to a technicality. Our general meeting, September 11, 2000, is also a perfect time to sign-up for your trips and to meet your TC and ATC.

There are so many great destinations this year that it will be hard for even me to decide which trips to take. Old favorite destinations like Jackson Hole, Big Mountain, Vail and Whistler await your arrival for guaranteed great skiing as well as some new and unique ski areas like Sugarbush and Panorama. We wanted to offer you something different this year and Sugarbush and Panorama are it. Expand your horizons, ski new and exciting ski areas that our club has never skied before. In addition to our club trips, we also have those wonderful TSC trips. Great destinations like Keystone (our Family Optional Trip), Steamboat, Mt. Bachelor and Heavenly. The TSC Expedition trip to Cortina promises to be a wonderful experience also.

We are looking forward to seeing you on these ski trips that promise to be great vacations and lots of fun. Again, **PLEASE PAY CLOSE ATTENTION TO THE MAIL-IN SIGN-UP INSTRUCTIONS.** Don't disappoint your TCs and ATCs



SHOW YOUR SUPPORT
SIGN-UP EARLY



Members: Be Considerate



When inquiring about trips or activities, please be considerate when contacting the TCs, ATCs or ACs. Volunteers give their phone numbers to the membership to aid in the promotion of the function, but **NO PHONE CALLS SHOULD BE MADE BEFORE 8:00 AM OR AFTER 10PM!** Also, if you call a work number, be respectful of their work time.

Remember - for the latest ski club information, membership inquiries, and activities - call the

**SPACE CITY SKI CLUB
HOT LINE
713-688-SCSC**

or
**Visit our Web Page
<http://www.spacecity.org>**

Dana Unlimited
Jewelry Especially for You

**Sterling Silver and Gem Stones
Available for home shows**

Dana Wardell
Houston, Texas 281-497-8552

LONG TERM CARE SPECIALIST

SARAH V. KOS
Field Underwriter for
CNA, Allianz, PennTreaty
American Travellers L.I.C. / Conesco

Regional Office	Office: 713.783.0167
9663 Judalon Ln.	Mobile: 713.392.2665
Houston, Texas 77063	Fax: 713.784.5855



Space City Ski Club 2000-2001 Trip Schedule

Trip Dates	Nights/ Ski Days	Trip Destination	Cost (See Notes)	Final Payment	Lodging	No. Skiers	TC/ATC (DOT)	Home Phone
No v 21-26, 2000 (Tue.-Sun.) Family Optional	5/4	KEYSTONE Colorado (TSC Fall Roundup)	\$675 C\$404 L\$342	9/11/00	Condos	28 L-4	Angie Westergren Jeanette Perini (RJH)	713-954-2114 713-467-6886
Jan 6-13, 2001 (Sat-Sat)	7/6	JACKSON HOLE Wyoming	\$837 L\$548	10/9/00	Condos	40 L-8	Judy Katany Sue Bohnert (RJH)	713-864-7531 713-467-5027
Jan 13-20, 2001 (Sat-Sat)	7/6	STEAMBOAT I Colorado (TSC Traditional)	\$799 L\$447	11/6/00	Condos	80 L-10	J.R. Ronczy Carol Cain (PGM)	713-861-6470 713-665-8121
Jan. 16-21, 2001 (Tues-Sun.)	5/4	STEAMBOAT II Colorado (TSC Traditional)	\$753 L\$344	11/6/00	Condos	44 L-10	Marsha Lutz Sandra Perry (PGM)	281-870-9724 281-488-1033
Jan 27-Feb 4, 2001 (Sat-Sun)	7/5	CORTINA Italy (TSC Expedition)	\$1339	10/9/00	Hotel	64	Sean O'Brien Barbara Brescian (PGM)	713-787-9762 281-242-7908
Feb 3-10, 2001 (Sat-Sat)	7/6	WHISTLER Canada	\$923	11/13/00	Condos	40	Roger Sahni Mary Ann Soto (RJH)	281-493-4414 281-679-5686
Feb 10-17, 2001 (Sat-Sat)	7/6	MT. BACHELOR Oregon (TSC Winter Shootout)	\$888 L\$520	11/14/00	Condos	64 L-4	Phillip Vice Lori Gilliland (PGM)	281-568-5073 281-493-3060
Feb 24-Mar 3, 2001 (Sat-Sat)	7/6	SUGARBUSH Vermont	\$837 L\$419	12/11/00	Condos	32 (44) L-4	Karla Darden David George (RJH)	409-851-2829 281-320-2859
Mar 10-17, 2001 (Sat-Sat)	7/6	VAIL Colorado	\$999 L\$641	12/21/00	Condos	40 L-8	Jessica Halter Linda Beebe (PGM)	281-364-9972 713-520-9850
Mar 17-24, 2001 (Sat-Sat)	7/6	HEAVENLY I Nevada (TSC Final Showdown)	\$740 L\$353	12/21/00	Hotel	64 L-10	Curt Frisby Christine March (RJH)	713-807-0102 281-491-1129
Mar 20-25, 2001 (Tues-Sun)	5/4	HEAVENLY II Nevada (TSC Final Showdown)	\$696 L\$295	12/11/00	Hotel	44 L-10	Mary Simpson Doug Broussard (RJH)	713-436-0957 713-665-3704
Mar 24-31, 2001 (Sat-Sat)	7/6	BIG MOUNTAIN Montana	\$796 L\$387	12/11/00	Hotel	42 L-4	Jeff Eastham Kimberly Smith (PGM)	281-261-1180 713-690-6753
Mar 31-Apr 5 (Sat-Thurs)	4/3	PANORAMA Canada	\$677	1/8/01	Condos	32	Christie Burke Joanne Fore (PGM)	713-465-5644 713-723-4707

**** Notes:** L=Land Package-excludes air; certain trips excludes ground transportation C=child Call TC about Child prices on Keystone trip.

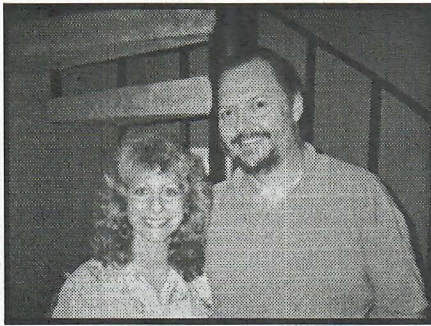
Director of Trips
Patti Maudslay (PGM)
713-532-1610
pgmaudslay@duke-energy.com

Vice President of Trips
Jane Orr
281-568-5073
orr-vice@dellnet.com

Director of Trips
Roger Holzman (RJH)
713-461-7604
rogholzman@aol.com

V. P. Programs

by Joe Walker and Diane Stotz



Well folks, Diane and I have been plugging along adding new activities. We hope you like what we have done so far. We have many more fun activities in mind. The trick is to balance the timing and cost so no month has too many expensive choices. Perhaps the greater trick is to find those all so important volunteers who are willing to make each event happen. If you would like to help, give Diane or myself a call or e-mail. We can work out the details later. If there is something special you would like to see the club do, say so. If you just want to help, there is an endless number of ways you can spend rewarding time helping others have a good time (and having a good time yourself in the process).

Some of the best things the club does each year are charity related activities. Our pet charity, of course, is the Sunshine Kids. Look them up on the Internet, "http://sunshinekids.org", if you want to know more. A better, more worthwhile, charity is hard to find. We have also participated in the Houston Marathon, Channel 8, and other

worthwhile endeavors on a more or less regular basis. We need people to help the ski club help others.

Go to the happy hours if possible. The happy hours are great ways to make and renew friendships and sign up for upcoming events. Ask around, the happy hours have been a ton of fun. Bring a friend or two. As always, happy hours, activities, and non-ski trips are not limited to ski club members only.

Joe and Diane

SCSC Activity Grand Canyon River Rafting

July 30 to August 5, 2001

(dates have been changed)

Signup begins Aug. 1st (no earlier postmarks accepted)

\$1,830 Land Package \$300 deposit

7 days, 6 nights, 190 mile guided motorized raft trip,
two rafts, 24 people, awesome rapids, hikes, waterfalls, and wildlife.

Start from Las Vegas.

Diane McKenzie

3540 Miramar

Shoreacres, TX. 77571

281-471-5291 or Dmckenzie4@aol.com



SCSC Activity

A Mid-Summer's Night Golf Tournament

Saturday, August 12, 2000



Hackberry Golf Club

7777 S. Dairy Ashford

Ph# 281-575-7791

(Located approximately 1 block south of Bellaire)

Contact

Concietta Ruggiero or Robbin Anderson

(281)-293-7637

281-980-8969

ruggiero@hal-pc.org



CJM & Associates

Specialists in Job Assessment and Evaluation
Authorized Dealer for Profiles International

C.J. Marsolek
President

1407 N. Gabriel River Circle • Sugar Land, TX 77478-5336
Phone: 281.265.3437 • Fax: 281.265.3437
Cellular: 281.773.4744 • www.cjmandassociates.bizonthe.net



Debbie
DEBBIE ABADIE, CRS

BROKER/PARTNER
CERTIFIED RESIDENTIAL SPECIALIST

KELLER WILLIAMS
REALTY

713-664-6400

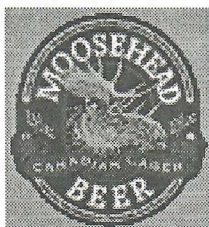


**GIANT
BANNERS
& SIGNS**

Full Color Printing

713-781-2020

fax 713781-1448 dMail Oneday2020@aol.com



Texas Ski Council Sponsors 2000-2001

SALOMON

freedom action sports

SUBARU

The Beauty of All-Wheel Drive®



Activity Coordinators

Space City needs volunteers to plan and run various activities in the upcoming year.

If you have an activity that you would like to run,

contact

Joe Walker (281-489-0379 or joewalk@hal-pc.org)
or **Diane Stotz** (713-862-9486 or diane.stotz@ey.com)

<i>Activity</i>	<i>Activity Coordinator</i>	<i>Activity Date</i>	<i>Final Payment Date</i>	<i>Cost</i>
Summer Golf	Concietta Ruggiero (281)-293-7637 ruggiero@hal-pc.org	August 12, 2000	August 8, 2000	\$ 35.00
Windsurfing	Tommy Thompson (713)-995-1772 tommy2@airmail.net	August 19, 2000	August 4, 2000	\$ 22.00
Miller Outdoor Theatre - The Barber of Seville	Nora Montgomery (281)-282-0922 Nora.Montgomery@SW.- Boeing.com	August 26, 2000	August 26, 2000	N/A
Bowling at Palace Lanes- Bellaire	Nancy Sarff (713)-461-9665 jeffsarff@worldnet.att.net	August 27, 2000	August 20, 2000	\$ 15.00
Gourmet Dinner	Sue Salvage 3802 Kingston Vale Dr Sue_Salvage@mony.com	September 29, 2000	September 11, 2000	\$ 30.00
Road Rally	Julie Raley (281)-873-8730 davisralley@hotmail.com	October 1, 2000	September 18, 2000	\$ 20.00
Beach Bash	Gene Soo (281)-530-8559 genesoo@ev1.net	October 6-8, 2000	September 11, 2000	\$110.00
New Orleans Weekend Trip	Ellen Bush (281)-997-1496 ecbush@cmsenergy.com	October 20-22, 2000	September 20, 2000	\$ 258.00
Halloween Party	Steven Teoh (713)-582-8060 steoh@rig4sale.com	October 28, 2000	October 9, 2000	\$ 21.00



Dawson & Chao
Real Estate

Mike Dawson
Civil Engineer
Real Estate Broker


Office: (713) 266-2633
Cell: (713) 301-9533
Fax: (713) 334-8898

8989 Westheimer #126
Houston, Texas 77063




**TRADESHOW
DISPLAYS**
Full Color Printing

713-781-2020
fax 713781-1448 dMail Oneday2020@aol.com



BRANT B. WILLIAMS
Agent



STATE FARM INSURANCE COMPANIES
HOME OFFICES: BLOOMINGTON, ILLINOIS

"Like a good neighbor, State Farm is there" ®

River Oaks Bank Building
2001 Kirby Drive, Suite 612
Houston, TX 77019
Bus.: (713) 521-0400
(800) 637-6809
Fax: (713) 521-0430

Keystone



TSC Fall Roundup
November 21 - 26, 2000
(Tuesday - Sunday)

Full: \$675
Land: \$342
Child: \$404*

Bring the family and spend your Thanksgiving at KeystoneThe Texas Ski Council is offering its Fall Roundup trip to Keystone Colorado, Tuesday, November 21 through Sunday, November 26. This will be a family optional trip with 4 full days of skiing and plenty of activities for the whole family.

Our flight will leave Houston Intercontinental Tuesday morning with a direct flight to Denver. After an 80-mile (approximately) bus trip to the Keystone Resort, we will check into our 2-bedrooms, 2-bath condominiums in the Forest neighborhood of Keystone, which is an 8-10 minute (approximately 1 mile with stops) shuttle ride to the mountain. All units have television, fireplace, and have fully equipped kitchens. Every neighborhood at Keystone has a Jacuzzi or swimming pool nearby. Keystone also has a Fitness and Business Center on site.

Three-day or more multi day lift tickets are fully interchangeable at Keystone, Breckenridge, and Arapahoe Basin, as well as, skiing and riding privileges at Vail and Beaver Creek. Keystone's FREE intra-resort scheduled service transports you throughout the resort and to Arapahoe Basin. The Ski KAB Express offers free shuttle service to Breckenridge. There is also a convenient shuttle service to Vail for a nominal charge.

Keystone has one of the largest snowmaking operations in North America with unrivaled grooming standards and guaranteed snow. Keystone also has the largest night skiing operations in Colorado with 17 runs, including a lit terrain park and half pipe. There are other activities to enjoy such as snowshoeing, cross-country skiing, sleigh rides, ice-skating, snowmobiling, snowbiking to mention a few. Ski lessons are also available whether you are a beginner or just need a refresher course. For families there are special activities just for the kids like fireside storytelling, stargazing sessions and movies night. A Children's Center provides a supervised environment for kids 2 months to 12 years. A Teen Center features video games, movies, snacks, and a chance to surf the net.

Shopping is available in over dozen specialty shops in Keystone Village, at the base of Keystone Mountain and the new River Run Village at the base of the Gondola. Shopping is also available at nearby Silverthorne, home to approximately 80 factory outlet shops.

This is a TSC trip, so be ready to **PARTY**, have some **FUN** and make some new **FRIENDS**. Additional activities will be offered such as Thanksgiving dinner on Thursday, parties, NASTAR racing, happy hour, and an awards banquet on Saturday night. Your TC and ATC plan to create an environment where people get to know each other and have a GREAT time together.

**SO THIS THANKSGIVING DO SOMETHING DIFFERENT,
JOIN US ON A SKI TRIP YOU WILL NOT FORGET.**

TC: Angie Westergren 713-266-5523 awestergren@reoc.com
ATC: Jeanette Perini 713-467-6886 jpperini@aol.com

*contact TC about Child pricing

Jackson Hole



January 6 - 13, 2001
(Saturday -
Saturday)

Full: \$837
Land: \$507

WINTER ADVENTURE IN THE WILD WILD WEST! Start off the Year 2001 with a trip to Jackson Hole, Wyoming which is what the West is all about – uncrowded slopes, deep powder, breathtaking views and terrain to suit everyone. Come experience majestic mountains and legendary skiing, all in a friendly, exciting Western atmosphere! On an average day at the Jackson Hole Ski Resort, there are only 1,750 skiers and snowboarders on 2,500 acres of available terrain at the ski area, offering one of the lowest skier densities (one skier per 1-1/2 acres!) of any ski resort in the country.

Escape with us Saturday morning on United Airlines and, after a quick connection in Denver, for a mid-day arrival at Jackson Hole. From there, we have only a short 30 – 45 minute bus ride to the Wind River Condominiums where we will be staying in 4 bed/4 bath condos located right at the mountain in Teton Village. And YES, we are planning on a grocery stop along the way so we can stock up on goodies for the week! (Please note that bedding arrangements are not guaranteed. Double beds may not be available for couples.) Catch the frequent shuttle to the lifts to experience a winter playground like no other.

The mountain resort boasts of the longest continuous vertical rise of any ski area in the U.S...4,139 feet from the valley floor to the top of Rendezvous Mountain, with a 63-passenger aerial tram that transports skiers from bottom to top in 12 minutes. Or access other numerous runs via high-speed quads. Enjoy the natural wonders of two National Parks, 8,000 grazing elk less than one mile north of the Old West town of Jackson and a variety of unrivaled vacation opportunities. Catch the excitement of skiing and snowboarding awesome steeps, gentle bowls and wide-open terrain. Catering to all levels of experience, this venue provides the best skiing has to offer with miles of groomed trails and acres of the most awe-inspiring scenery anywhere in the world. Frequent local shuttles are available to transport us the short 5 – 10 minute ride to the lifts to experience this winter playground which is like no other. As an added bonus, our lift ticket package also includes the opportunity to ski a day at the Grand Targhee ski area, another of Wyoming's premier ski locations.

Other activities will likely include an arrival orientation get together on the eve of our arrival, a Wine and Cheese Party, and a group dinner at the end of the week. There are also optional activities available like snowmobiling in Yellowstone Park or on local trails, or dog sledding, barn dancing or a hot springs trip.

We get to sleep in a bit on our departure day, head for home around mid-afternoon, and arrive back in Houston about 10 p.m.

JOIN US FOR THE BEST OF THE WEST!

TC: Judy Katany 713-840-8080 jkatany@brco.com
ATC: Sue Bohnert 713-438-6176 sue.bohnert@airliquide.com

SteamBoat I



TSC Traditional
January 13 - 20, 2001
(Saturday - Saturday)

Full: \$799
Land: \$447

Ever been to Steamboat? Here's your chance for a great time with our group from Steamboat I, the long trip, and added attraction of being the TSC Traditional trip.

STEAMBOAT LOVES TEXAS and TEXANS and finds extra excitement hosting the annual traditional trip. Where else in Colorado will you find the famous champagne powder and over 25 feet of snow? Surrounded by cattle ranches, Steamboat Springs is truly a ski town with its roots in the real west. Bring your cowboy hat and get ready to party!

Speaking of "real west", 2001 will mark the Cowboy Downhill's 27th year. This Steamboat tradition brings the very best Rodeo riders in the country for a day of racing (on skis that is). The cowboys go head to head in a dual slalom. This dual slalom includes roping a mountain host and saddling a straw horse. The day ends with the famous "Steamboat Stampede" in which all the cowboys go down the race course at once. Be there for a close-up view with the group from Space City Ski Club, Steamboat I.

On Saturday, January 13th, we'll leave early for the flight to Denver, then bus to Steamboat Springs, CO. We'll arrive early enough to settle in, rent equipment, unpack and - dare I say - "start the party?" We'll have movies, music and games to make the bus ride memorable. And, a special section, for those who just want to rest! I've heard a rumor that there will not be the usual soggy Subway's on board for lunch. We've consulted Martha Stewart for proper bus dining. O.K. so it's not exactly Martha, maybe John Stewart?

J.R. and Carol are planning as much fun as the law allows. The trip party will include the group from the short trip, and we're organizing some extra group outings available with pre-trip reservations. Possibly a sleigh ride dinner, snowmobiling, a hot springs outing or snowcat skiing. J.R.'s choice, get ready!

We're staying at the Timber Run Condos. Timber Run has a shuttle service to make our lives more mobile, but for the restless the walk is short! We'll have the usual two bedroom, two bath condos.

We're returning Sat. January 20th, early enough to be ready for life as usual on Sunday.

Keep your eye out for the latest plans!

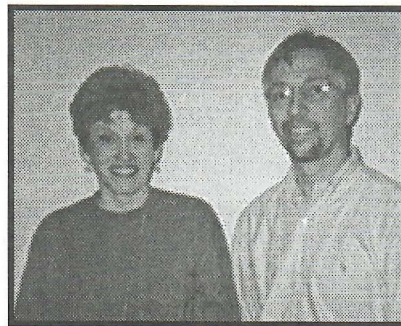
TC: J.R. Ronczy 713-861-6470 jrlrkhou@airmail.net
ATC: Carol Cain 713-665-8121 cainsug@aol.com

Star
FURNITURE

Linda Beebee
Sales Consultant

6868 Southwest Freeway
Houston Tx 77074

SteamBoat II



TSC Traditional
January 16 - 21, 2001
(Tuesday - Sunday)

Full: \$753
Land: \$344

Don't Miss The Boat! Steamboat is hosting the TSC Traditional Ski Week. Nestled in Yampa Valley, Steamboat is Colorado's second largest mountain with a 3,668-ft. vertical drop, 2,939 acres of terrain and 141 trails (one 3 miles long). The area averages about 30 ft. of champagne powder snow annually. Ski difficulty is 13% beginner, 56% intermediate, 30% difficult.

This trip is perfect for those that don't want a 7-day ski trip. We arrive Tuesday in time to unpack, rent equipment, go to a wine and cheese party and catch up with the Steamboat I gang. Then we stay Saturday, after the crowds have left, for more skiing and a special event the last evening. Our trip captures the best of both travel worlds! The resort is not close to Denver - so no local crowds - but easy to get to quickly, arriving at Timber Run Condos less than 4 hours after departing Houston due to our **nonstop flight from Houston to Hayden** - the local airport! Timber Run is well located - on a shuttle route but close enough to walk to the slopes.

Steamboat is a wonderful ski resort with true western heritage and hospitality! It captures the romance from its old west, early pioneer days. There are trail names such as Calf Roper, Longhorn, Buckshot and a high-speed quad chairlift named Pony Express. This year's TSC Traditional coincides with the well-known, annual Cowboy Downhill Race. While we won't arrive in time to see the rodeo cowboys in their playful races, we can meet them at the party afterwards and hear some tall tales!

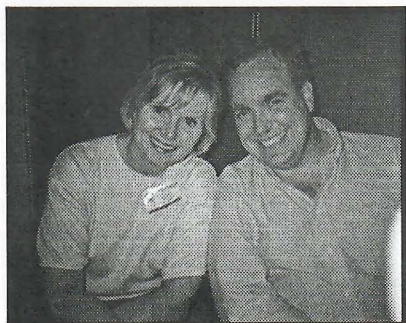
Besides skiing, Steamboat offers snowmobiles, dogsleds, hot-air balloons, ice skating, sleigh rides, and mountain tubing. You can get a real feel for the cowboy experience by visiting one of several ranches. Explore the backcountry on cross-country skis or snowshoes and if you still have energy, try your skill at ice/rock climbing the 230 Ft. Fish Creek Waterfall. If you didn't get enough skiing in during the day, hit the slopes for night skiing on 7 trails.

Steamboat offers more than 70 bars and restaurants. If you're looking for art, clothing or souvenirs, shopping is available in four areas: Gondola Square, Ski Time Square, Central Park and Old Town. Besides the Cowboy Downhill, TSC races and final awards party, the resort is planning mountain tours, poker pub crawl and an Austin Powers party! Après ski happy hours will be a daily affair! A party is planned with Steamboat I to meet up with fellow SCSCers, share info about the mountain, town, and, of course, scoop on each other!! We are also planning an exciting optional event for Saturday night that includes a group dinner, followed by relaxing under a beautiful starlit sky (hopefully!) in the famous Strawberry Park natural hot springs. What a way to end a great ski trip! But wait! There's time on Sunday to shop, ski a ° day or just sleep if all the fun has worn you out!

TC: Marsha Lutz 281-870-9724 mlutz@ermsw.com
ATC: Sandy Perry 281-488-1033 sandra.wellhausenperry@gte.net



Cortina, Italy



TSC Expedition
January 27 -
February 4, 2001
(Saturday - Sunday)

Full: \$1339

Extraordinary skiing, exciting excursions, exceptional shopping await Space City members who travel to Cortina – Queen of the chic Italian winter sports scene. This jewel of a village features 5 different skiing areas sporting 90 miles of more than 100 wide ski slopes, smart boutiques by day and riveting nightlife when night falls. There's even ice disco dancing at the Olympic ice skating rink. Skier or not, take the cable car to Tofana di Mezzoforan and catch an awesome view clear down to the Venetian lagoon.

Located in the wide sunny Ampezzo valley, Cortina is surrounded by the spectacular backdrop of the Dolomites with their famous vertical sides and pink rock. Cortina is part of the Dolomiti Superski area – 750 miles of skiing with 52 lifts and 6 cable cars and lifts galore. The Super Dolomiti ski area is the world's largest available on a single lift pass and connected by slopes, lifts and ski buses. Then there's the Olympic ski jump and Olympic bobsleigh track. For gutsy SCSCers, try the 4-man bob service down the Olympic racetrack or snow rafting by rubber dinghy at 60 miles an hour. The largest and best-known Italian ski school awaits those who want to fine-tune their turns. And how about that gourmet cuisine on the mountain?

After an invigorating day on the slopes, return to the comfort and hospitality of your traditional Cortina hotel – the four star Bellevue. Browse through the trendy shops, enjoy the local crafts of joinery, woodcarving and wrought iron work, and visit the art galleries. Later, dine on delicious regional specialties accompanied by Italian vino, or maybe German or Austrian beer – we're near the border!

To begin our trip, we'll wing to Venice and after a scenic ride north on our private motor coach; the hospitality of Cortina awaits us. Cortina plans a memorable opening ceremony and welcome party for Texas skiers in the village square. A torchlight parade and local music will highlight the Mayor's greetings. And, of course, no festivity is complete without liquid refreshment! Midweek, skiers and nonskiers alike will take the cable car to a complimentary party atop the Faloria Mountain.

Travel early or stay over and enjoy the 3 or 4-day pre or post trip. Locations under consideration now are Venice/Florence and Rome/Naples/Amalfi Coast. Stay tuned!

TC: Sean O'Brien 713-787-9762

sbobrien@trcsolutions.com

ATC: Barbara Brescian 281-242-7908 bbrescian@aol.com

Whistler



February 3 - 10, 2001
(Saturday - Saturday)

Full: \$923

SCSC Members don't pass this one up; this will truly be a vacation of a lifetime in a resort where the skiing and riding are second to none, the dining is world-class, and the hot tubs are plentiful.

Whistler is an award-winning resort and is rated the #1 ski resort in North America. It is the largest ski area on the continent with 7,071 acres of skiable terrain. Whistler/Blackcomb is 20% novice, 55% intermediate and 25% expert, ensuring that skiers and snowboarders of every level and age group have the experience of a lifetime. Whistler/Blackcomb has 12 massive alpine bowls including 3 glaciers; the 2 greatest vertical rise ski mountains in North America; 5 separate mountain bases, all within 5 minutes of each other and all with high-speed lifts. **Whistler Mountain** has more than 100 marked trails plus unlimited options on seven alpine bowls, one of which is a glacier. **Blackcomb Mountain** also has more than 100 marked trails plus unlimited options on five alpine bowls, two of which are glaciers. The trails include steep powder chutes, challenging mogul fields, secluded tree skiing and groomed-to-perfection cruising runs. Virtually every property and amenity in Whistler are within walking distance to the lifts of each mountain.

And if this is not enough other activities include: *cross-country skiing* on more than 28 kilometers (17.5 miles) of tract-set cross-country trails for skiers of all levels; *flightseeing* include breathtaking scenic glacier tours, landings, heli-picnics, backcountry skiing and snowshoeing; *heli-skiing* for intermediate and advance skiers who are looking to add a thrilling new dimension to their ski vacation includes one-day, 3-run fully guided helicopter vertical lift of 8,000-10,000 feet (professional video service available).

We are flying to Vancouver via American Airlines. We will ride the scenic Pacific Highway enroute to our Whistler/Blackcomb vacation with a stop at the Shannon Falls where the water fall is taller than that of Niagara Falls! We are staying at the Horstman House Condominiums which opened in May 2000. Each condo is comprised of a living room, kitchen, 2 bed/2 bath rooms with king size and split-king size beds. Ski-in convenience and heated outdoor pool and hot tubs.

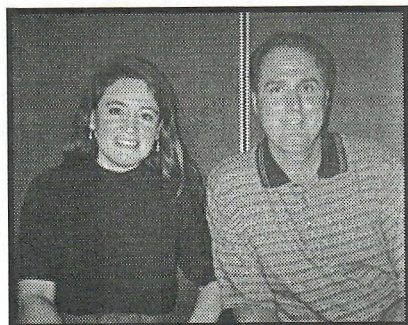
ADDED BONUS: The U.S. dollar exchange rate makes this trip even more affordable!

TC: Roger Sahni 281-493-4414

enviropetroleum@yahoo.com

ATC: Mary Ann Soto 281-679-5686

Mt. Bachelor



**TSC Winter
Shootout**
February 10 - 17,
2001
(Saturday - Saturday)
Full: \$888
Land: \$520

Bring your sweetheart, maybe you'll meet your sweetheart (Is that why they call it Mt. Bachelor?) or just join us for 6 sweet days of alpine skiing and 7 nights of fun during Valentines week 2001 at Mt. Bachelor, one of the great legends of the Northwest.

Every year over 300 inches of light, dry high-Cascade powder drops right in the lap of Mt. Bachelor. Every tree, chute, slope, bowl and glade is covered with the stuff. By golly, it is a veritable white fest! That's why skiers & snowboarders from all over the world go to Mt. Bachelor every year!

A towering 9,065-foot solo giant, Mt. Bachelor offers 70 runs well distributed across 360 degrees of this extinct volcano that rises up above the surrounding pine forest. With a summit altitude of 9,065 feet & a base elevation of 5,700 feet, Mt. Bachelor should be especially appealing to those who have trouble with the typical Colorado summit altitudes of 11,000 to 12,000 feet. Seven high-speed express chairs (13 lifts in all) will whisk you across 3,686 skiable acres. Because of computerization, lines of any kind are practically unheard of.

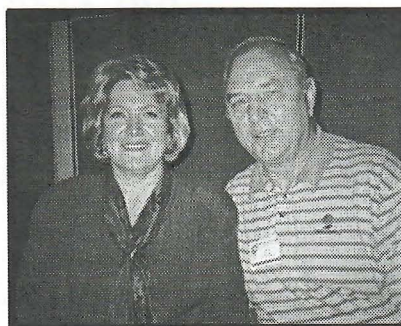
Because Mt. Bachelor is in the heart of virgin wilderness, with no development off the slopes for miles in all directions, you will find the cross-country skiing to be especially exquisite, and unbelievably convenient. Right at the base of the mountain is the Cross Country Center, a sophisticated lodge at the head of 12 trails — 56 kilometers of machine-groomed tracks — winding through the most pristine, breathtaking landscape to ever challenge the senses. In addition to Alpine Skiing, Snowboarding & X-Country skiing, Mt. Bachelor offers Ice Skating, Sleigh Rides, Snowshoeing, Snowmobiling and Dog Sled Rides.

We will be spending 7 nights at the Sunriver Resort in 2 Bedroom, 2 Bath Condominiums. The condos include 2 full baths, full kitchen & amenities, large living space & fireplace. The resort offers complimentary shuttle service to the mountain, heated pools & hot tubs. We will be flying round trip into Portland, Or. & travel by bus from the Portland Airport to the Sunriver Resort. The full package to Mt. Bachelor is \$888. We are negotiating airfare & there is a GOOD chance that we will see a significant decrease in price, which will be totally passed on to YOU!!

So, avoid another season of rocks, sticks, stumps, ice & closed runs. Join us at Mt. Bachelor where a blanket of early season snow and an average annual snowfall over the past five years of 400 inches provides the best and longest on-snow season in the lower 48 states.

TC: **Phillip Vice** 281-568-5073 orr-vice@dellnet.com
ATC: **Lori Gilliland** 281- 493-3060 lgilliland@covenant.com

Sugarbush



February 24 - March
3, 2001
(Saturday - Saturday)

Full: \$837
Land: \$419

WHAT A SURPRISE!!! AND YOU THOUGHT YOU KNEW ALL ABOUT SKIING IN THE EAST!!!! Be careful reading this...you just may find out you are wrong!! This historic and charming ski area was named by Ski Magazine as one of "North America's Top Ten Ski Resorts". Tucked away in the beautiful Green Mountain Range, it has the best snow conditions in Vermont, and is the only eastern ski resort to make the list! A 6-day lift pass will get you 6 ° days of great skiing over 3,500 acres spread between 6 different mountains. (And you will be able to ski ° day the last day!) There will be plenty of snow... this is the first Northeast area to open and the last to close. In fact, the resort received over 350 feet of snow in 3 of the last 4 seasons! They also maintain state-of-the-art snow making equipment and have 8 new grooming machines.

Sugarbush has something for everyone. There are 2 separate trail systems on 2 peaks linked by a 9-minute quad chair lift with an awesome view. With a vertical drop of 2,650 feet, there are 18 lifts and 115 trails for skiing and snowboarding that are 22% beginner, 46% intermediate, and 32% advanced & expert.

But be prepared for a surprise...this unique area will be a refreshing change from the traditional western ski areas. In keeping with the New England tradition, there are no fast food joints, strip malls, and stoplights! Sugarbush Village offers dining and the nearby towns of Waitsfield and Warren, have cozy restaurants and bars and plenty of shopping. In just minutes you can ride the shuttle to either of these historic towns for after hours partying or relaxation. There is also ice-skating, cross-country skiing or snowshoeing, horse-drawn sleighs, or theatres. It's all there waiting for you!

We're flying United Airlines to Burlington and boarding a luxury bus for quick 1-hour ride through the beautiful Vermont countryside. Once there, we're staying at the Bridges Family Resort and Tennis Club. Located only a 1/3 mile from Sugarbush Village and the base of the mountain, it is right on the shuttle route.

So be adventurous and join us for some great skiing in Old Vermont! The reps will be escorting us from the Burlington airport to the lodge, helping us get settled in, and hosting a party for us. They are really rolling out the red carpet for SCSC!

IT'S PURE VERMONT!!

TC: **Karla Darden** 936-851-2829 kmdarden@aol.com
ATC: **David George** 281-320-2859 dlgeorge@gateway.net

Vail



March 10 - 17, 2001
(Saturday - Saturday)

Full: \$999
Land: \$641

Vail is the **BIGGEST** and the **BEST** trip this year! It's the **BIGGEST** single ski area in the USA with Linda and Jessica promising to take the **BEST** care of you! SCSC participants will enjoy a wide variety of skiing terrains, over 120 restaurant choices, bountiful shopping in more than 225 shops, and entertaining nightlife. VAIL... something for **EVERYONE!**

With over 4000 acres of skiable terrain stretching for seven miles, Vail has a vertical drop of 3,330 feet and an elevation of 11,450 feet. Trails are 32% beginner, 36% intermediate, and 32% advanced/expert. From 30 lifts, (including 8 express quads and one gondola), beginner skiers/riders can cruise the scenic glades with Linda who is also a beginner. Seasoned skiers/riders can hit the slopes with Jessica to explore the Frontside challenges and seven legendary "back bowls." With an average annual snowfall of 27', Vail is truly a skier/riders paradise.

Vail has plenty to offer **THRILLSEEKERS**. How about bobsledding at 40 mph...it's easy...just lay down and try not to die!!! OR something called Thrill Sledding...a nighttime downhill headfirst tour. How about parascending... (not sure what that is, but we'll find

out!) or snow biking at twilight using a headlamp...you want me to put a **BIKE** with skis instead of wheels between my legs and head down the mountain in near darkness with short skis on **MY** feet??? **RIGHT!!!**

More **NORMAL** activities, aside from bountiful shopping, of course, might include tubing, ice skating, or laser tag at 10,000 feet at the new Adventure Ridge. Also offered are dog sledding, hot air ballooning, sleigh rides, winter fly fishing, sport shooting, snowmobile/snowcat/snowshoe tours, and cross country skiing on **TOP** of the mountain or on Vail's golf course. And if all of that activity wears you out, just relax and be pampered at one of Vail's many spas. The possibilities are **ENDLESS!**

We'll fly non-stop to Denver and stay at **VAIL INTERNATIONAL**, a favorite of past SCSC trips. Situated between Vail Village and Lionshead, it is close to restaurants, shops and nightlife. A short 4-minute walk will get you to Eagle Bahn Gondola or Born Free Express Lift. If walking isn't in your plan, Vail's reliable shuttle service stops right at our front door. Each 2BR/2Bath condo has a full kitchen, fireplace, and daily maid service with a common laundry area, heated outdoor swimming pool, hot tub and two saunas. Grocery delivery is even available!

Your TC and ATC will plan an itinerary for lunches, dinners, pub crawls, and other adventures for every day of the trip. You can choose to join the group or "freelance" on your own. But we **PROMISE** you will **NOT** be bored or lonely for company! This is a **PARTY** trip with a St. Patty's theme! We'll just start the Irish celebration a week early! Don't miss it because the stories will be guarded...what happens on the mountain, **STAYS** on the mountain. Let's **RAISE** some **HAIL** in **VAIL!!!**

TC: **Jessica Halter** 281-364-9972 jhalter@conroe.isd.tenet.edu
ATC: **Linda Beebe** 713-520-6305



SCSC Activity

WindSurfing

Aug. 19th
Final Payment Aug. 4th

\$22.00

Contact
Tommy Thompson
713-995-1772
tommy2@airmail.net



SCSC Activity

Bowling

Palace Lanes-Bellaire
4191 Bellaire Blvd

Aug 27th
Final Payment Aug. 20th

\$ 15.00

Contact
Nancy Sarff
713-461-9665
jeffsarff@worldnet.att.net



SCSC Activity

Miller Outdoor Theatre

July 22th: The Who's Tommy
and Aug. 26th: The Barber of Seville

FREE

Contact
Nora Montgomery
281-282-0922
Nora.Montgomery@SW.Boeing.com



OSWALD CASTILLO REALTOR®

(281) 496-6660 BUS., (281) 588-1328 FAX
(713) 919-1671 VOICE MAIL
ojc1@wt.net EMAIL

COLDWELL BANKER®

UNITED, REALTORS®
14520 MEMORIAL DR., #106
HOUSTON, TX 77079
WEBSITE oswaldcastillo.REALTOR.com



Each Office is Independently
Owned And Operated

Heavenly I



TSC Final Showdown

March 17 - 24, 2001
(Saturday - Saturday)

Full: \$740
Land: \$353

Boxer Rebellion

In 1998 five skiers from Texas were burned at the stake by California locals somewhere near the Nevada-California state line just above the Sky Express Chair at Heavenly ski resort. Just days earlier a large group of skiers from Texas launched an invasion of the resort with an attempt at expropriation. The Texans, apparently frustrated by the fact that current territorial boundaries of the state of Texas lacks snow and mountains adequate for skiing, mounted a plot to take over the area, then petition congress to transfer the territory from California to Texas.

Spies, believed to be native born Californians but current residents of Texas, had infiltrated the group. Disguised as skiers from Houston, they were able to obtain the confidence of the group of invaders and learn of the plot to expatriate their native soil. When the plot was disclosed by the spies to their comrades, the local Californians took the invasion leader and his lieutenants as prisoners.

The prisoners were fed large quantities of beer. When too drunk to stand upright, they were tied to stakes and set fire. Fortunately, they had consumed a sufficient beer to enable them to easily extinguish the flames. All that burned was their outer garments. They were unharmed but humiliated as they skied home wearing only their boxer shorts.

A Final Showdown organized by the Texas Ski Council plans a counter attack. The Texas underground has nicknamed the planned invasion "Boxer Rebellion." Secret sources close to the TSC report that it will be bigger than all previous invasions. To show support for the embarrassed survivors of the last battle, the invaders plan to proudly and openly wear their boxer shorts. Lots of beer will be available to the troops to ensure preparedness to extinguish any flames that locals set.

Troops are currently being recruited by the Space City Ski Club to lead the Boxer Rebellion- Final Showdown. The invasion will take place during the week of March 17-24, 2001. A volunteer army is being recruited, with a 7 day tour of duty. An encampment is planned at the **Horizon Casino Resort**, strategically located in Nevada just the other side of the state line, mere steps from the California border and nestled in the midst of a "strip" of gambling establishments. Optional scouting excursions will include Kirkwood Ski Resort and a naval assault will transport troops aboard the Tahoe Queen to North Lake Tahoe for a beach landing and planned assault on Squaw Valley or Northstar at Tahoe resorts.

By the time of the invasion a new gondola will operate from the Stateline area, about a block from the camp at the Horizon Casino Resort to the mid mountain area. The gondola and a new mid mountain lodge are only two of the many new construction projects underway and anticipated to be completed prior to the invasion.

Patriotic Texans who want to "own the snow," and are interested in joining the Boxer Rebellion must be willing to drink beer and proudly wear their boxers.

TC: Curt Frisby 713-807-0102 cfris@worldnett.att.net
ATC: Christine March 281-491-1129 christine.a.march@usdoj.gov

Heavenly II



TSC Final Showdown

March 20 - 25, 2001
(Tuesday - Sunday)

Full: \$696
Land: \$295

Just changed jobs? Have only a few days of vacation? Then sign up for the short trip and come join us at South Lake Tahoe for the TSC's final trip of the year. Be ready to have a great time.

We will leave for Reno Tuesday, March 20, in the afternoon. We will have approximately a one hour bus ride to the hotel to join the Heavenly I long trip at Lake Tahoe Horizon Casino Resort. All of the TSC parties will be held at our hotel. We are staying in one bedroom units ≤ 2 people to a room. The casino resort features three restaurants (one is open 24 hours a day), bars, an 8 multiplex theater, the Golden Cabaret, an executive fitness center, a shopping gallery and three hot tubs.

Some facts to consider: Heavenly is located in two states \leq California and Nevada. The summit elevation at Heavenly is 10,100 feet. The base elevation is 6,540 feet in California and 7,200 feet in Nevada. There are 4,800 skiable acres with a vertical drop of 3,500 feet and a long mountain descent of 5.5 miles. The uphill capacity is 33,000 skiers per hour. There are 27 lifts, including 6 high speed lifts, (16 in California and 11 in Nevada) and a high speed 50-passenger aerial tram. The Heavenly gondola will be new for the 2000/01 season. It will depart from downtown and have you up the mountain in no time.

Try out all 82 runs or choose from 20% beginner, 45% intermediate or 35% advanced. There are also diamond bowls and double diamond runs for the brave souls! The average annual snowfall is more than 30 feet a year, and Heavenly has snowmaking capacity to cover almost 70% of the trails. Heavenly offers snowboarding on 100% of the mountain. The resort offers a snowboard park, a snowboard-cross course, and a halfpipe. Heavenly has the Perfect Turn program (ski school) and offers individual as well as group lessons.

Tired of skiing and want to explore other activities? Try fishing, the hot springs, lake cruises, sleigh rides, hot air ballooning, outlet shopping, snowmobiling, or quench your thirst at Nevada's oldest bar.

You have a choice of at least 7 dining locations on the mountain and a wide variety of restaurants in town for dinner. For entertainment, don't forget the casinos and the shows. Harvey's is next door to the Horizon, and Caesar's and Harrah's are right across the street. Of course, because this is a TSC trip, we have lots of activities planned including racing. There is an optional on-mountain picnic on Wednesday and the final awards dinner /dance party on Friday night. Be ready to party Friday night!! The good news is we do not leave until almost noon on Sunday to go home. So you have Saturday to party on, ski, or do anything else you want.

TC: Mary Simpson 713-436-0957 rrsimp@hal-pc.org
ATC: Doug Broussard 713-665-3704 dough@wt.net

Heavenly

Big Mountain



March 24 - 31, 2001
(Saturday - Saturday)

Full: \$796
Land: \$387

Big Mountain Montana will be the place in March 2001! Come join Kim and I for a holiday filled with great snow, extraordinary accommodations, lots of parties and of course the company of fun loving people.

Your vacation in Big Mountain Montana will begin with a comfortable trip to Kalispell, Montana, just 19 miles from our destination at The Grouse Mountain Lodge. We arrive well before dinner, which is fortunate as the food in Montana is very good.

Grouse Mountain lodge includes several restaurants, a bar, indoor pool and sauna, and the obligatory hot tub. Shuttles to the two ski mountains are frequent and numerous. A five-minute ride to the Big Mountain ski area.

Good food, great entertainment and many nearby pubs accompany a holiday in Montana. I personally will organize the first pub crawl beginning with the local brewery, "The Great Northern Brewing Company" which is a short distance from our hotel.

For the non-skiers Big Mountain has many other activities many at or near the hotel. We are a few miles from Glacier National Park where Moose and Elk are to be found. Snowshoe trips, snowmobiles and guided mountain tours are available.

But what about the downhill skiers? Some you remember my great passion for skiing and you can be assured that this mountain has all the great challenges that are needed. Big Mountain has 2500 feet vertical feet with 9 chairs. The area has two large bowls, which should include the steep and deep that I love.

Novice and intermediate skiers will find the miles of long groomed runs attractive. The front of Big Mountain is over 50% intermediate with many wide cruisers that many find appealing.

So why wait, this trip will fill up fast.

SKI BIG MOUNTAIN IN MARCH!!!

TC: **Jeff Eastham** 713-270-1443 gme@eastham-inc.com
ATC: **Kim Smith** 713-688-1500x226 kimsmith@bch-insurance.com

Panaroma, Canada



March 31 - April 5,
2001
(Saturday - Saturday)

Full: \$677
Includes lift tickets

Panorama - "the best in Canada" - come experience some of North America's most spectacular scenery, best vertical - over 4,000 ft and over 2,000 acres. Rated the best terrain in Canada for a "view of 1,000 peaks" set in British Columbia's spectacular Rocky Mountains.

Using the gondola, high speed quad, triple chairs, double chairs, and other lifts you should have no problem reaching some of the longest - uncrowded - wide open - exceptionally groomed - continuous cruising runs on the continent - great for all levels of skiers - (25% expert - 55% intermediate - 20% beginner).

The new snow zone offers more great terrain and more great adventure with half pipe, snowboarding, night skiing, and complimentary daily guided mountain tours. The school of skiing (ranked #1 in Canada by ski Canada magazine) offers personalized improvement programs for both skiers and snowboarders.

Also available is a 6,000 sq. ft. "outdoor year round" water park, hot springs tours, snowmobile tours, torchlight parades, and horse drawn sleigh rides.

Let's try heli-skiing - you don't have to be an expert! Heli-plex specializes in 1st time heli-ski experiences with "fat" powder skis, daily excursions with certified mountain guide, picnic lunch and 3 descents!

Panorama has reliable snow, a great winter climate, and features on-mountain accommodations with ski-in ski-out convenience, as does our condo, Horsethief Lodge. We have some great parties planned.

We begin our trip on Saturday, March 31, 2001 bright and early at 6:00 a.m. We arrive at the mountain in time to take care of rentals, see the town, eat, and get ready for a fabulous 4 days of skiing. We have direct flights from Houston to Calgary on Air Canada. We return to Houston on Thursday, April 5, 2001. Don't wait - plan to join us now!

The price of \$677.00 includes our air fare, condos, scenic bus, taxes and — lift tickets —

TC: **Christie Burke** 713-465-5644
ATC: **Joanne Fore** 713-723-4707 (h)
713-629-4146 (o)



Jessica Halter
281-364-9972


**Off the Record
Variety Band**


**SCSC Activity
Road Rally**

October 1st
Final Payment Sept. 18th


\$20.00


Contact
Juli Raley
281-873-8730
davisralej@hotmail.com





I ♥ Referrals!





Donna Kidwell, CRS, CRB
Broker Associate

P.O. Box 507204
Houston, TX 77257-0204
Office 281/242-6500
Fax 281/242-6515
pager 713/908-9808
donnaakp7@aol.com



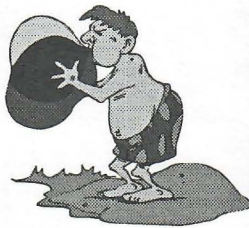
SCSC Activity

Beach Bash

October 6 - 8th
Final Payment Sept. 11th

\$110.00

Contact
Gene Soo
281-530-8559
genesoo@evl.net



shop ONLINE thru a mall!

Sporting Goods Travel
Clothing Electronics...
Over a Thousand Stores!!

www.ClickMall.BigSmart.com

View "online movie" for more info!

Call: 713-721-2853

ENHANCED LOCAL PHONE SERVICE!!

☎ Z-LINE HOME EDITION

Telecommunications services provided by
Z-Tel Communications, Inc.

www.LindaGuice.TeamOptimal.com

Now you can enjoy Power of the
Internet on your home phone PLUS 200
min. L.D. each month!! No Switch-over
fee.


Linda Guice 713-721-2853

Independent Business Rep.

- Optimal Telecom ☎—☎

C&L SPECIALTIES & SCREEN PRINTING CO.

Leona Schroeder
President
Quality Screen Printing & Embroidery
Unique Awards, Trophies, Plaques
Promotional Products
"Logo Products are Our Specialty"
10621 Harwin Suite 318 ☎ 713-541-3130
Houston, Texas 77036 Fax: 713-771-8742

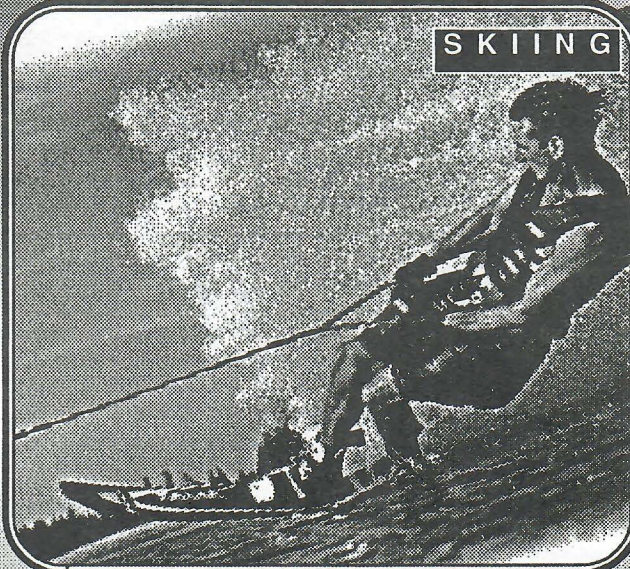

DALE L. ALLBRITTON, DDS
6910 Bellaire Blvd., Unit #4
Houston, TX 77074
TEL: (713) 776-9080
Offering COMPREHENSIVE Dental Care
INSURANCE PLANS ACCEPTED
FLEXIBLE APPOINTMENTS
PAYMENT OPTIONS AVAILABLE
EMERGENCIES HANDLED IMMEDIATELY

ANNUAL SUMMER CLEARANCE

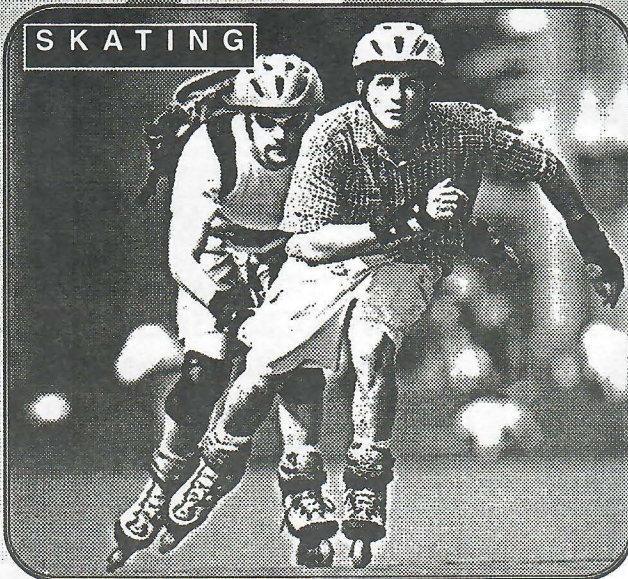
CYCLING



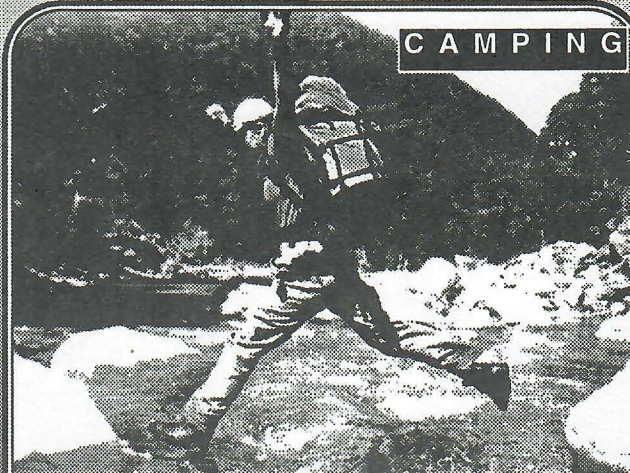
SKIING



SKATING



CAMPING



\$10.00 OFF!

Any Single Purchase of \$50 or More.

NOT VALID W/ OTHER OFFERS OR COUPONS. Exp. 9/01/00 • Diskey # 0973

HUGE SAVINGS IN EVERY DEPARTMENT!!!

• SNOW/ WATERSKI • CYCLING • IN-LINE SKATING • CAMPING

CHECK US OUT ONLINE! <http://www.sunandski.com>

SUN & SKI SPORTS
The Gear. The Advice. The Price.

The Art of Mail in Sign-Up and The Fine Print

Mail-in Sign-Up: HERE IT IS! Your chance to get an early berth on your favorite SCSC ski trip(s) for 2000-2001. The mail-in sign-up form is in this issue of the Sitzmarke, so copy it or clip it out and follow the instructions below. Then, wait for the trip TC to notify you if you are on the trip or come to the September meeting at the Holiday Inn Select to verify your registration and pick up additional information the TC will have for you.

1. Mail-in sign-up begins on **Friday, August 18** and ends on **Friday, Sept 1**. Your sign-up envelopes **must be postmarked on or between these dates**. (Registration received with postmarks outside these dates will be held until the September General Meeting. If you visit the trip table you may be added to the trip at that time, (space permitting.))
2. You must be a **current member in good standing**. In general this means you should have renewed your membership prior to August 1, 2000. Your 2000-2001 membership number should be shown on the mailing label for the August Sitzmarke. Call your VP of Membership, Mike Montgomery, if you have questions.
3. You may sign-up yourself and one other SCSC member per trip (see by-law 2.8.A. in your club directory).
4. In the registration envelope include the trip registration form and your deposit. **The deposit for the Cortina, Italy trip is \$300.00 per participant. The deposit on all other trips is \$100 per participant.** Checks should be made payable to "SCSC" and should have your **membership number and the trip name listed on the check.**
5. **Mail your registration to the Trip Coordinator** for the trip on which you wish to participate. TC's names and addresses for all trips are listed in this Sitzmarke. If your registration is mailed to anyone other than the TC, it will be returned to you and you will not be registered for the trip.
6. If the postmark is correct and the registration meets the above guidelines, **names will be added to each trip's Participant List in the order received.** If a trip's participant roster fills during mail-in sign-up, additional registrations received will be added to a Wait List in the order received. The TC will hold checks for wait-listed members until a space becomes available on the trip. Participants that are on trips, your checks will be deposited on or after August 24th.
7. These procedures apply to ALL members (except the trip's TC and ATC) and all Trip Participants are subject to SCSC Standing Rules, Policies and Procedures.
8. SCSC is not responsible for any problems with the U.S. Postal Service, including delayed delivery or lost mail.
9. Information shown on the Trip Schedule is subject to change. Contact the TC or ATC for up-to-date info.
10. Any registrations received, which do not meet the above qualifications, **may be returned to the sender.**

Land Packages: The Executive Committee has approved Land Packages on some of this year's trips. On the trips which there are **limited number of land packages available**, if all are filled, you will be given the option of being on a "Land Wait List" or switching to a full package.

Because of the restrictions noted below for land packages, **be sure** you have concrete travel arrangements made before you sign up for one of these. SCSC will not be responsible for any difficulties or extra expense you incur due to delayed or canceled flights or other transportation problems.

Rules and restrictions for Land Packages

1. The price of the land package will be the full trip price minus participant's airfare. Ground transportation will be included and available, on selected trips, to land package participants if they can meet the group at the destination airport on time. Ground transportation will not be delayed for land package participants arriving later than the group.
2. Other than the full package, **this is the only package price available**; no other combinations of lodging and/or transportation will be offered. (Note: As in the past, members may still arrange their own transportation, lodging, etc., and pay only for the parties and trip options. If so, please arrange to do this in advance, ideally by the pre-trip party.)
3. Normal cancellation and transfer policies apply -- with the added stipulation that, on or after final payment date, land package participants must be replaced from a land package wait list and full package participants must be replaced from a full package wait list in order to transfer or receive a refund.
4. It may not be possible to convert your trip from land package to full package, or vice versa. The Club may not be able to secure additional airline seats.
5. If you sign up for land package, please notify the TC of your transportation plans in advance of the trip. The TC can tell you where to meet the group or other pertinent information.

Trip Registration Form

Each envelope must contain registration form and deposit. Deposit is \$100 per participant (\$300 for Italy). Make check to "SCSC" and write trip name and membership number(s) (from address label) on check. Also, write trip name on outside of envelope. Your sign-up envelopes must be postmarked on or between **August 18, 2000** and **September 1, 2000**.

Trip Name: _____

Trip Name: _____

Trip Dates _____ to _____

Trip Dates: _____ to _____

Participant #1

Name: _____

2000-01 Membership # _____

Address: _____

City _____ Zip _____

Phone(H) _____ (W) _____

Fax _____

E-Mail _____

Participant #2

Name: _____

2000-01 Membership # _____

Address: _____

City _____ Zip _____

Phone(H) _____ (W) _____

Fax _____

E-Mail _____

Please check one:

Land package ☐

Full package ☐

Please check one:

Land package ☐

Full package ☐

I understand the following (per standing rules 5.1 - 5.4): Cancellations after trip sign-up must be in writing to the Trip Coordinator and all cancellations are subject to a \$30 per person (\$100 per person on Italy) cancellation fee. If I cancel on or after the final payment date, I may forfeit the full amount paid if I cannot be replaced on the trip. I may transfer to another trip only if there is a current open space on that trip. Transfers will not be allowed after final payment date unless a replacement can be secured. Transfer fees will be \$10 per person.

Signature(s) (Required) _____

Mail-In Sign-up Addresses

TRIP NAME	TC	ADDRESS	CITY	ST	ZIP
Keystone	Angie Westergren	5800 Woodway #105	Houston	TX	77057
Jackson Hole	Judy Katany	773 Rocky River	Houston	TX	77056
Steamboat I	J. R. Ronczy	1120 Woodland	Houston	TX	77009
Steamboat II	Marsha Lutz	11541 Village Place	Houston	TX	77077
Cortina, Italy	Sean O'Brien	2100 Bering #706	Houston	TX	77057
Whistler	Roger Sahni	P. O. Box 420222	Houston	TX	77242
Mt. Bachelor	Phillip Vice	9507 Moorcroft	Sugar Land	TX	77478
Sugarbush	Karla Darden	22328 FM 149	Montgomery	TX	77356
Vail	Jessica Halter	44 Sawmill Grove Lane	The Woodlands	TX	77380
Heavenly I	Curt Frisby	1849 Marshall #4	Houston	TX	77098
Heavenly II	Mary Simpson	1106 Woodbridge Ave	Pearland	TX	77584
Big Mountain	Jeff Eastham	9100 Southwest Frwy, Suite 139	Houston	TX	77074
Panorama	Christie Burke	12654 Rip Van Winkle	Houston	TX	77024