

newsletter

# sitzmarke

SPACE CITY SKI & ADVENTURE CLUB

VOLUME 49 NO. 10  
FEBRUARY 2014

this issue

- OFFICERS REPORTS 3
- ACTIVITIES & FEATURES 8
- TRIP CALENDAR 17
- CLUB CALENDAR 24



mardi  
gras

**Funky Uptown Umbrella Brigade**  
**Galveston Mardi Gras 8**  
**\$5 foot-long**  
**Early Membership Renewal 10**  
**New Member Spotlight**  
**Lori Aubrecht 11**



## contents



### feature articles

- 8** Funky Uptown Umbrella Brigade -  
Mardi Gras Galveston
- 10** 5 \$ foot-long & membership renewal
- 11** New Member Spotlight

### in every issue

- Launchpad **3**
- From Mission Control **4**
- Having a Blast **6**
- Countdown to Liftoff **13**
- Trip Calendar **17**
- Trip Coordinators **21**
- Club Calendar **24**
- Recent Photos **25**



### sponsors

- 12** Jackson Hole



# What's your Mardi Gras IQ?

**T**he last time I used the word 'funky', I was referring to a certain song by Wild

Cherry (click [here](#) to play). But this February, our club is going to revive the term and participate in the Galveston Mardi Gras at the Funky Uptown Umbrella Brigade in February. This should be lots of fun (but registration and a special release form are required by Jan 30<sup>th</sup>, so don't delay).

What's your Mardi Gras IQ? Take our Mardi Gras Quiz to find out:

1. **The name Mardi Gras means:**
  - a. Many thanks
  - b. Fat Tuesday
  - c. Carnival
2. **The first known Mardi Gras parade in New Orleans took place in:**
  - a. 1837
  - b. 1796

- c. 1703
3. **Floats became an integral part of the Mardi Gras celebration in:**
  - a. 1902
  - b. 1868
  - c. 1837
4. **Which set of colors and meanings is correct?**
  - a. Purple is for power, gold is for faith, and green is for justice
  - b. Purple is for faith, gold is for justice, and green is for power
  - c. Purple is for justice, gold is for power, and green is for faith
5. **True or false: Mardi Gras is a holiday in Louisiana**
  - a. True
  - b. False
6. **What are Krewes?**
  - a. The beads and trinkets given out to bystanders during the parades
  - b. A special kind of beignet made during Mardi Gras
  - c. Groups of people who march on parade during Mardi Gras

Laissez les bon temps rouler!

**Lynda Meyer**

*Editor, and VP of Marketing*

[marketing@spacecity.org](mailto:marketing@spacecity.org)

*Find quiz answers on pg 15*

newsletter **sitzmarke**

## PUBLISHER

SPACE CITY SKI & ADVENTURE CLUB

## EDITORIAL

Editor: Lynda Meyer

Email: [marketing@spacecity.org](mailto:marketing@spacecity.org)

Managing Editor: Sandy Fowler

Email: [secretary@spacecity.org](mailto:secretary@spacecity.org)

## CONTRIBUTORS

Susan Blome, Gayle Dale, Jan Ferrell, Melinda Hughes, Lynda Meyer.

## ADVERTISING & MEDIA INQUIRIES

Lynda Meyer, [marketing@spacecity.org](mailto:marketing@spacecity.org)

## SUBSCRIPTIONS

Members are emailed a link to the Sitzmarke each month. Non-members may download the newsletter from our website in the About Us/Club Documents section on [www.spacecity.org](http://www.spacecity.org), or search for Sitzmarke on [magcloud.com](http://magcloud.com). Free digital versions for tablets are also available on our digital platform, [magcloud.com](http://magcloud.com), where you may also order a printed copy of any issue and have it mailed to you for just \$.20 per page (plus shipping).

## PRINT

Color print copies may be ordered by searching for 'Sitzmarke' at HP [magcloud](http://magcloud.com), [www.magcloud.com](http://www.magcloud.com). Set up an account to purchase a copy and it will be mailed to you.

## GENERAL INQUIRIES

Space City Ski & Adventure Club  
PO Box 22567  
Houston, TX 77227  
[www.spacecity.org](http://www.spacecity.org)

## COPYRIGHT

All material appearing in SITZMARKE is copyrighted SPACE CITY SKI & ADVENTURE CLUB unless otherwise stated or it may rest with the provider of the supplied material. SITZMARKE takes all care to ensure information is correct at time of printing, but the publisher accepts no responsibility or liability for the accuracy of any information contained in the text or advertisements. Views expressed are not necessarily endorsed by the publisher or editor.

Our January General Meeting attendance was fabulous considering we had one ski trip just back from Park City and another getting ready to leave. Martha McRea, a geologist, provided a very informative presentation on geology and we now will look at the Tetons differently as we glide on the powder that covers these magnificent geological formations. Her presentation has primed us for mountain adventures, and hopefully my announcement regarding Bid

# from MISSION CONTROL

Fest has primed us for coming up with a fantastic slate of trips next year!

The Texas Ski Council BidFest is April 4<sup>th</sup> through 6<sup>th</sup> and will be held in San Antonio at the Drury Plaza. Go to the TSC website ([www.texas-ski.org](http://www.texas-ski.org)) for more information and how to sign up. This is the meeting that forms the foundation for our club trips. By attending, you can hear the

trip presentations and provide feedback to the club delegates on which trips you would like them to vote on. It's both fun and informative!

This month, the following new slate of officers for 2014-15 will be announced in the General Meeting:

PRESIDENT: Melinda Hughes

VP of ACTIVITIES: Gayle Dale

VP of TRIPS: Susan Blome

VP of MEMBERSHIP: Ali Pethick

VP of MARKETING: Lynda Meyer

TREASURER: Marti Turner

SECRETARY: Sandy Fowler

The nomination and election of officers are defined in our By-Laws (see excerpt next page). Please go to our website (About



Us/Club Documents/Rules and Policies/Bylaws) for the complete document if you wish to learn more. Join February fun - we will have a 'Mingle with Friends' program in our general meeting. Find out what is happening by attending the meeting!

Finally, I have confirmed with the HESS Club that the remainder of our general meetings this year will be held in the ballroom. We have a great working relationship with them and hope to continue future meetings in their facility.

Have a great ski season!

**Melinda Hughes**

*President*

[president@spacecity.org](mailto:president@spacecity.org)

#### ARTICLE 4.0: NOMINATION AND ELECTION OF OFFICERS

**4.1 ELECTION.** There shall be an election of officers held at the Annual Meeting in March. Election shall be by written ballot unless there is only one nominee for each office. Written absentee votes shall be allowed for members unable to attend the Annual Meeting if received at the Club post office box no later than midnight of the Saturday prior to the Annual Meeting date, or if received in such other manner as approved by the Board of Directors. The elected officers shall take office on the first day of the club fiscal year.

**4.2 DEFINITION.** The elective offices shall be those of President, Vice President-Activities, Vice President-Trips, Vice President-Membership, Vice President-Publications, Secretary, and Treasurer. (Amended 3-10-2008)

**4.3 ELIGIBILITY.** The only persons eligible to hold office shall be members in good standing as of the date of the Annual Meeting, and who were active members in the preceding membership year.  
A. President. Nominee for President shall have been, or shall currently be, a club officer or an Executive Committee Director of Space City Ski Club who has served a minimum six months term of office at time of nomination as President. (Amended 2-12-07)

#### Interested in membership?

Join online, or contact our VP of Membership, Jan Ferrell, for more information. Family memberships are a great way to get on the slopes with your children or grandchildren.

**Jan Ferrell**

*VP of Membership*

Have you forgotten your user name or password?  
Jan can help.

E-mail her at  
[membership@spacecity.org](mailto:membership@spacecity.org)

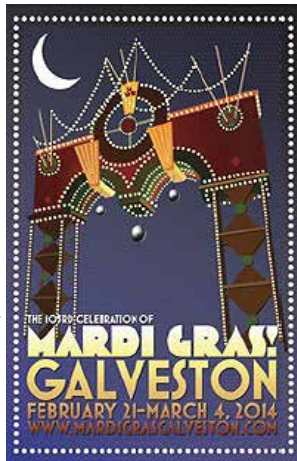


# having a BLAST



Over 20 members showed off their expertise (or had fun trying to) on the ice rather than the slopes last month. The 30 minute group lesson was an added plus! Thanks to Ali and Fred Pethick for all their hard work coordinating this activity. Afterwards we shared laughs about the afternoon over drinks and pizza at the California Pizza Kitchen. Cindy Moore was especially happy since California Pizza Kitchen donated a portion of our monies spent to the Texas Ski Council Youth Foundation. Kudos to California Pizza Kitchen at Memorial City Mall.

Are you planning on attending the Galveston Mardi Gras festivities this year? Start it off by joining your fellow SCSC friends at the 4<sup>th</sup> Annual Funky Uptown Umbrella Brigade. We have put a team together and



will be marching through the Galveston Downtown Entertainment District while twirling our decorated umbrellas on February 21st. More detailed information is available on our website. There is no fee associated with this activity. Contacts for this event are Gayle Dale, Marianne Pearce or Ellen Eastham.

Our February Happy Hour will be February 27th at Hotel Granduca located in Uptown Park.



Thursday night is their special happy hour in the Bar Malatesta. Named "the aperitivo", it's a combination of cocktail and small bites (all you can eat) Italian buffet, included in the cost of your cocktail. It's recommended you get there early as the bar fills up quickly on Thursdays.

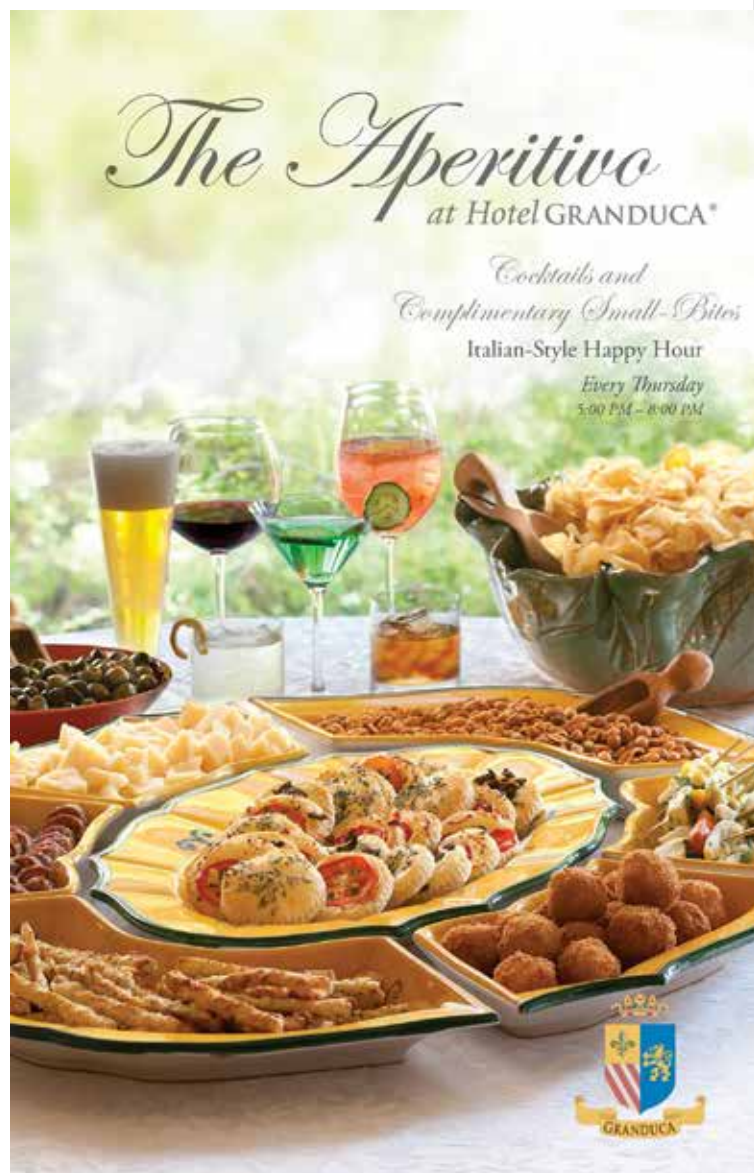
We are gathering information on some fun activities such as the rodeo, go karts and top golf in the next

few months. Wishing you safe travels, lots of snow (if you are skiing) and HAPPY VALENTINES DAY!!

## Gayle Dale

VP of Activities

[activities@spacecity.org](mailto:activities@spacecity.org)



# FEBRUARY HAPPY HOUR



Choose a spot in the clubby and intimate Old World living room, or score a coveted seat al fresco amongst the gardens and courtyards of the hotel's Veranda. Enjoy live music while catching up with ski club friends.

*'We are absolutely thrilled to have introduced the true 'Aperitivo' format. It is a new concept for Houston, a combination of cocktail and small bites buffet, an all-you-can-eat variety of Italian goodies, all included in the cost of one drink.'* – Giorgio Borlenghi, Hotel Granduca Owner

**WHAT:** FEBUARY HAPPY HOUR

**WHERE:** Hotel Granduca  
Bar Malatesta  
1080 Uptown Park Blvd

**MAP:** <http://binged.it/1mn8JHQ>

**WHEN:** Thursday, 2/27  
5:30pm - 9pm



# funky uptown umbrella brigade MARDI GRAS GALVESTON

Funky Uptown  
Umbrella Brigade  
Mardi Gras Galveston

Friday, February 21  
6:30pm

WHERE: Corner of 21st and  
Mechanic in Galveston for a  
preparty at the DJ Stage. Must  
enter through the designated  
umbrella gate with your decorated  
umbrella and be in costume.

MAP: <https://goo.gl/maps/o2t95>

WHEN: Friday, February 21<sup>st</sup>  
Be there by 6:30pm for pre-party.  
Parade procession starts at 8pm

FEE: Free - just bring an  
awesome umbrella for Mardi Gras

ACTIVITY COORDINATORS:

[Gayle Dale](#)

[Ellen Eastham](#)

[Marianne Pearce](#) (Team Captain)

281-558-8678



**P**lease join our SCSC team in twirling your decorated umbrella through the streets of the Galveston Downtown Entertainment District while dancing to the Hokey Pokey. The event is free but you must be in costume with a decorated umbrella. Let your imagination run wild!

The Jazz Funeral dates back to the early 1800's. The families of the deceased were the first line. The jazz band and the 'Second line' (non-family members) would come to pay their respect. Trumpets call would rally the crowd to celebrate life and help release his or her soul.

**NOTE:** You must sign a special release form prior to attending the event. Contact [Team Captain Marianne Pearce](#) and she can email you the form or [click here](#) to download it. Marianne will need your signed release in hand no later than January 30th!





Once in your lifetime

**SOUTH AFRICA**

SEPTEMBER 19-30, 2014

TC: [MELODY@SPACECITY.ORG](mailto:MELODY@SPACECITY.ORG)

# 5 \$ foot-long and WISE

What does \$5 get you?

Well, a \$5 foot long at Subway AND a \$5 discount on your renewal fee! Then you can buy that foot long at Subway! Renew your membership before 5/31/14 and you will qualify for that discount.

Our club is the largest ski and adventure club in the state and it is because of you. Some of the trips for the 2014-2015 season will be decided this April at the TSC BidFest meeting in San Antonio. As a member, you will be privy to just some of places we will visit just by continuing to receiving our newsletter and emails when you renew. So, renew soon and start thinking about the upcoming season.

Happy trails to you until we meet again—oops. I think I just stole that quote.

**Jan Ferrell**

*VP of Membership*

[membership@spacecity.org](mailto:membership@spacecity.org)

Renew your  
membership  
starting  
February 1<sup>st</sup>,  
and save \$5.

Savings end May 31<sup>st</sup>.



# new member SPOTLIGHT

# Lori Aubrecht

## SCSC Interview With New Member—Lori Aubrecht

**Lori, Welcome to the club! How did you find out about us?**

Through a fellow ski club member. **You just ran the SCSC Gala and I can tell you that from a participant's standpoint it was terrific. Running an activity can be more work than people realize. What was the experience like for you?**

Fortunately I had a lot of great help from Gayle Dale and Marti Turner. It was nice that everyone worked so well together. We collaborated on everything—menu, location, etc. I would definitely recommend volunteering to handle an event. It is a great way to engage with the group, meet other people, and learn more about our new and old members.

**Now, how about you—are you a native born Texan?**

No, I was born and raised in New Jersey but I've been here over 30 years. A job brought me to Houston and I also have a sister living here.

**What do you do outside of the club?**

I sell software to schools and travel a lot - mostly to trade shows. I also teach Zumba at Lifetime Fitness.

**How did you get into that?**

I took a couple of classes and loved it. I have a background in dance and found Zumba to be a great marriage of exercise and dance.

**How long have you been skiing?**

I skied many years ago and just recently got back into it. I still consider myself a novice. I've been to Breckenridge and love that area. I've also been to

Copper Mountain, A-Basin, and Vail. Winter Park is next on my list. I have to work around school schedules for my vacation time.

**Where would you like to travel, whether it would be to ski or not?** I love Europe and want to visit Greece.

**What's your favorite thing to do in Houston?**

I enjoy the parks, museums, the theatre and the rodeo.

**Last but not least, what is something you'd like for people to know about you?**

I love the beach and I hope the club will schedule some beach trips in the summer, when schools are out.

**Thanks for becoming a member, Lori. See you at an event or meeting soon!**

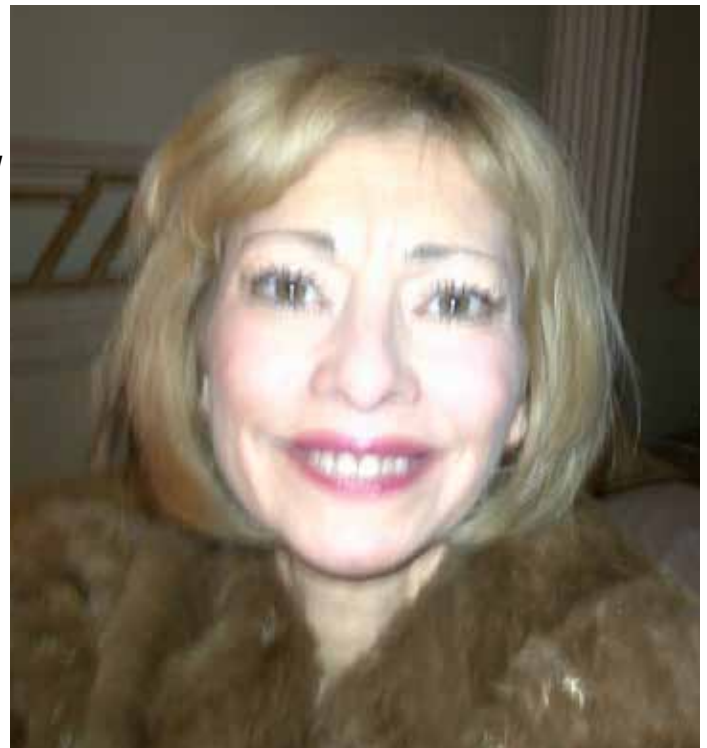
**Member  
interviews by  
Jan Ferrell**

*VP of*

*Membership*

[membership@](mailto:membership@spacecity.org)

[spacecity.org](http://spacecity.org)





**JACKSON  
HOLE**.COM



FOLLOW US!



**OUR GUESTS RANKED US NUMBER ONE  
OUR COMMUNITY MADE US WHO WE ARE.**





The busy ski season is upon us as three trips - Vail-Dec, Park City, & Garmisch - have already returned. With several trips - Jackson Hole, Vail-Feb, Mammoth, Keystone, Breckenridge, Winter Park & S. Africa - still to leave, it's a good time to remember that travel can be stressful with airport security, delayed or cancelled flights, etc. I find it's helpful to pack a lot of patience and an attitude of adventure when traveling, knowing the destination offers a wonderful opportunity to have fun and create new memories with old and new friends.



One program that you may or may not be aware of that helps with airport security is the Global Entry Program. One purpose of this program is to allow for quicker re-entry into the U.S. after international travel; however, it also helps to expedite travel thru US domestic airports.

I signed up for this program last summer and have been pleasantly surprised at how it makes even

# countdown to LIFTOFF

my domestic travel easier. I did have to go through a face-to-face interview and have my picture and fingerprints taken. Fortunately Houston offers two locations for the interview - either Bush Airport or City Hall downtown. You can even make your interview appointment on-line.

After you are approved, once you arrive at the airport for check-in, just show your passport or your Global Entry Card when checking your bags. You can also update your airline Frequent Flyer profiles with your



Global Entry Pass ID. Your boarding pass will indicate you can go through the expedited security screening.

Leaving Houston, you encounter a shorter line through security and do not have to remove shoes, laptops, or liquids. At smaller airports, you may have to remove laptops and liquids, but not your shoes. This was the process I encountered on my recent flight from Dallas Love field to Houston.

# countdown to LIFTOFF (continued)

Cost is \$100 and is good for 5 years or with an AMEX card it should be free. Web site is: <https://goes-app.cbp.dhs.gov/>

As you know, our team of TCs and ATCs has worked throughout the last year coordinating our club's fantastic ski and non-ski trips. They are a great group of volunteers and we appreciate their hard work!! Please let them know how much you enjoy the trip you went on. We will be looking for trip leaders for next season in just a few weeks. When you are a trip leader, it is a great way to meet the members of the club and get involved. We love our volunteers!

Come to the next General Meeting on February 10th to meet the TCs and ATCs and find out other information they can share about your trip or any trip you are interested, including options and the parties planned for your trip! As I write this, we still have space available on Mammoth, Keystone and South Africa, but the trip status can change quickly so please check with the TC for the latest trip information. Trips that are full will accept wait/stand-by list registrations, and those are the first members contacted if a participant cancels and

space opens up.



Also, consider going to the Texas Ski Council (TSC) BidFest at the Drury Hotel on the River Walk in San Antonio April 4-6. More details will be available soon and this is a great way to see how the TSC

trips are determined. As an SCSC member, we value your contributions as we decide next season's trips; however, since the trips are decided by the council members, SCSC first choices are not always awarded. I find it to be a very interesting process and after the TSC trips are decided we will begin to decide on club trips.

In the meantime, hope to see you on the slopes!

**Susan Blome**

*VP of Trips*

[trips@spacecity.org](mailto:trips@spacecity.org)



## ANSWERS TO MARDI GRAS QUIZ FROM PG 3:

1. b – Fat Tuesday. The name Mardi Gras means Fat Tuesday, a day of feasting before the start of Lent on Ash Wednesday. This day is also known as Shrove Tuesday.
2. a – 1837. The first known Mardi Gras parade in New Orleans took place in 1837, though prior to that it was celebrated in Mobile, Alabama in 1703.
3. c – Floats became part of the New Orleans celebration in 1837 and since then have become an integral aspect of festivities.
4. c – The official colors of Mardi Gras have meanings. Purple is for justice, gold is for power and green is for faith. These were chosen by the Grand Duke of Russia in 1857.
5. a – True. Mardi Gras became a legal holiday in Louisiana in 1875.
6. c – Krewes are parade groups, which started as private social clubs. The oldest of these is Comus which was founded in 1857.



## TIME IS RUNNING OUT...

If you haven't decided on your next ski trip, time is running out. Mammoth and Keystone still have space available and we were able to reduce the full package price on Mammoth with cheaper air direct into Reno. Plus, don't forget our South Africa trip next September, which currently has 3 spots open, and trips that are full will accept wait/stand-by list registrations which are the first members contacted if a participant cancels and space opens up. The trip status can change quickly so please check with the TC for the latest trip information.

# LET **WINTER** BRING OUT THE PHOTOGRAPHER IN YOU



Got a photo or video you want to share? Post it online (YouTube, Flickr, Picasa, etc.) and email [marketing@spacecity.org](mailto:marketing@spacecity.org) the link to it.

Find out more at [www.spacecity.org/photocontest](http://www.spacecity.org/photocontest)

**SPACE CITY**  
SKI & ADVENTURE CLUB

# trip CALENDAR OCTOBER

3-7 CALIFORNIA WINE COUNTRY

## DECEMBER

7-11 VAIL SHORT

7-14 VAIL LONG

## JANUARY

4-11 PARK CITY

24-31 GARMISCH-PARTENKIRCHEN

## FEBRUARY

8-15 JACKSON HOLE

22-MAR 1 VAIL

## MARCH

1-8 MAMMOTH

8-15 KEYSTONE<sup>(1)</sup>

12-16 BRECKENRIDGE SHORT

15-22 WINTER PARK<sup>(2)</sup>

## APRIL

## MAY

## JUNE

## JULY

## AUGUST

## SEPTEMBER

19-30 SOUTH AFRICA

(1) Spring Break & Family Optional Trip # 1

(2) Spring Break & Family Optional Trip # 2



Destination	Dates	Prices Full/Land Only (before cash discount)	Final Pay- ment Date	Trip Coordinator	Assistant Trip Coordinator
<b>2013</b>					
California Wine Country	Oct 3-7	\$773 - land & cash only	8/30/13	Linda Kuper <a href="mailto:linda@spacecity.org">linda@spacecity.org</a> 713-478-9094	
Vail, CO - Short	Dec 7-11	\$756 - land only	10/14/13	Ann Rogers <a href="mailto:ann@spacecity.org">ann@spacecity.org</a>	
Vail, CO - Long	Dec 7-14	\$1,229 - land only	10/14/13	281-703-0454	
<b>2014</b>					
Park City, UT <i>TSC Winter Traditional</i>	Jan 4-11	\$1,310/\$851	11/11/13	Betty Donellan <a href="mailto:betty@spacecity.org">betty@spacecity.org</a> 310-702-2090	Leslie Hajdo <a href="mailto:leslieh@spacecity.org">leslieh@spacecity.org</a> 281-419-6237
Garmisch-Partenkirchen, Bavaria, Germany <i>TSC Winter Expedition</i>	Jan 24-31	\$2,148/\$1,067	11/11/13	Barbara Brescian <a href="mailto:barbara@spacecity.org">barbara@spacecity.org</a> 713-516-5322	Sarah Granberry <a href="mailto:sarah@spacecity.org">sarah@spacecity.org</a> 713-392-5255
Jackson Hole, WY <i>TSC Winter Snowdown</i>	Feb 8-15	\$1,327/\$753	12/2/13	Anne Thomas <a href="mailto:anne@spacecity.org">anne@spacecity.org</a> 713-589-3660	Steve Ying <a href="mailto:steve@spacecity.org">steve@spacecity.org</a> 281-433-4122
Vail, CO	Feb 22-Mar 1	\$1,204/\$860	11/24/13	Jim Hodges <a href="mailto:jim@spacecity.org">jim@spacecity.org</a> 281-829-6155	Arlen Isham <a href="mailto:arlen@spacecity.org">arlen@spacecity.org</a> 713-560-0187
Mammoth, CA	Mar 1-8	\$1,385/\$901	1/13/14	Sandra McCunis <a href="mailto:sandra@spacecity.org">sandra@spacecity.org</a> 281-463-7717	
Keystone, CO <sup>(1)</sup> <i>TSC Final Showdown</i>	Mar 8-15	\$1,135/\$709	11/11/13	John Burk <a href="mailto:john@spacecity.org">john@spacecity.org</a> 281-468-1912	
Breckenridge, CO - Short	Mar 12-16	\$578 - land only	1/13/14	Patti Finch <a href="mailto:patti@spacecity.org">patti@spacecity.org</a> 936-520-1486	
Winter Park, CO <sup>(2)</sup>	Mar 15-22	\$859/\$520	12/9/13	Cindy Moore <a href="mailto:cindy@spacecity.org">cindy@spacecity.org</a> 713-628-7613	
South Africa <i>TSC Summer Expedition</i>	Sept 19-30	\$5,130/\$2,938	TBD	Melody Bohlmann <a href="mailto:melody@spacecity.org">melody@spacecity.org</a> 210-410-7302	

(1) Spring Break &amp; Family Optional Trip # 1

(2) Spring Break &amp; Family Optional Trip # 2

Information shown on this Trip Schedule is subject to change. Contact the Trip Coordinator (TC) or Assistant Trip Coordinator (ATC) for the most up-to-date information.

PRICING: FULL packages include air, all transfers, and per person lodging based on double-occupancy. LAND packages do not include air. Ground transportation will be included and available on selected trips for land package participants if they can meet the group at the destination airport in time to meet the group. Ground transportation will not be delayed for land package participants arriving later than the group. Check with your Trip Coordinator for ground transportation arrangements if you are choosing a land package.

Published prices do not include baggage fees, equipment rentals or lift tickets, and are subject to change. All trip deposits can be made with PayPal; however, final payment must be made by check to receive the discounted rate. Trips frequently have optional activities, such as a group dinner, or offer pre- and post-trip segments that are not reflected in the price published above. The TC is your source of information as to what is included in the package price and the cost of available options. Each trip has a different final refund date -- that is the last date you can withdraw from the trip without a penalty. Refer to the club's Standing Rules 5.1-5.4 for the governing policies on trips, cancellations, refunds, etc.

DEPOSITS: All trips require a per person deposit to make a reservation.

# TRIP COORDINATORS FOR 2013-14

## CALIFORNIA WINE COUNTRY

OCTOBER 3-7, 2013

Linda Kuper, TC

[linda@spacecity.org](mailto:linda@spacecity.org)

713-478-9094

- 2 custom tailored, guided wine excursions
- Harvest season in Sonoma/Napa areas
- Quaint town of Healdsburg (reminiscent of Tuscany in the fall)
- Complimentary wine tastings at local wineries
- Fall is a beautiful time to visit Northern California – experience fall color & crisp weather

**SORRY, IT'S OVER** ex-



Linda Kuper

## VAIL CO

DEC 7-14 or 7-11

Ann Rogers, TC

[ann@spacecity.org](mailto:ann@spacecity.org)

281-703-0454

- Short & long options available
- Largest ski resort in the United States
- 5,289 acres of skiing
- Famous Back Bowls

**SORRY, IT'S OVER**



Ann Rogers

## PARK CITY, UT - TSC TRADITIONAL

JAN 4-11

Betty Donellan, TC

[betty@spacecity.org](mailto:betty@spacecity.org)

281-374-2172 / 310-702-2090

Leslie Hajdo, ATC

[leslieh@spacecity.org](mailto:leslieh@spacecity.org)

281-419-6237

- World's Best Snow
- Three mountains to ski – Park City, Deer Valley, The Canyons
- Terrain for all abilities
- Park City is a charming mining town to explore

**SORRY, IT'S OVER**



Betty Donellan



Leslie Hajdo

# and why you should choose their TRIP

## GARMISCH-PARTENKIRCHEN, BAVARIA, GERMANY - TSC WINTER EXPEDITION

JANUARY 24-31

Barbara Brescian

barbara@spacecity.org

713-516-5322

Sarah Granbery

sarah@spacecity.org

713-392-5255

- Savor the tastes, sounds and skiing of a Bavarian mountain resort town
- Ski the panoramic roof top of Germany
- Terrain for all abilities
- Step back in time to tour the 'real Disney castle'
- Historical sites, interesting excursions, art and culture

**SORRY, IT'S OVER**



Barbara Brescian and Sarah Granbery

## JACKSON HOLE, WY - TSC WINTER SHOWDOWN

FEB 8-15

Anne Thomas

anne@spacecity.org

713-589-3660

Steve Ying

steve@spacecity.org

281-433-4122

- SCSC/TSC trips are packed with activities on and off the slopes
- Offers 40% Blue Trails and ski terrain for all abilities
- Mountainside Lodging- No long bus rides!
- Elevation – base 6,311' is good for sleeping; summit -10,450' is great for skiing.
- Avoid Houston restaurant crowds by celebrating Valentine's Day in a skier's paradise

**WAIT-LIST ONLY**



Steve Ying and Anne Thomas



# TRIP COORDINATORS FOR 2013-14

## VAIL, CO

FEB 22-MAR 1

Jim Hodges  
jim@spacecity.org  
281-829-6155

Arlen Isham  
arlen@spacecity.org  
713-560-0187



Jim Hodges and Arlen Isham

- Largest, single mountain ski area in North America
- Vail International Condos located near Lionshead Village; walk or shuttle to gondola lift
- Dining and nightlife rated among the best in ski country
- Non-stop flight to Denver followed by a short 2 hr bus ride
- Skiing for everyone – wide open groomed runs, famous back bowls

**WAIT-LIST ONLY**

## MAMMOTH, CA

MARCH 1-8

Sandra McCunis  
sandra@spacecity.org  
281-463-7717

- Mammoth Mountain has the most open terrain in the U.S.
- Average of 400 inches of snow and 300 days of sunshine
- Lodging in premier ski-in, ski-out condominium hotel
- The Village at Mammoth with shopping, dining and nightlife
- Overnight stay on Friday in Reno hotel with great entertainment included



Sandra McCunis

## KEYSTONE, CO - TSC FINAL SHOWDOWN, FAMILY TRIP

MARCH 8-15

John Burk  
john@spacecity.org  
281-468-1912

- Spring [Break] Skiing / Family Optional
- 3 Mountains at Keystone plus Breckenridge & Arapahoe Basin
- One scheduled day at Vail with transportation included
- Texas Ski Council (TSC) parties, activities and discounts
- Terrain for all abilities



John Burk

# and why you should choose their TRIP

## BRECKENRIDGE SHORT

MARCH 12-16

Patti Finch

patti@spacecity.org

936-520-1486

**WAIT-LIST ONLY**

- Patti's favorite destination !
- Over 2,300 acres for skiing, including 800 acres of bowl skiing
- Breckenridge is an authentic mining town with lots of character
- Easy access from the Denver airport
- Terrific 'learn to ski' area



Patti Finch

## WINTER PARK, CO

MARCH 15-22

Cindy Moore

cindy@spacecity.org

713-628-7613

**WAIT-LIST ONLY**

- Coincides with Houston & Spring Branch ISD, several college spring breaks, and the trip is geared for children of all ages
- Seven nights of value-priced lodging are offered
- Lift tickets are inexpensive and lesson packages for all ages
- Winter Park offers terrain for all abilities, with lots of gentle slopes for beginners



Cindy Moore

## SOUTH AFRICA - TSC SUMMER EXPEDITION

SEPTEMBER 19-30, 2014

Melody Bohlmann

melody@spacecity.org

210-410-7302

- 'Bucket List' South Africa destination with a 3 night pre-trip option available for Victoria Falls and a post-trip to Kruger Park.
- This trip has something for everyone – the adventurer, nature lover, animal lover, wine taster, historian, photographer, and the shopper.



Melody Bohlmann

# our LEADERSHIP 2013-14

PRESIDENT melinda HUGHES  
VP of ACTIVITIES gayle DALE  
VP of TRIPS susan BLOME  
VP of MEMBERSHIP jan FERRELL  
VP of MARKETING lynda MEYER  
TREASURER marti TURNER  
SECRETARY sandy FOWLER  
DIRECTOR OF TRIPS sean O'BRIEN  
AUDITOR keith KIRKMAN

[president@spacecity.org](mailto:president@spacecity.org)  
[activities@spacecity.org](mailto:activities@spacecity.org)  
[trips@spacecity.org](mailto:trips@spacecity.org)  
[membership@spacecity.org](mailto:membership@spacecity.org)  
[marketing@spacecity.org](mailto:marketing@spacecity.org)  
[treasurer@spacecity.org](mailto:treasurer@spacecity.org)  
[secretary@spacecity.org](mailto:secretary@spacecity.org)  
[sean@spacecity.org](mailto:sean@spacecity.org)  
[auditor@spacecity.org](mailto:auditor@spacecity.org)

## OUR BOARD MEMBERS

CHAIRPERSON sandra MCCUNIS  
ross BAKER  
bill BOMBERGER  
sarah GRANBERY  
jim HODGES  
cindy MOORE  
sean O'BRIEN  
ann ROGERS

[sandra@spacecity.org](mailto:sandra@spacecity.org)  
[ross@spacecity.org](mailto:ross@spacecity.org)  
[bill@spacecity.org](mailto:bill@spacecity.org)  
[sarah@spacecity.org](mailto:sarah@spacecity.org)  
[jim@spacecity.org](mailto:jim@spacecity.org)  
[cindy@spacecity.org](mailto:cindy@spacecity.org)  
[sean@spacecity.org](mailto:sean@spacecity.org)  
[ann@spacecity.org](mailto:ann@spacecity.org)



Visit our [website](#) for the most up-to-date information.

## FEBRUARY

**10**

General Meeting

**8-15**

Jackson Hole Ski Trip

**21**

Funky Uptown  
Umbrella Brigade

**22-1**

Vail Ski Trip

**27**

Happy Hour



## MARCH

**1-8**

Mammoth Ski Trip

**10**

General Meeting

**8-15**

Keystone Ski Trip

**12-16**

Breckenridge Ski Trip

**15-22**

Winter Park Ski Trip

**27**

Happy Hour

# club CALENDAR

## APRIL

**4-6**

TSC BidFest - San Antonio

**14**

General Meeting

**24**

Happy Hour

# recent PHOTOS January General Meeting



# recent PHOTOS January General Meeting

